

## IER3 RABBIT PAB

货号: S221824

产品全名: IER3 兔多抗

基因符号: DIF2; IEX1; PRG1; DIF-2; GLY96; IEX-1; IEX-1L

**UNIPROT ID:** P46695 (Gene Accession - NP\_003888 )

背景: This gene functions in the protection of cells from Fas- or tumor necrosis factor type alpha-induced apoptosis. Partially degraded and unspliced transcripts are found after virus infection in vitro, but these transcripts are not found in vivo and do not generate a valid protein.

抗原: Synthetic peptide of human IER3

经过测试的应用: ELISA, IHC

推荐稀释比: IHC: 25-100; ELISA: 5000-10000

种属反应性: Rabbit

克隆性: Rabbit Polyclonal

亚型: Immunogen-specific rabbit IgG

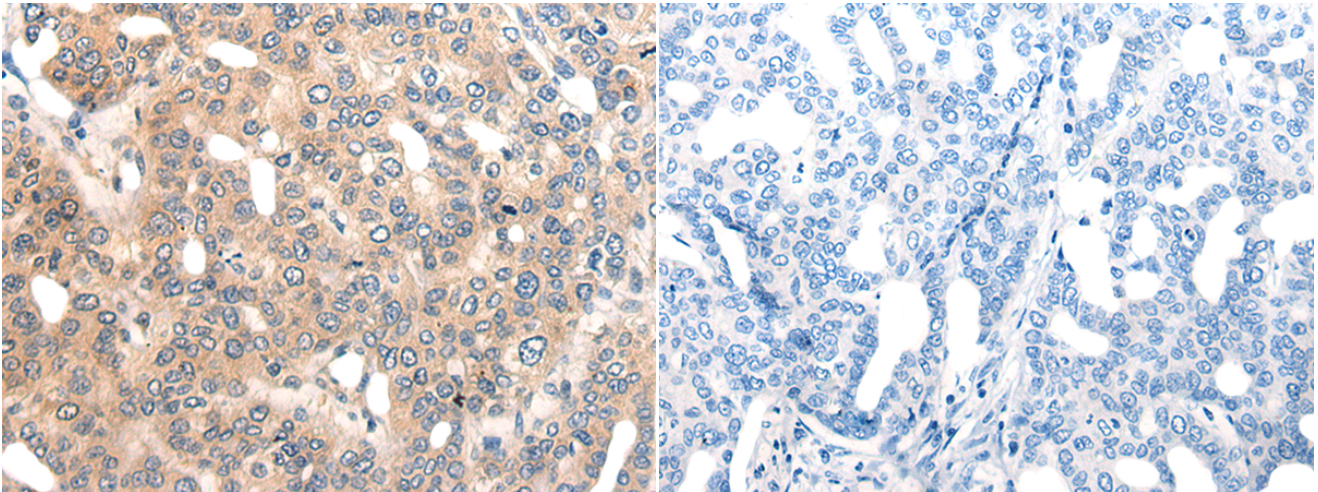
纯化: Antigen affinity purification

种属反应性: Human, Mouse

成分: PBS (without Mg<sup>2+</sup> and Ca<sup>2+</sup>), pH 7.4, 150 mM NaCl, 0.05% Sodium Azide and 40% glycerol

研究领域: Cancer, Stem Cells

储存和运输: Store at -20°C. Avoid repeated freezing and thawing



Immunohistochemistry analysis of paraffin embedded Human liver cancer tissue using 221824 (IER3 Antibody) at a dilution of 1/35 (Cytoplasm).

In comparison with the IHC on the left, the same paraffin-embedded Human liver cancer tissue is first treated with the synthetic peptide and then with 221824 (Anti-IER3 Antibody) at dilution 1/35.