

IDO2 RABBIT PAB

货号: S218122

产品全名: IDO2 兔多抗

基因符号: INDOL1

UNIPROT ID: Q6ZQW0 (Gene Accession - BC113496)

背景: Along with the enzymes encoded by the INDO (MIM 147435) and TDO2 (MIM 191070) genes, the enzyme encoded by the INDOL1 gene metabolizes tryptophan in the kynurenine pathway.

抗原: Fusion protein of human IDO2

经过测试的应用: ELISA, WB, IHC

推荐稀释比: IHC: 50-200;WB: 500-2000;ELISA: 5000-10000

种属反应性: Rabbit

克隆性: Rabbit Polyclonal

亚型: Immunogen-specific rabbit IgG

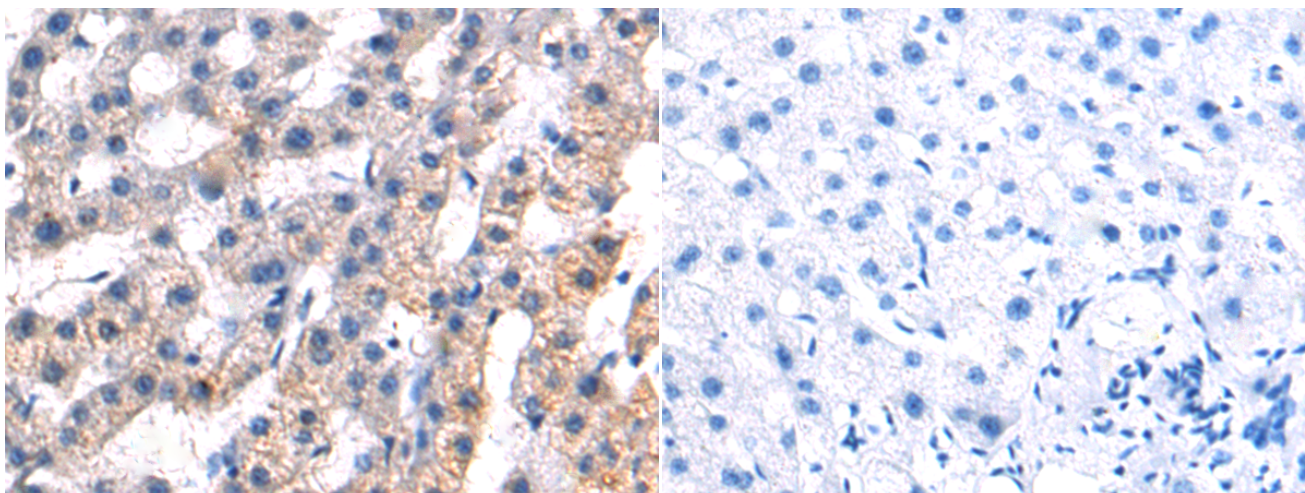
纯化: Antigen affinity purification

种属反应性: Human, Mouse

成分: PBS (without Mg²⁺ and Ca²⁺), pH 7.4, 150 mM NaCl, 0.05% Sodium Azide and 40% glycerol

研究领域: Metabolism

储存和运输: Store at -20°C. Avoid repeated freezing and thawing



Immunohistochemistry analysis of paraffin embedded Human liver cancer tissue using 218122(IDO2 Antibody) at a dilution of 1/90(Cytoplasm).

In comparison with the IHC on the left, the same paraffin-embedded Human liver cancer tissue is first treated with the fusion protein and then with 218122(Anti-IDO2 Antibody) at dilution 1/90.



Gel: 8%SDS-PAGE, Lysate: 40 µg;

Lane: Mouse kidney tissue lysate;

Primary antibody: 218122(IDO2 Antibody) at dilution 1/1350;

Secondary antibody: HRP-conjugated Goat anti rabbit IgG at 1/5000 dilution;

Exposure time: 1 minute