

## IDI2 RABBIT PAB

货号: S219436

产品全名: IDI2 兔多抗

基因符号: IPP12

**UNIPROT ID:** Q9BXS1 (Gene Accession - BC017778 )

**背景:** The protein encoded by this gene catalyzes the conversion of isopentenyl diphosphate to dimethylallyl diphosphate, which is a precursor for the synthesis of cholesterol and other isoprenoids. This gene, which is a product of an ancestral gene duplication event, encodes a protein that may be involved in the aggregation of alpha-synuclein in the cerebral cortex of patients with Lewy body disease. In addition, segmental copy number gains in this locus have been associated with sporadic amyotrophic lateral sclerosis.

**抗原:** Fusion protein of human IDI2

**经过测试的应用:** ELISA, WB, IHC

**推荐稀释比:** IHC: 150-300;WB: 1000-5000;ELISA: 5000-10000

**种属反应性:** Rabbit

**克隆性:** Rabbit Polyclonal

**亚型:** Immunogen-specific rabbit IgG

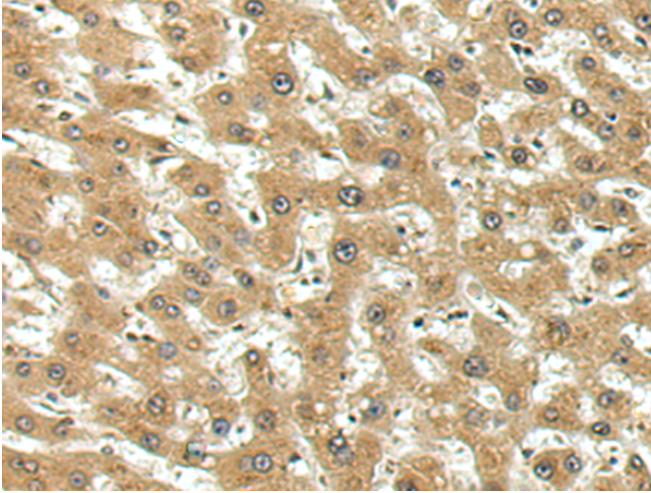
**纯化:** Antigen affinity purification

**种属反应性:** Human

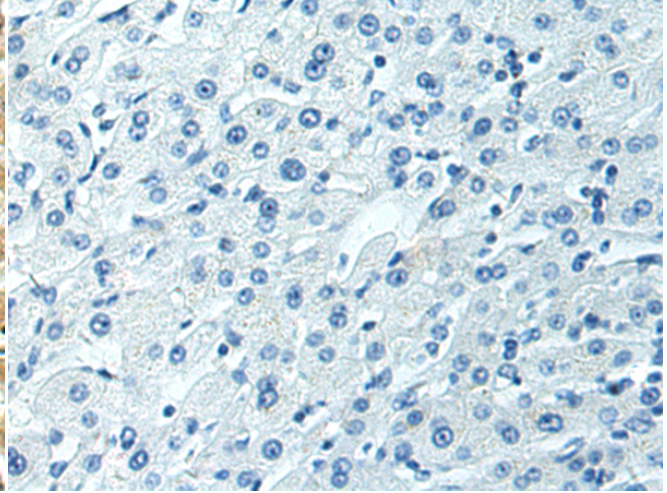
**成分:** PBS (without Mg<sup>2+</sup> and Ca<sup>2+</sup>), pH 7.4, 150 mM NaCl, 0.05% Sodium Azide and 40% glycerol

**研究领域:** Metabolism, Cancer, Cardiovascular

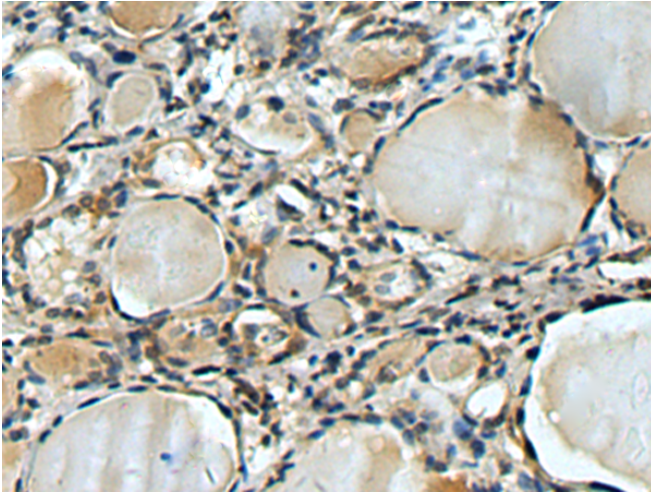
**储存和运输:** Store at -20°C. Avoid repeated freezing and thawing



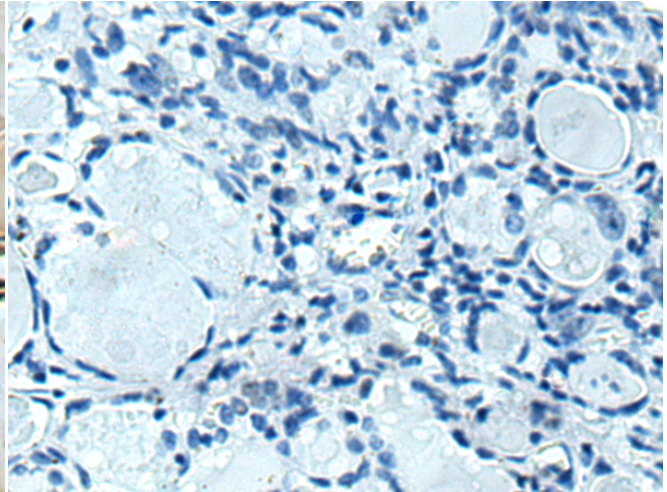
Immunohistochemistry analysis of paraffin embedded Human liver cancer tissue using 219436 (IDI2 Antibody) at a dilution of 1/130 (Cytoplasm).



In comparison with the IHC on the left, the same paraffin-embedded Human liver cancer tissue is first treated with the fusion protein and then with 219436 (Anti-IDI2 Antibody) at dilution 1/130.

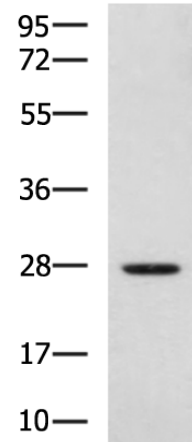


The image on the left is immunohistochemistry of paraffin-embedded Human thyroid cancer tissue using 219436 (Anti-IDI2 Antibody) at a dilution of 1/130.



In comparison with the IHC on the left, the same paraffin-embedded Human thyroid cancer tissue is first treated with fusion protein and then with D226985 (Anti-IDI2 Antibody) at dilution 1/130.

kDa



Gel: 8% SDS-PAGE, Lysate: 40 µg;  
Lane: HepG2 cell lysate;  
Primary antibody: 219436 (IDI2 Antibody) at dilution 1/1000;  
Secondary antibody: HRP-conjugated Goat anti rabbit IgG at 1/5000 dilution;  
Exposure time: 30 seconds



# Product Description

Pioneering GTPase and Oncogene Product Development since 2010

---