

IDH2 RABBIT MAB

货号: N262383

产品全名: IDH2 兔单克隆抗体

基因符号 IDH; IDP; IDHM; IDPM; ICD-M; D2HGA2; mNADP-IDH

UNIPROT ID: P48735

背景: Plays a role in intermediary metabolism and energy production. It may tightly associate or interact with the pyruvate dehydrogenase complex.

抗原: A synthetic peptide of human IDH2

经过测试的应用: WB,IHC-P

推荐稀释比: WB: 1/500-1/1000 IHC: 1/50-1/100

种属反应性: Rabbit

克隆性: Rabbit Monoclonal

克隆编号: R01-7E4

分子量: Calculated MW: 51 kDa; Observed MW: 43 kDa

亚型: IgG

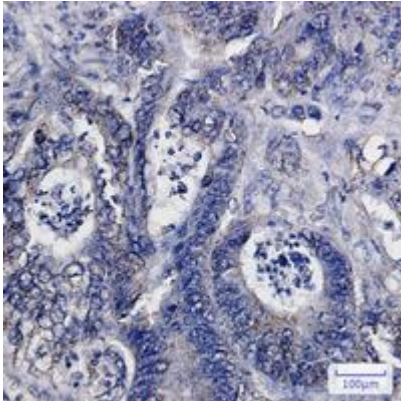
纯化: Affinity Purified

种属反应性: Human, Mouse and Rat

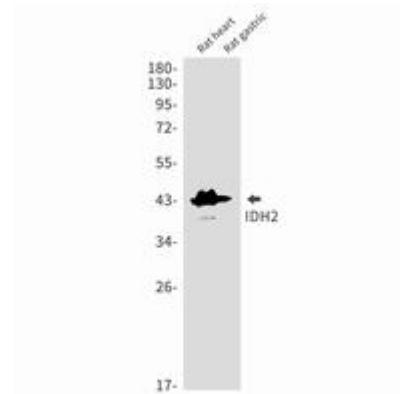
成分: PBS (without Mg²⁺ and Ca²⁺), pH 7.3 containing 50% glycerol, 0.5% BSA and 0.02% sodium azide

研究领域: Signal Transduction

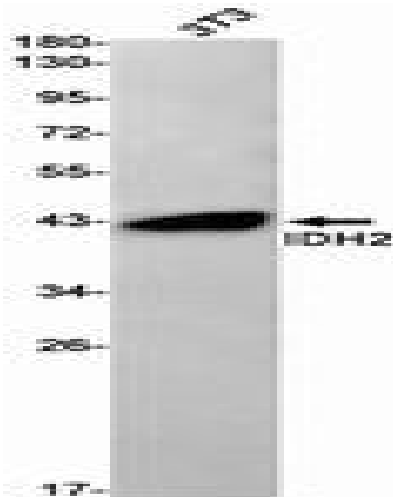
储存和运输: Store at -20°C. Avoid repeated freezing and thawing



Immunohistochemistry analysis of paraffin-embedded Human colon cancer using IDH2 antibody. High-pressure and temperature Sodium Citrate pH 6.0 was used for antigen retrieval.



Western blot analysis of IDH2 in rat heart, rat gastric lysates using IDH2 antibody.



Western blot analysis of IDH2 in 3T3 lysates using IDH2 antibody.