

ID4 RABBIT PAB

货号: S219789

产品全名: ID4 兔多抗

基因符号 IDB4, bHLHb27

UNIPROT ID: P47928 (Gene Accession - NP_001537)

背景: DNA-binding protein inhibitor ID-4 is a protein that in humans is encoded by the ID4 gene. Transcription factors containing a basic helix-loop-helix (bHLH) motif regulate expression of tissue-specific genes in a number of mammalian and insect systems. DNA-binding activity of the bHLH proteins is dependent on formation of homo- and/or heterodimers. Dominant-negative (antimorph) HLH proteins encoded by Id-related genes, such as ID4, also contain the HLH-dimerization domain but lack the DNA-binding basic domain. Consequently, Id proteins inhibit binding to DNA and transcriptional transactivation by heterodimerization with bHLH proteins.

抗原: Synthetic peptide of human ID4

经过测试的应用: ELISA, IHC

推荐稀释比: IHC: 20-100; ELISA: 1000-5000

种属反应性: Rabbit

克隆性: Rabbit Polyclonal

亚型: Immunogen-specific rabbit IgG

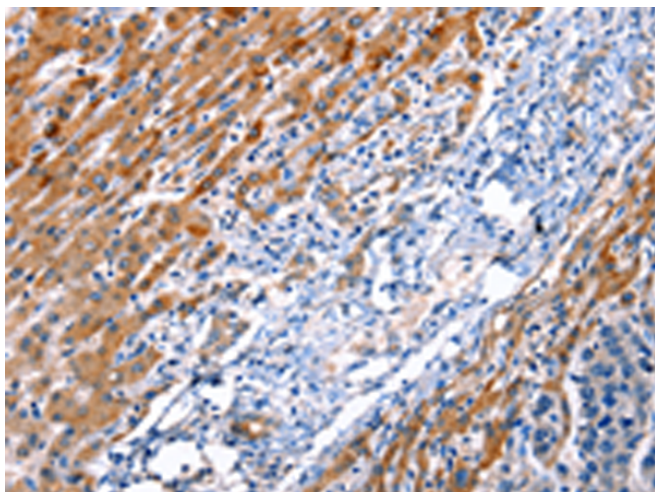
纯化: Antigen affinity purification

种属反应性: Human, Mouse

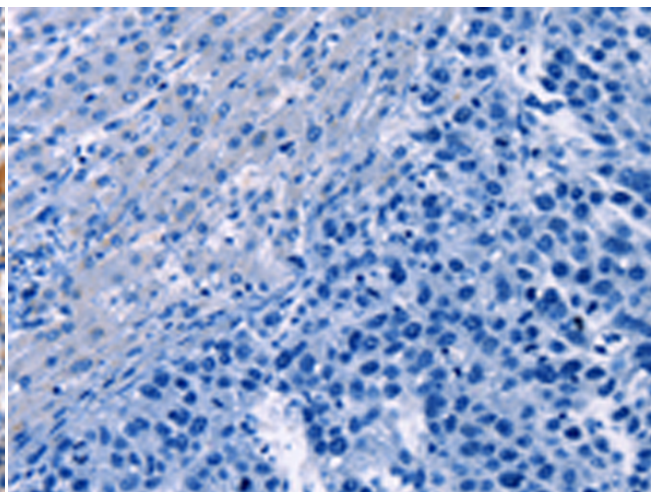
成分: PBS (without Mg²⁺ and Ca²⁺), pH 7.4, 150 mM NaCl, 0.05% Sodium Azide and 40% glycerol

研究领域: Epigenetics and Nuclear Signaling, Signal Transduction

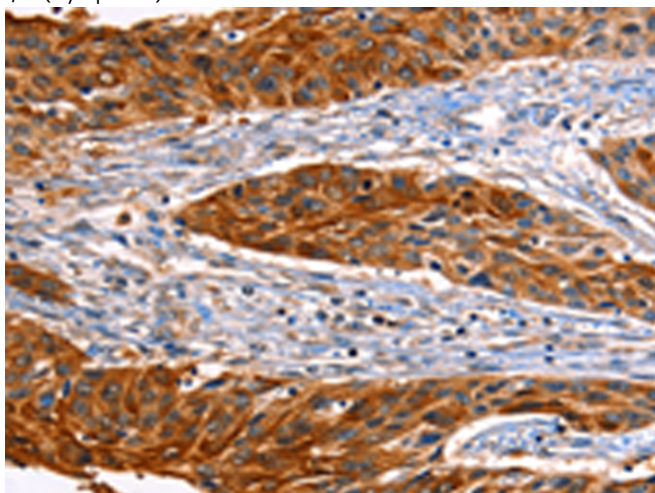
储存和运输: Store at -20°C. Avoid repeated freezing and thawing



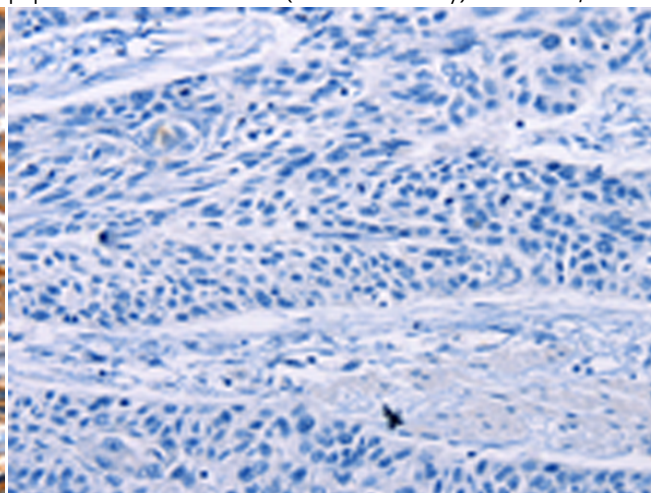
Immunohistochemistry analysis of paraffin embedded Human esophagus cancer tissue using 219789 (ID4 Antibody) at a dilution of 1/20 (Cytoplasm).



In comparison with the IHC on the left, the same paraffin-embedded Human esophagus cancer tissue is first treated with the synthetic peptide and then with 219789 (Anti-ID4 Antibody) at dilution 1/20.



The image on the left is immunohistochemistry of paraffin-embedded Human liver cancer tissue using 219789 (Anti-ID4 Antibody) at a dilution of 1/20.



In comparison with the IHC on the left, the same paraffin-embedded Human liver cancer tissue is first treated with synthetic peptide and then with D260373 (Anti-ID4 Antibody) at dilution 1/20.



Product Description

Pioneering GTPase and Oncogene Product Development since 2010
