

ICAM2 RABBIT MAB

货号: N263376

产品全名: ICAM2 兔单克隆抗体

基因符号 CD102; Ly-60; Icam-2

UNIPROT ID: P35330

背景: ICAM proteins are ligands for the leukocyte adhesion protein LFA-1 (integrin alpha-L/beta-2). ICAM2 may play a role in lymphocyte recirculation by blocking LFA-1-dependent cell adhesion. It mediates adhesive interactions important for antigen-specific immune response, NK-cell mediated clearance, lymphocyte recirculation, and other cellular interactions important for immune response and surveillance.

抗原: Recombinant protein of mouse ICAM2

经过测试的应用: WB,IHC-P,IP

推荐稀释比: WB: 1/500-1/1000 IHC: 1/50-1/100 IP: 1/20

种属反应性: Rabbit

克隆性: Rabbit Monoclonal

克隆编号: R06-7A3

分子量: Calculated MW: 31 kDa; Observed MW: 50-60 kDa

亚型: IgG

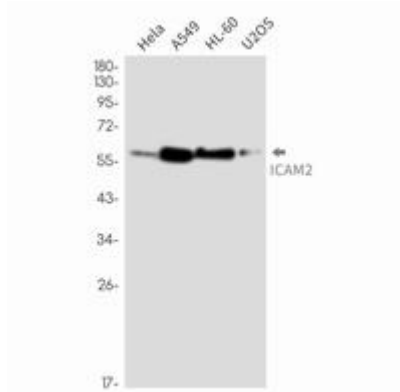
纯化: Affinity Purified

种属反应性: Human,Mouse

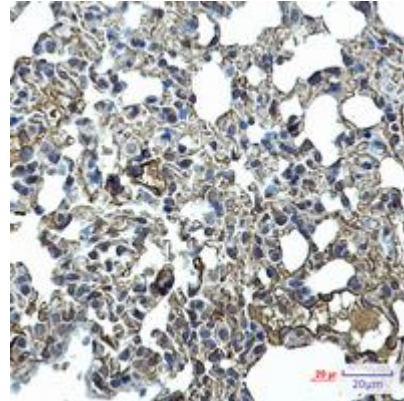
成分: PBS (without Mg²⁺ and Ca²⁺), pH 7.3 containing 50% glycerol, 0.5% BSA and 0.02% sodium azide

研究领域: -

储存和运输: Store at -20°C. Avoid repeated freezing and thawing



Western blot analysis of ICAM2 in HeLa, A549, HL-60, U2OS lysates using ICAM2 antibody.



Immunohistochemistry analysis of paraffin-embedded mouse lung using ICAM2 antibody. High-pressure and temperature Sodium Citrate pH 6.0 was used for antigen retrieval.