

## IBA1 RABBIT MAB

货号: N262378

产品全名: Iba1 兔单克隆抗体

基因符号 G1; Iba1; AIF-1; AI607846; D17H6S50E

**UNIPROT ID:** O70200

**背景:** Actin-binding protein that enhances membrane ruffling and RAC activation. Enhances the actin-bundling activity of LCPI. Binds calcium. Plays a role in RAC signaling and in phagocytosis. May play a role in macrophage activation and function. Promotes the proliferation of vascular smooth muscle cells and of T-lymphocytes. Enhances lymphocyte migration. Plays a role in vascular inflammation.

**抗原:** A synthetic peptide of mouse Iba1

**经过测试的应用:** WB,IHC-P

**推荐稀释比:** WB: 1/500-1/1000 IHC: 1/50-1/100

**种属反应性:** Rabbit

**克隆性:** Rabbit Monoclonal

**克隆编号:** R06-8B5

**分子量:** Calculated MW: 17 kDa; Observed MW: 17 kDa

**亚型:** IgG

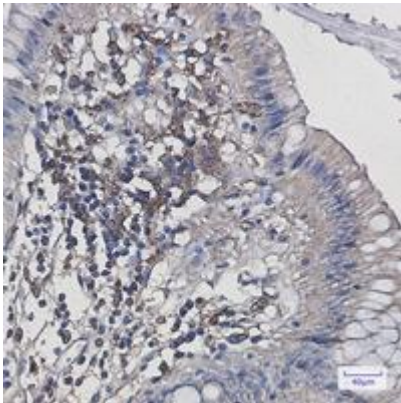
**纯化:** Affinity Purified

**种属反应性:** Human, Mouse and Rat

**成分:** PBS (without Mg<sup>2+</sup> and Ca<sup>2+</sup>), pH 7.3 containing 50% glycerol, 0.5% BSA and 0.02% sodium azide

**研究领域:** Neuroscience&Microglia

**储存和运输:** Store at -20°C. Avoid repeated freezing and thawing



Immunohistochemistry analysis of paraffin-embedded Human colon cancer using Iba1 antibody. High-pressure and temperature Sodium Citrate pH 6.0 was used for antigen retrieval.



Western blot analysis of Iba1 in C6, 3T3, HeLa lysates using Iba1 antibody.