

HUMAN SERUM ALBUMIN (1A8) MOUSE MAB

货号: N261404

产品全名: Human Serum Albumin (1A8) 小鼠单抗

基因符号 ALB; ALBU_HUMAN; Albumin (32 AA); Albumin (AA 34); Albumin; Analbuminemia; Bisalbuminemia; Cell growth inhibiting protein 42; DKFZp779N1935; Dysalbuminemic hyperthyroxinemia; Growth inhibiting protein 20; HSA; Hyperthyroxinemia dysalbuminemic; Serum albumin.

UNIPROT ID: P02768

背景: Albumin is a soluble, monomeric protein which comprises about one-half of the blood serum protein. Albumin functions primarily as a carrier protein for steroids, fatty acids, and thyroid hormones and plays a role in stabilizing extracellular fluid volume.

抗原: Purified Human serum albumin.

经过测试的应用: WB,ELISA

推荐稀释比: WB: 1/500-1/1000 ELISA: 1/10000

种属反应性: Mouse

克隆性: Mouse Monoclonal

克隆编号: 1A8-C5-B4

分子量: Calculated MW: 69 kDa; Observed MW: 69 kDa

亚型: IgG1

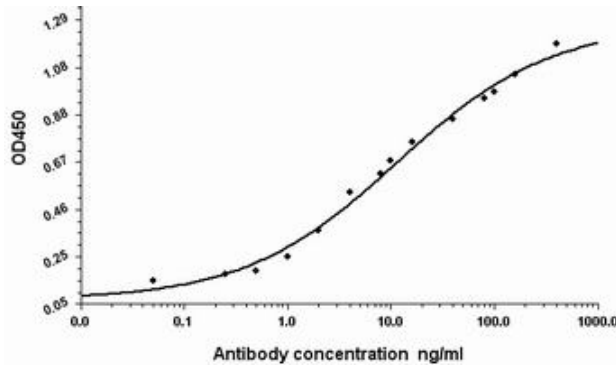
纯化: Affinity Purified

种属反应性: Human

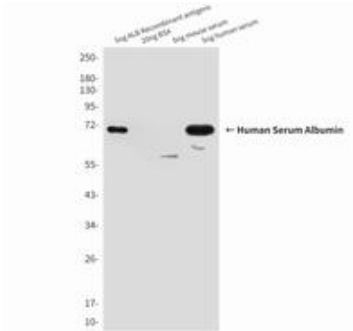
成分: PBS (without Mg²⁺ and Ca²⁺), pH 7.3 containing 50% glycerol, 0.5% BSA and 0.02% sodium azide

研究领域: Cardiovascular

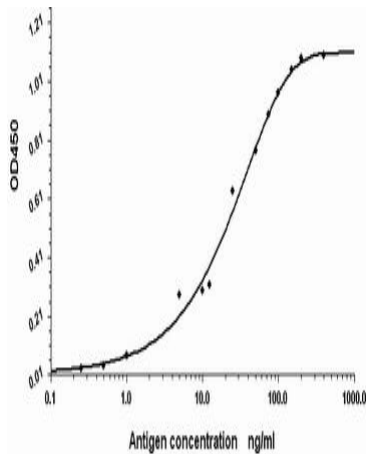
储存和运输: Store at -20°C. Avoid repeated freezing and thawing



Indirect ELISA assay for antiHuman Serum Albumin antibody. Antigen coating concentration: 8ug/ml.



Western blot analysis of Human Serum Albumin in 0.5nl Human serum and 5ng ALB Recombinant antigens lysates using Human Serum Albumin antibody.



Standard Curve for Human Serum Albumin (Analyte: Human Serum Albumin protein); using Capture antibody mouse monoclonal [1A8C5B4] to Human Serum Albumin at 8ug/ml and Detector antibody Rabbit polyclonal antiserum to Human Serum Albumin.