

HUMAN KAPPA LIGHT CHAIN RABBIT PAB

货号: N225254

产品全名: Human kappa Light Chain 兔多抗

基因符号 HCAK1; Ig kappa chain C region; IGKC; IMMUNOGLOBULIN InV; Km

UNIPROT ID: P01834

背景: Constant region of immunoglobulin light chains.

Immunoglobulins, also known as antibodies, are membrane-bound or secreted glycoproteins produced by B lymphocytes. In the recognition phase of humoral immunity, the membrane-bound immunoglobulins serve as receptors which, upon binding of a specific antigen, trigger the clonal expansion and differentiation of B lymphocytes into immunoglobulins-secreting plasma cells.

抗原: Other Immunogen Type corresponding to Human Kappa light chain(constant).

经过测试的应用: WB,ELISA

推荐稀释比: WB: 1/500-1/1000 ELISA: 1/10000

种属反应性: Rabbit

克隆性: Rabbit Polyclonal

分子量: Calculated MW: 12 kDa; Observed MW: 25 kDa

亚型: IgG

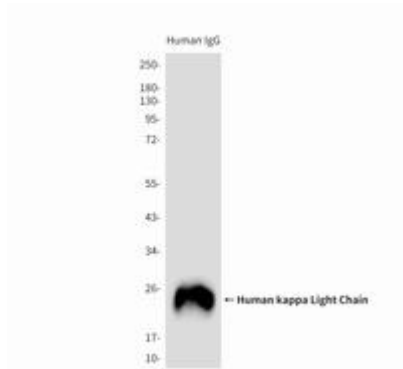
纯化: Affinity Purified

种属反应性: Human

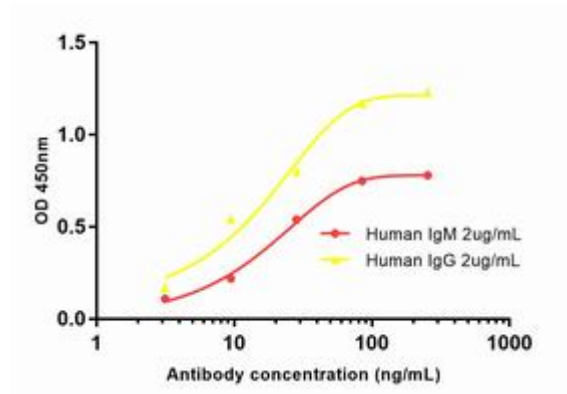
成分: PBS (without Mg²⁺ and Ca²⁺), pH 7.3 containing 50% glycerol, 0.5% BSA and 0.02% sodium azide

研究领域: Immunology

储存和运输: Store at -20°C. Avoid repeated freezing and thawing



Western blot analysis of Human kappa Light Chain in total Human IgG reduced and denatured in 2X SDS loading buffer with DTT using Human kappa Light Chain antibody



Indirect ELISA assay for Rabbit Human kappa light chain antibody. Antigen coating concentration: 2ug/ml.