

HUMAN KAPPA LIGHT CHAIN RABBIT MAB

货号: N263631

产品全名: Human kappa Light Chain 兔单克隆抗体

基因符号 HCAK1; Ig kappa chain C region; IGKC; IMMUNOGLOBULIN InV; Km

UNIPROT ID: P01834

背景: Constant region of immunoglobulin light chains.

Immunoglobulins, also known as antibodies, are membrane-bound or secreted glycoproteins produced by B lymphocytes. In the recognition phase of humoral immunity, the membrane-bound immunoglobulins serve as receptors which, upon binding of a specific antigen, trigger the clonal expansion and differentiation of B lymphocytes into immunoglobulins-secreting plasma cells.

抗原: A synthesized peptide derived from human Human Kappa Chain

经过测试的应用: WB,IHC-F,IHC-P,ICC/IF

推荐稀释比: WB: 1/500-1/1000 IHC: 1/50-1/100 IF: 1/50-1/200

种属反应性: Rabbit

克隆性: Rabbit Monoclonal

克隆编号: R02-7H3

分子量: Calculated MW: 12 kDa; Observed MW: 26 kDa

亚型: IgG

纯化: Affinity Purified

种属反应性: Human

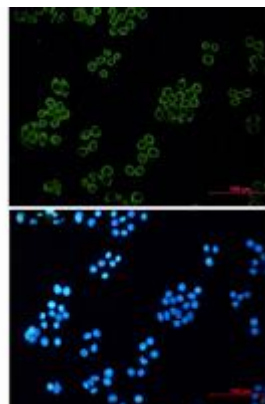
成分: PBS (without Mg²⁺ and Ca²⁺), pH 7.3 containing 50% glycerol, 0.5% BSA and 0.02% sodium azide

研究领域: Immunology

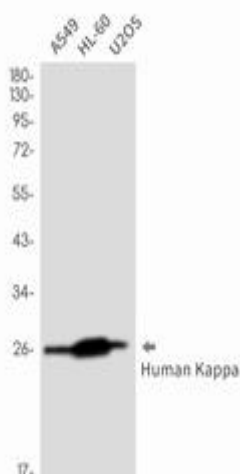
储存和运输: Store at -20°C. Avoid repeated freezing and thawing



Immunohistochemistry analysis of paraffin-embedded Human tonsil tissue using Human Kappa Light Chain antibody. High-pressure and temperature Sodium Citrate pH 6.0 was used for antigen retrieval.



Immunocytochemistry analysis of Hela using Human kappa Light Chain antibody, and DAPI (blue).



Western blot analysis of Human Kappa Light Chain in A549, HL-60, U2OS lysates using Human Kappa Light Chain antibody. Observed band size: 26 kDa.