

HUMAN IGG RABBIT PAB

货号: N225832

产品全名: Human IgG 兔多抗

基因符号 IGHG1; Ig gamma-1 chain C region

UNIPROT ID: P01857/P01859/P01860/P01861

背景: IgG is a monomeric immunoglobulin, built of two heavy chains gamma and two light chains. Each molecule has two antigen binding sites. This is the most abundant immunoglobulin and is approximately equally distributed in blood and in tissue liquids, constituting 75% of serum immunoglobulins in humans.

抗原: A synthesized peptide derived from human Human IgG

经过测试的应用: WB,IHC-P

推荐稀释比: WB: 1/500-1/1000 IHC: 1/50-1/100

种属反应性: Rabbit

克隆性: Rabbit Polyclonal

分子量: Calculated MW: 55,25 kDa; Observed MW: 55,25 kDa

亚型: IgG

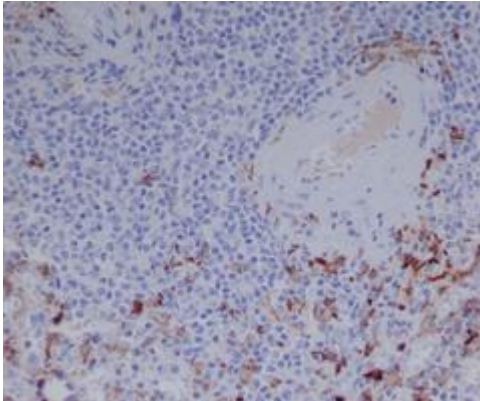
纯化: Affinity Chromatography

种属反应性: Human

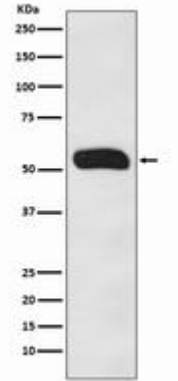
成分: PBS (without Mg²⁺ and Ca²⁺), pH 7.3 containing 50% glycerol, 0.5% BSA and 0.02% sodium azide

研究领域: Immunology

储存和运输: Store at -20°C. Avoid repeated freezing and thawing



Immunohistochemistry analysis of paraffin-embedded Human spleen using Human IgG antibody. High-pressure and temperature Sodium Citrate pH 6.0 was used for antigen retrieval.



Western blot analysis of Human IgG in Human plasma lysates using Human IgG antibody.