

HUMAN IGD RABBIT PAB

货号: N225977

产品全名: Human IgD 兔多抗

基因符号 Ig delta chain C region

UNIPROT ID: P01880

背景: There are two named isoforms of IGHD produced by alternative splicing, a secreted form and a single pass type I membrane protein.

抗原: A synthesized peptide derived from human IGHD

经过测试的应用: WB,IHC-P

推荐稀释比: WB: 1/500-1/1000 IHC: 1/50-1/100

种属反应性: Rabbit

克隆性: Rabbit Polyclonal

分子量: Calculated MW: 42 kDa; Observed MW: 84 kDa

亚型: IgG

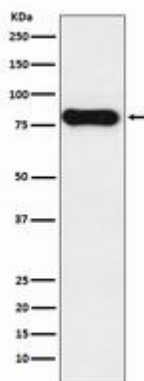
纯化: Affinity Chromatography

种属反应性: Human

成分: PBS (without Mg²⁺ and Ca²⁺), pH 7.3 containing 50% glycerol, 0.5% BSA and 0.02% sodium azide

研究领域: Immunology

储存和运输: Store at -20°C. Avoid repeated freezing and thawing



Western blot analysis of IGHD in Human tonsil lysates using Human IgD antibody.