

## HTRA2 (8G11) MOUSE MAB

货号: N261437

产品全名: HtrA2 (8G11) 小鼠单抗

基因符号 High temperature requirement protein A2; HTRA 2; HtrA like serine protease; HtrA serine peptidase 2; HtrA; E. coli; homolog of; 2; HtrA2; HTRA2\_HUMAN; mitochondrial; Omi stress regulated endoprotease; Omi stress-regulated endoprotease; PARK 13; PARK13; Protease serine 25; PRSS 25; PRSS25; Serine protease 25; Serine protease HTRA2; Serine protease HTRA2 mitochondrial; Serine protease htra2 mitochondrial precursor; Serine protease omi; Serine proteinase OMI.

**UNIPROT ID:** O43464

背景: High temperature requirement protein A2 (HtrA2)/Omi is a serine protease with homology to the E. coli HtrA protein (DegP) and is thought to be involved in apoptosis and stress-induced degradation of misfolded proteins. While HtrA2 was originally identified to be present in either the nucleus or endoplasmic reticulum, subsequent studies have shown that it localizes in mitochondria and is released during apoptosis.

抗原: Recombinant human HtrA2/Omi protein.

经过测试的应用: WB,IP

推荐稀释比: WB: 1/500-1/1000 IP: 1/20

种属反应性: Mouse

克隆性: Mouse Monoclonal

克隆编号: 8G11-4B8-4F10-G5

分子量: Calculated MW: 49 kDa; Observed MW: 37 kDa

亚型: IgG1

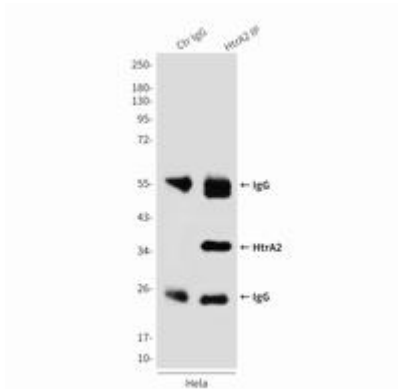
纯化: Affinity Purified

种属反应性: Human

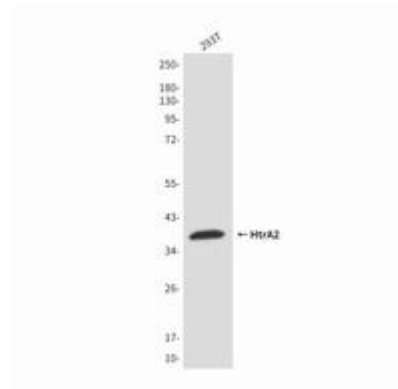
成分: PBS (without Mg<sup>2+</sup> and Ca<sup>2+</sup>), pH 7.3 containing 50% glycerol, 0.5% BSA and 0.02% sodium azide

研究领域: Neuroscience

储存和运输: Store at -20°C. Avoid repeated freezing and thawing



Immunoprecipitation analysis of HtrA2 (8G11) in HeLa lysates using HtrA2/Omi antibody.



Western blot analysis of HtrA2/Omi in 293T lysates using HtrA2/Omi antibody.