

## HTR3C RABBIT PAB

货号: S217176

产品全名: HTR3C 兔多抗

基因符号

**UNIPROT ID:** Q8WXA8 (Gene Accession - BC131799)

**背景:** The product of this gene belongs to the ligand-gated ion channel receptor superfamily. This gene encodes subunit C of the type 3 receptor for 5-hydroxytryptamine (serotonin), a biogenic hormone that functions as a neurotransmitter, a hormone, and a mitogen. This receptor causes fast, depolarizing responses in neurons after activation. Genes encoding subunits C, D and E form a cluster on chromosome 3.

**抗原:** Fusion protein of human HTR3C

**经过测试的应用:** ELISA, WB, IHC

**推荐稀释比:** IHC: 50-200;WB: 200-1000;ELISA: 5000-10000

**种属反应性:** Rabbit

**克隆性:** Rabbit Polyclonal

**亚型:** Immunogen-specific rabbit IgG

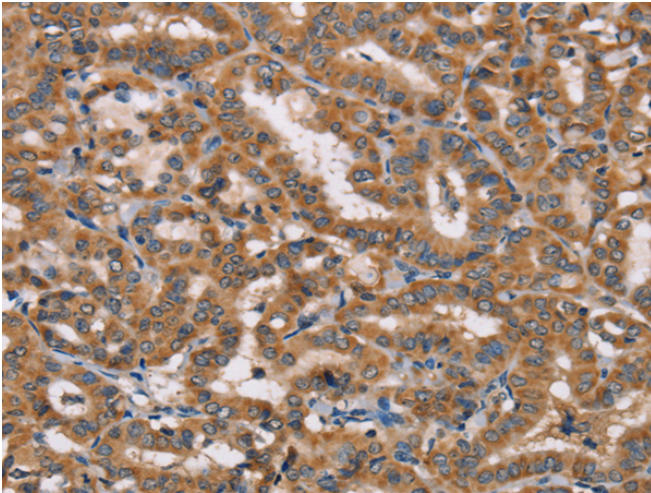
**纯化:** Antigen affinity purification

**种属反应性:** Human

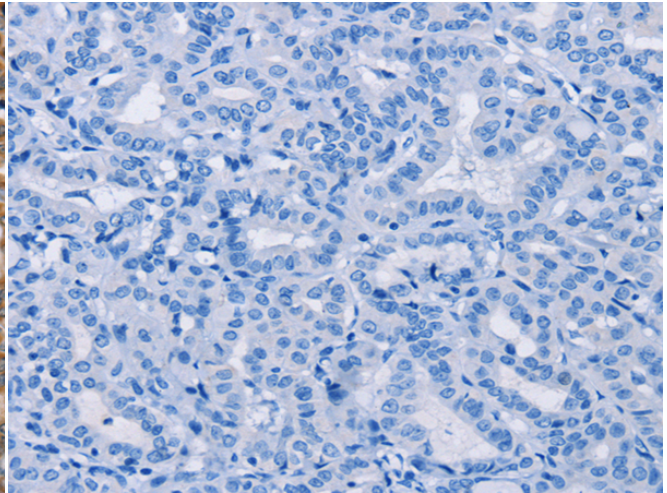
**成分:** PBS (without Mg<sup>2+</sup> and Ca<sup>2+</sup>), pH 7.4, 150 mM NaCl, 0.05% Sodium Azide and 40% glycerol

**研究领域:** Neuroscience

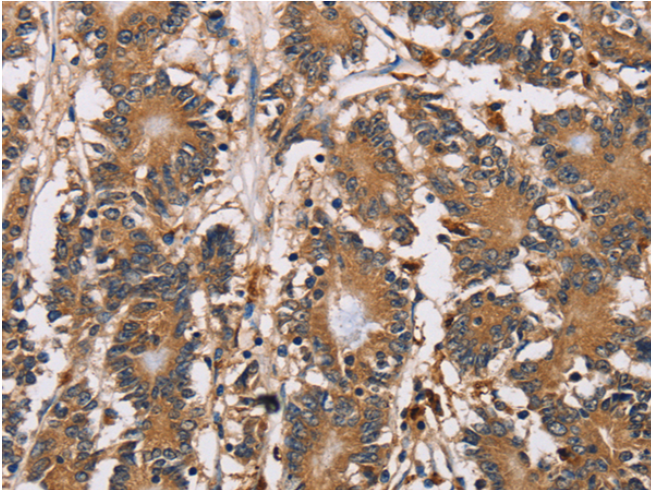
**储存和运输:** Store at -20°C. Avoid repeated freezing and thawing



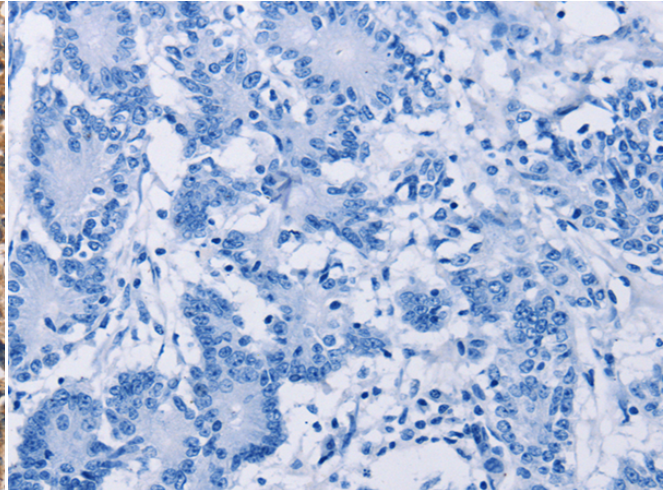
Immunohistochemistry analysis of paraffin embedded Human thyroid cancer tissue using 217176(HTR3C Antibody) at a dilution of 1/40(Cytoplasm).



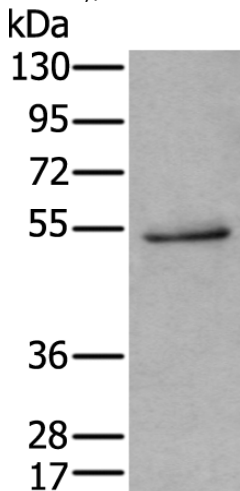
In comparison with the IHC on the left, the same paraffin-embedded Human thyroid cancer tissue is first treated with the fusion protein and then with 217176(Anti-HTR3C Antibody) at dilution 1/40.



The image on the left is immunohistochemistry of paraffin-embedded Human colon cancer tissue using 217176(Anti-HTR3C Antibody) at a dilution of 1/40.



In comparison with the IHC on the left, the same paraffin-embedded Human colon cancer tissue is first treated with fusion protein and then with D221924(Anti-HTR3C Antibody) at dilution 1/40.



Gel: 8%SDS-PAGE, Lysate: 40 µg;  
Lane: Human cerebrum tissue lysate;  
Primary antibody: 217176(HTR3C Antibody) at dilution 1/400;  
Secondary antibody: Goat anti rabbit IgG at 1/8000 dilution;  
Exposure time: 2 minutes



# Product Description

Pioneering GTPase and Oncogene Product Development since 2010

---