

HTR1F RABBIT PAB

货号: S222430

产品全名: HTR1F 兔多抗

基因符号: 5HT6; MR77; 5-HT1F; HTR1EL; 5-HT-1F

UNIPROT ID: P30939 (Gene Accession - NP_000857)

背景: Enables G protein-coupled serotonin receptor activity and serotonin binding activity. Involved in adenylate cyclase-inhibiting G protein-coupled receptor signaling pathway. Is integral component of plasma membrane.

抗原: Synthetic peptide of human HTR1F

经过测试的应用: ELISA, IHC

推荐稀释比: IHC: 50-200; ELISA: 5000-10000

种属反应性: Rabbit

克隆性: Rabbit Polyclonal

亚型: Immunogen-specific rabbit IgG

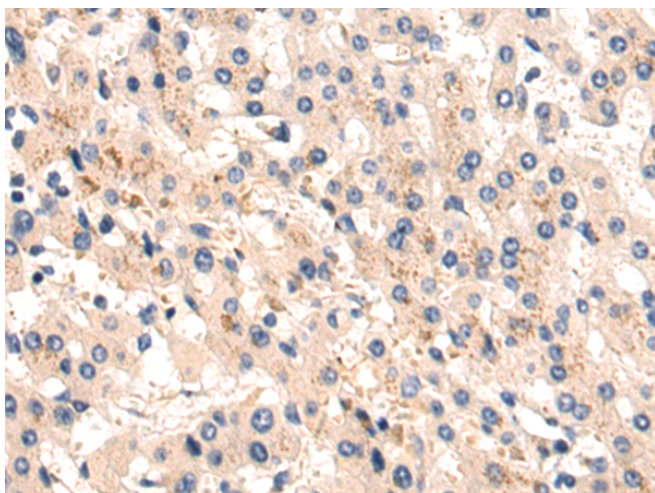
纯化: Antigen affinity purification

种属反应性: Human

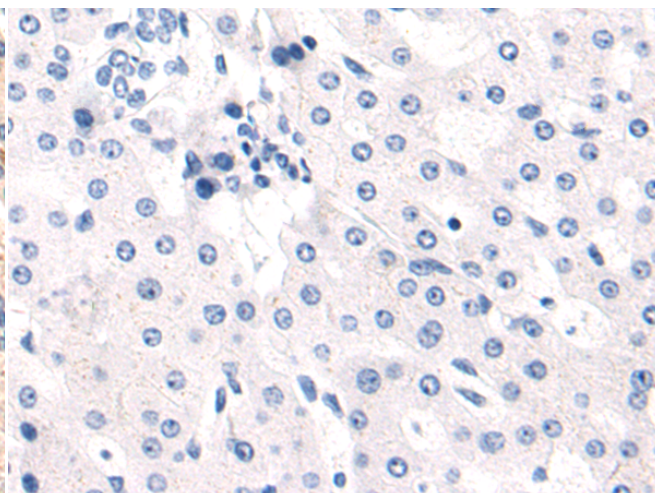
成分: PBS (without Mg²⁺ and Ca²⁺), pH 7.4, 150 mM NaCl, 0.05% Sodium Azide and 40% glycerol

研究领域: Neuroscience, Metabolism

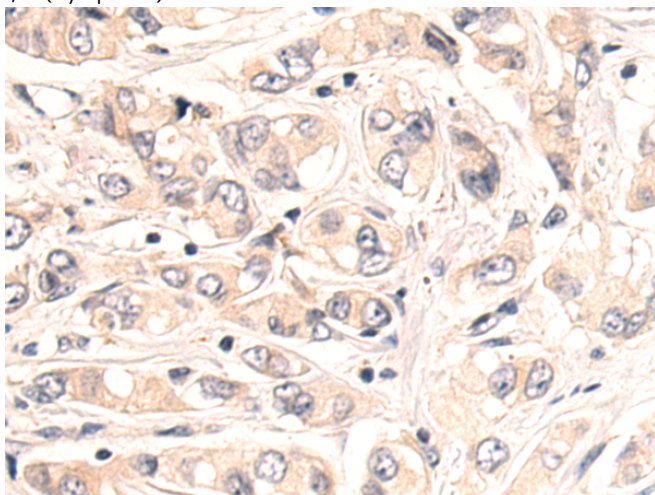
储存和运输: Store at -20°C. Avoid repeated freezing and thawing



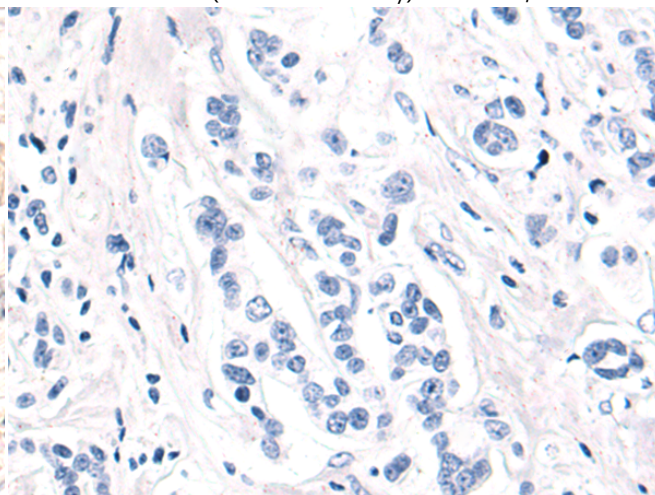
Immunohistochemistry analysis of paraffin embedded Human liver cancer tissue using 222430(HTR1F Antibody) at a dilution of 1/50(Cytoplasm).



In comparison with the IHC on the left, the same paraffin-embedded Human liver cancer tissue is first treated with the synthetic peptide and then with 222430(Anti-HTR1F Antibody) at dilution 1/50.



The image on the left is immunohistochemistry of paraffin-embedded Human breast cancer tissue using 222430(Anti-HTR1F Antibody) at a dilution of 1/50.



In comparison with the IHC on the left, the same paraffin-embedded Human breast cancer tissue is first treated with synthetic peptide and then with D264598(Anti-HTR1F Antibody) at dilution 1/50.



Product Description

Pioneering GTPase and Oncogene Product Development since 2010
