

HSPBAP1 RABBIT PAB

货号: N225059

产品全名: HspBAP1 兔多抗

基因符号 HSPBAP1; PASS1; HSPB1-associated protein 1; 27 kDa heat shock protein-associated protein 1; Protein associated with small stress protein 1

UNIPROT ID: Q96EW2

背景: May play a role in cellular stress response.

抗原: The antiserum was produced against synthesized peptide derived from the Internal region of human HSPBAP1. AA range:321-370

经过测试的应用: WB,IHC-P,ELISA

推荐稀释比: WB: 1/500-1/1000 IHC: 1/50-1/100 ELISA: 1/10000

种属反应性: Rabbit

克隆性: Rabbit Polyclonal

分子量: Calculated MW: 55 kDa; Observed MW: 55 kDa

亚型: IgG

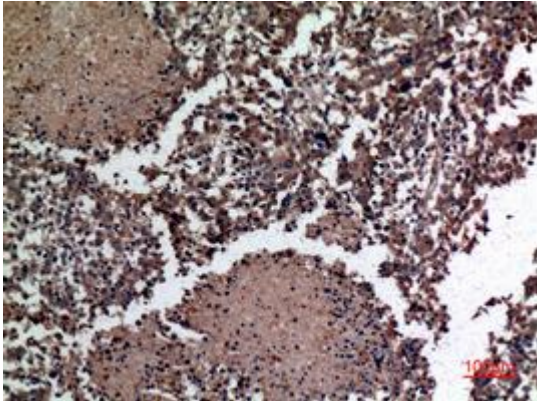
纯化: Affinity Purified

种属反应性: Human

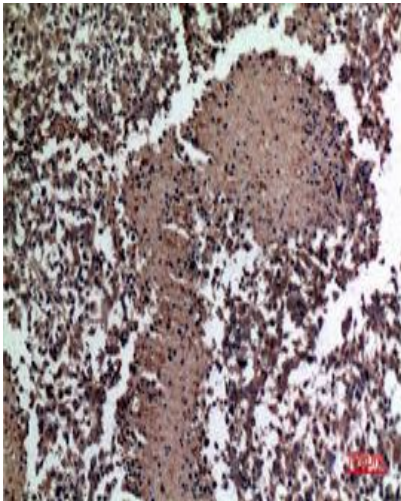
成分: PBS (without Mg²⁺ and Ca²⁺), pH 7.3 containing 50% glycerol, 0.5% BSA and 0.02% sodium azide

研究领域: Epigenetics and Nuclear Signaling

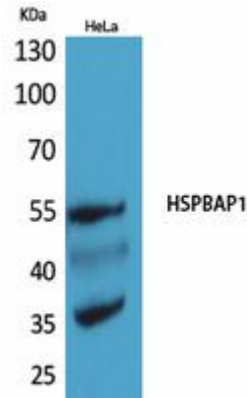
储存和运输: Store at -20°C. Avoid repeated freezing and thawing



Immunohistochemistry analysis of paraffin-embedded Human lungcancer using HspBAP1 antibody. High-pressure and temperature Sodium Citrate pH 6.0 was used for antigen retrieval.



Immunohistochemistry analysis of paraffin-embedded Human lungcancer using HspBAP1 antibody. High-pressure and temperature Sodium Citrate pH 6.0 was used for antigen retrieval.



Western blot analysis of HspBAP1 in HeLa lysates using HspBAP1 antibody.