

## HSPB2 RABBIT PAB

货号: S216563

产品全名: HSPB2 兔多抗

基因符号 MKBP; HSP27; Hs.78846; LOH1ICRIK

**UNIPROT ID:** Q16082 (Gene Accession - BC109393)

**背景:** The protein encoded by this gene belongs to the superfamily of small heat-shock proteins containing a conservative alpha-crystallin domain at the C-terminal part of the molecule. The protein is expressed preferentially in the heart and skeletal muscle. This protein regulates Myotonic Dystrophy Protein Kinase, which plays an important role in maintenance of muscle structure and function.

**抗原:** Fusion protein of human HSPB2

**经过测试的应用:** ELISA, WB, IHC

**推荐稀释比:** IHC: 100-200;WB: 500-2000;ELISA: 5000-10000

**种属反应性:** Rabbit

**克隆性:** Rabbit Polyclonal

**亚型:** Immunogen-specific rabbit IgG

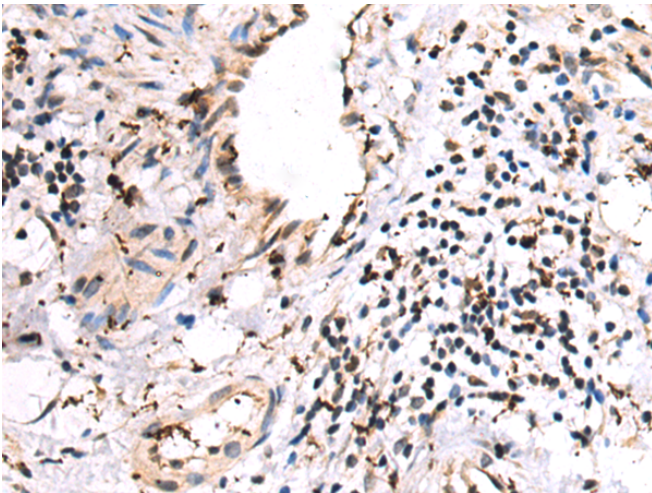
**纯化:** Antigen affinity purification

**种属反应性:** Human, Mouse, Rat

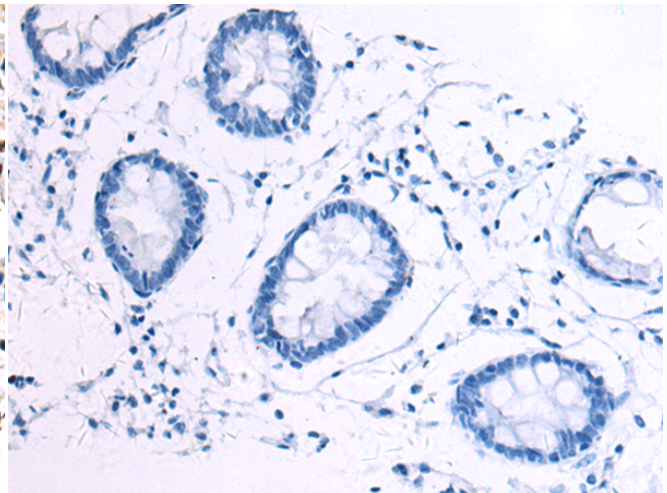
**成分:** PBS (without Mg<sup>2+</sup> and Ca<sup>2+</sup>), pH 7.4, 150 mM NaCl, 0.05% Sodium Azide and 40% glycerol

**研究领域:** Signal Transduction

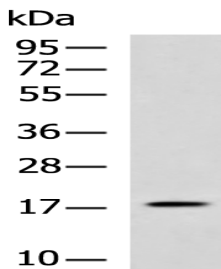
**储存和运输:** Store at -20°C. Avoid repeated freezing and thawing



Immunohistochemistry analysis of paraffin embedded Human colorectal cancer tissue using 216563(HSPB2 Antibody) at a dilution of 1/110(Nucleus).



In comparison with the IHC on the left, the same paraffin-embedded Human colorectal cancer tissue is first treated with the fusion protein and then with 216563(Anti-HSPB2 Antibody) at dilution 1/110.



Gel: 8%SDS-PAGE, Lysate: 40 µg;

Lane: Human heart tissue lysate;

Primary antibody: 216563(HSPB2 Antibody) at dilution 1/800;

Secondary antibody: HRP-conjugated Goat anti rabbit IgG at 1/5000 dilution;

Exposure time: 1 minute