

HSP90 ALPHA/BETA RABBIT MAB

货号: N262374

产品全名: Hsp90 alpha/beta 兔单克隆抗体

基因符号 HSP90AA1; HSP90A; HSPC1; HSPCA; Heat shock protein HSP 90-alpha; Heat shock 86 kDa; HSP 86; HSP86; Renal carcinoma antigen NY-REN-38; HSP90AB1; HSP90B; HSPC2; HSPCB; Heat shock protein HSP 90-beta; HSP 90; Heat shock 84 kDa; HSP 84; HSP84

UNIPROT ID: P07900/P08238

背景: Molecular chaperone that promotes the maturation, structural maintenance and proper regulation of specific target proteins involved for instance in cell cycle control and signal transduction. Undergoes a functional cycle that is linked to its ATPase activity. This cycle probably induces conformational changes in the client proteins, thereby causing their activation.

抗原: Recombinant protein of human Hsp90 beta

经过测试的应用: WB,IHC-F,IHC-P,ICC/IF,IP

推荐稀释比: WB: 1/500-1/1000 IHC: 1/50-1/100 IF: 1/50-1/200 IP: 1/20

种属反应性: Rabbit

克隆性: Rabbit Monoclonal

克隆编号: R08-8A1

分子量: Calculated MW: 85 kDa; Observed MW: 90 kDa

亚型: IgG

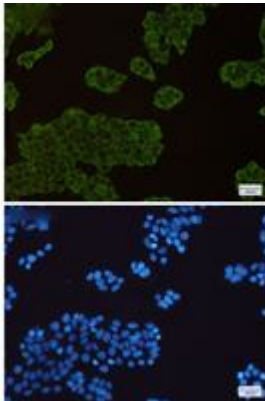
纯化: Affinity Purified

种属反应性: Human, Mouse and Rat

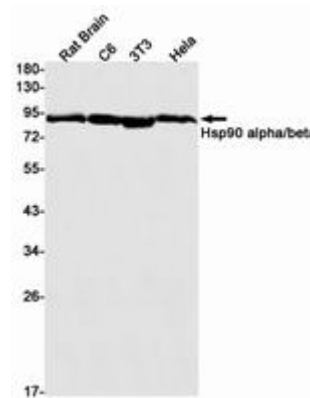
成分: PBS (without Mg²⁺ and Ca²⁺), pH 7.3 containing 50% glycerol, 0.5% BSA and 0.02% sodium azide

研究领域: Signal Transduction

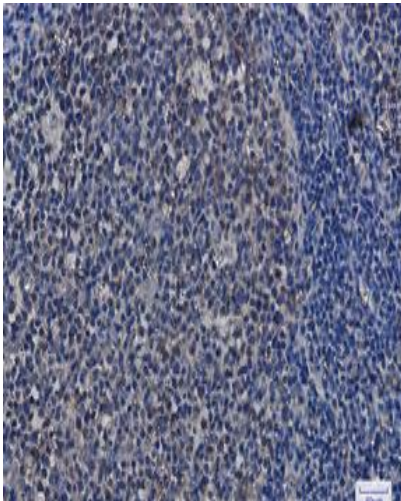
储存和运输: Store at -20°C. Avoid repeated freezing and thawing



Immunocytochemistry analysis of Hsp90 alpha/beta (green) in HeLa using Hsp90 alpha/beta antibody, and DAPI (blue)



Western blot analysis of Hsp90 alpha/beta in rat Brain, C6, 3T3, HeLa lysates using Hsp90 alpha/beta antibody.



Immunohistochemistry analysis of paraffin-embedded Human tonsil using Hsp90 alpha/beta antibody. High-pressure and temperature Sodium Citrate pH 6.0 was used for antigen retrieval.