

HSDL2 RABBIT PAB

货号: S219340

产品全名: HSDL2 兔多抗

基因符号: C9orf99; SDR13C1

UNIPROT ID: Q6YNI6 (Gene Accession - BC004331)

背景: Has apparently no steroid dehydrogenase activity.

抗原: Fusion protein of human HSDL2

经过测试的应用: ELISA, WB, IHC

推荐稀释比: IHC: 50-100;WB: 1000-5000;ELISA: 5000-10000

种属反应性: Rabbit

克隆性: Rabbit Polyclonal

亚型: Immunogen-specific rabbit IgG

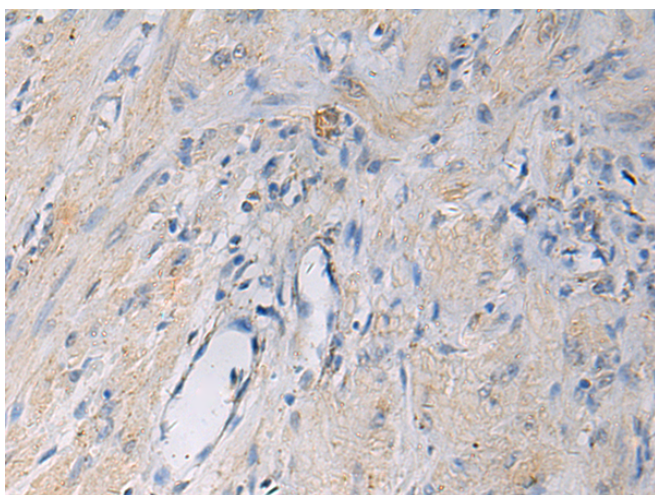
纯化: Antigen affinity purification

种属反应性: Human

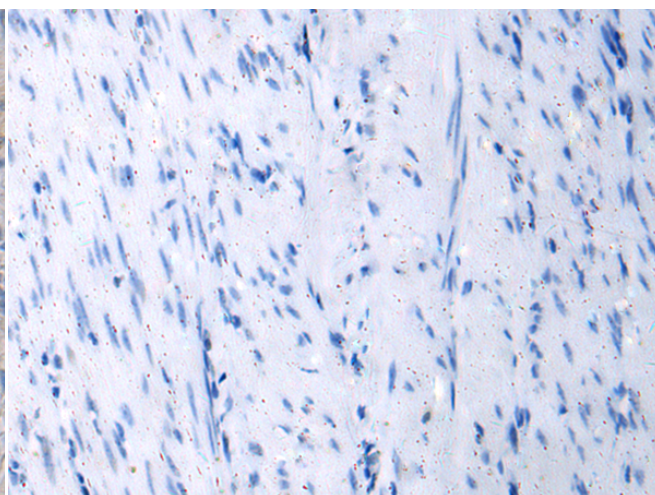
成分: PBS (without Mg²⁺ and Ca²⁺), pH 7.4, 150 mM NaCl, 0.05% Sodium Azide and 40% glycerol

研究领域: Metabolism

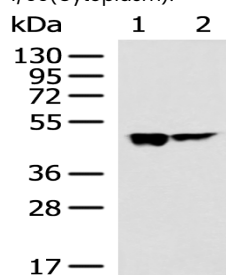
储存和运输: Store at -20°C. Avoid repeated freezing and thawing



Immunohistochemistry analysis of paraffin embedded Human gastric cancer tissue using 219340 (HSDL2 Antibody) at a dilution of 1/55 (Cytoplasm).



In comparison with the IHC on the left, the same paraffin-embedded Human gastric cancer tissue is first treated with the fusion protein and then with 219340 (Anti-HSDL2 Antibody) at dilution 1/55.



Gel: 8%SDS-PAGE, Lysate: 40 µg;

Lane 1-2: 293T and HeLa cell lysates;

Primary antibody: 219340 (HSDL2 Antibody) at dilution 1/1000;

Secondary antibody: HRP-conjugated Goat anti rabbit IgG at 1/5000 dilution;

Exposure time: 1 minute