

HSD17B8 RABBIT PAB

货号: S217513

产品全名: HSD17B8 兔多抗

基因符号 KE6; FABG; HKE6; FABGL; RING2; H2-KE6; SDR30C1; D6S2245E; dJ1033B10.9

UNIPROT ID: Q92506 (Gene Accession - BC008185)

背景: In mice, the Ke6 protein is a 17-beta-hydroxysteroid dehydrogenase that can regulate the concentration of biologically active estrogens and androgens. It is preferentially an oxidative enzyme and inactivates estradiol, testosterone, and dihydrotestosterone. However, the enzyme has some reductive activity and can synthesize estradiol from estrone. The protein encoded by this gene is similar to Ke6 and is a member of the short-chain dehydrogenase superfamily. An alternatively spliced transcript of this gene has been detected, but the full-length nature of this variant has not been determined.

抗原: Fusion protein of human HSD17B8

经过测试的应用: ELISA, WB, IHC

推荐稀释比: IHC: 50-200;WB: 500-2000;ELISA: 2000-5000

种属反应性: Rabbit

克隆性: Rabbit Polyclonal

亚型: Immunogen-specific rabbit IgG

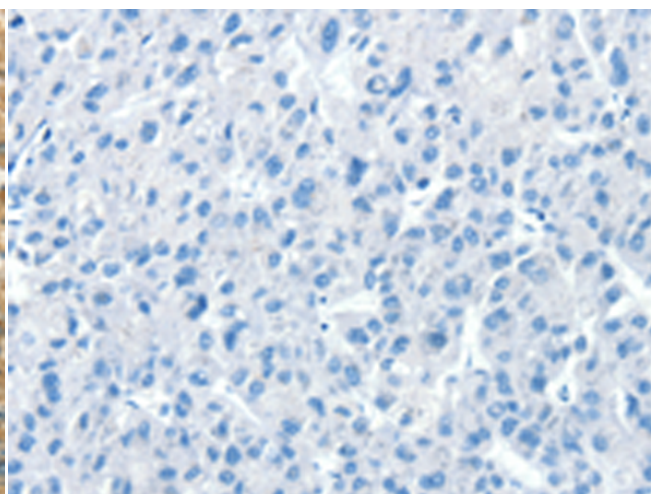
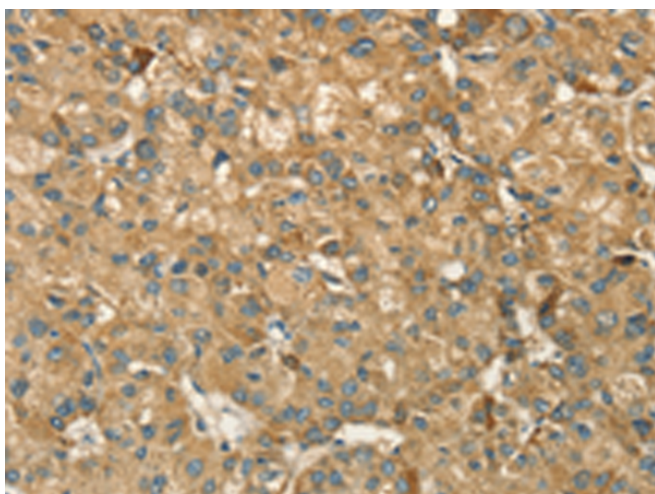
纯化: Antigen affinity purification

种属反应性: Human, Mouse, Rat

成分: PBS (without Mg²⁺ and Ca²⁺), pH 7.4, 150 mM NaCl, 0.05% Sodium Azide and 40% glycerol

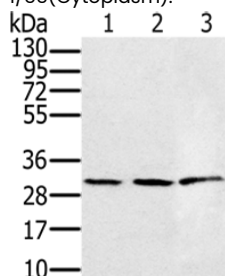
研究领域: Signal Transduction, Neuroscience

储存和运输: Store at -20°C. Avoid repeated freezing and thawing



Immunohistochemistry analysis of paraffin embedded Human liver cancer tissue using 217513(HSD17B8 Antibody) at a dilution of 1/55(Cytoplasm).

In comparison with the IHC on the left, the same paraffin-embedded Human liver cancer tissue is first treated with the fusion protein and then with 217513(Anti-HSD17B8 Antibody) at dilution 1/55.



Gel: 12%SDS-PAGE, Lysate: 40 µg;

Lane 1-3: 293T cells, K562 cells, human fetal liver tissue;

Primary antibody: 217513(HSD17B8 Antibody) at dilution 1/450;

Secondary antibody: Goat anti rabbit IgG at 1/8000 dilution;

Exposure time: 20 seconds