

## HS1BP3 RABBIT PAB

货号: S219015

产品全名: HS1BP3 兔多抗

基因符号: ETM2; HS1-BP3

**UNIPROT ID:** Q53T59 (Gene Accession - BC050636)

**背景:** The protein encoded by this gene shares similarity with mouse Hs1bp3, an Hc1s1/Hs1-interacting protein that may be involved in lymphocyte activation.

**抗原:** Fusion protein of human HS1BP3

**经过测试的应用:** ELISA, WB, IHC

**推荐稀释比:** IHC: 150-300;WB: 500-2000;ELISA: 5000-10000

**种属反应性:** Rabbit

**克隆性:** Rabbit Polyclonal

**亚型:** Immunogen-specific rabbit IgG

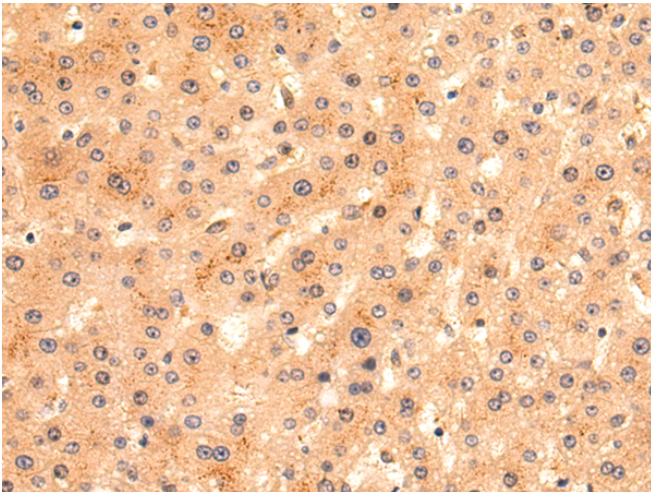
**纯化:** Antigen affinity purification

**种属反应性:** Human, Mouse

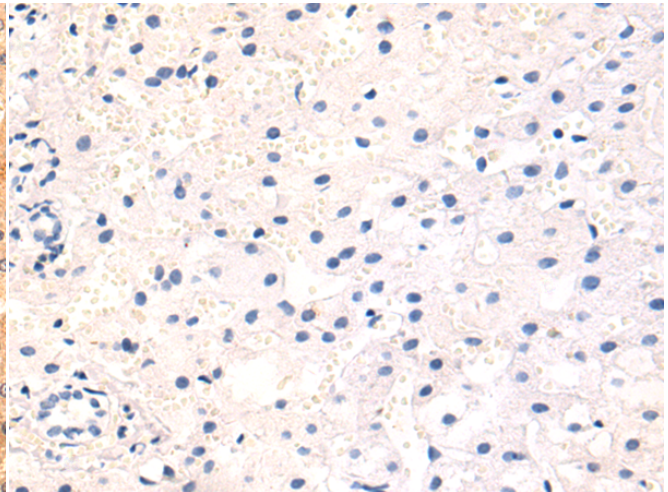
**成分:** PBS (without Mg<sup>2+</sup> and Ca<sup>2+</sup>), pH 7.4, 150 mM NaCl, 0.05% Sodium Azide and 40% glycerol

**研究领域:** Signal Transduction, Neuroscience

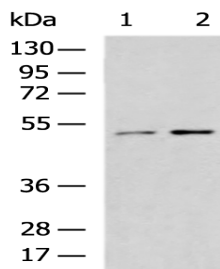
**储存和运输:** Store at -20°C. Avoid repeated freezing and thawing



Immunohistochemistry analysis of paraffin embedded Human liver cancer tissue using 219015(HS1BP3 Antibody) at a dilution of 1/140(Cytoplasm).



In comparison with the IHC on the left, the same paraffin-embedded Human liver cancer tissue is first treated with the fusion protein and then with 219015(Anti-HS1BP3 Antibody) at dilution 1/140.



Gel: 8%SDS-PAGE, Lysate: 40 µg;

Lane 1-2: A549 and NIH/3T3 cell lysates;

Primary antibody: 219015(HS1BP3 Antibody) at dilution 1/1000;

Secondary antibody: HRP-conjugated Goat anti rabbit IgG at 1/5000 dilution;

Exposure time: 1 minute