

HPDL RABBIT PAB

货号: S215972

产品全名: HPDL 兔多抗

基因符号: GLOXD1; 4-HPPD-L

UNIPROT ID: Q96IR7 (Gene Accession - NP_116145)

背景: May have dioxygenase activity.

抗原: Synthetic peptide of human HPDL

经过测试的应用: ELISA, IHC

推荐稀释比: IHC: 25-100; ELISA: 5000-10000

种属反应性: Rabbit

克隆性: Rabbit Polyclonal

亚型: Immunogen-specific rabbit IgG

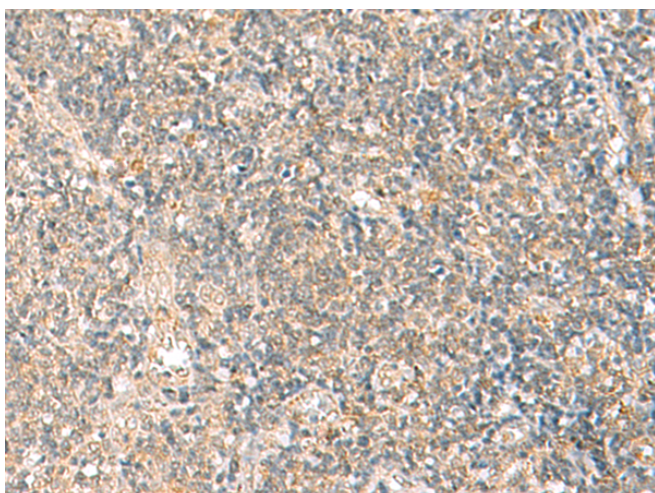
纯化: Antigen affinity purification

种属反应性: Human

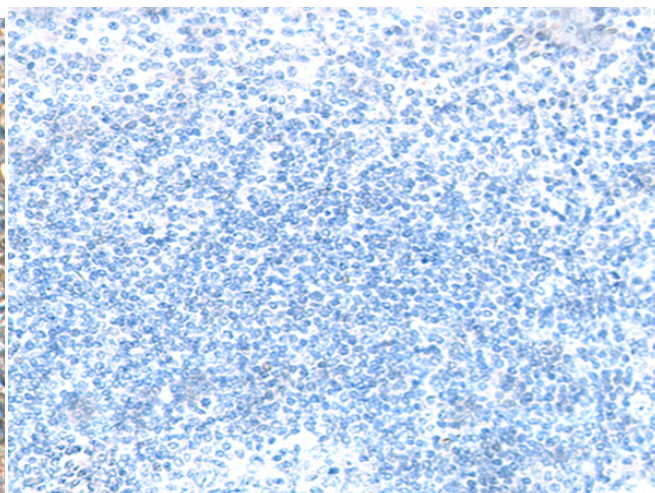
成分: PBS (without Mg²⁺ and Ca²⁺), pH 7.4, 150 mM NaCl, 0.05% Sodium Azide and 40% glycerol

研究领域: Metabolism

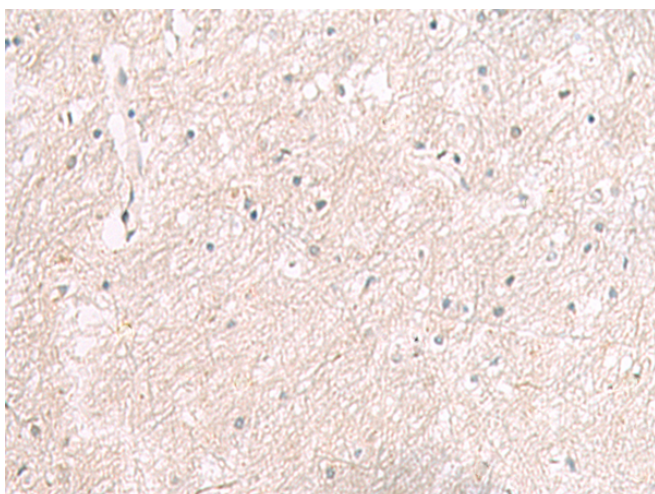
储存和运输: Store at -20°C. Avoid repeated freezing and thawing



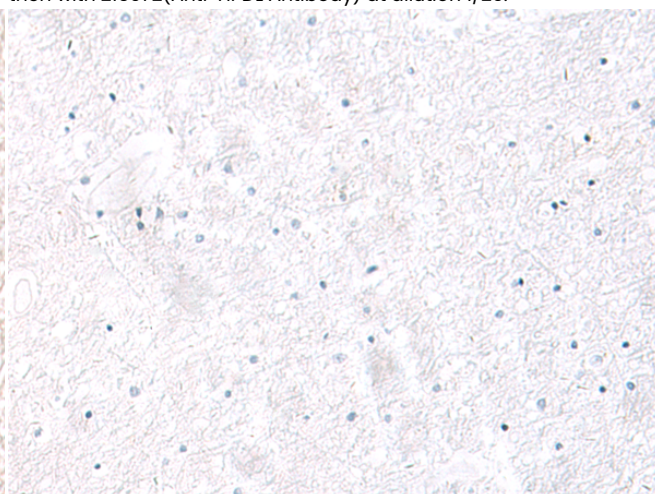
Immunohistochemistry analysis of paraffin embedded Human tonsil tissue using 215972(HPDL Antibody) at a dilution of 1/20(Cytoplasm).



In comparison with the IHC on the left, the same paraffin-embedded Human tonsil tissue is first treated with the synthetic peptide and then with 215972(Anti-HPDL Antibody) at dilution 1/20.



The image on the left is immunohistochemistry of paraffin-embedded Human brain tissue using 215972(Anti-HPDL Antibody) at a dilution of 1/20.



In comparison with the IHC on the left, the same paraffin-embedded Human brain tissue is first treated with synthetic peptide and then with D164214(Anti-HPDL Antibody) at dilution 1/20.



Product Description

Pioneering GTPase and Oncogene Product Development since 2010
