

HPCA RABBIT PAB

货号: S222179

产品全名: HPCA 兔多抗

基因符号 BDR2; DYT2

UNIPROT ID: P84074 (Gene Accession - NP_002134)

背景: The protein encoded by this gene is a member of neuron-specific calcium-binding proteins family found in the retina and brain. This protein is associated with the plasma membrane. It has similarities to proteins located in the photoreceptor cells that regulate photosignal transduction in a calcium-sensitive manner. This protein displays recoverin activity and a calcium-dependent inhibition of rhodopsin kinase. It is identical to the rat and mouse hippocalcin proteins and thought to play an important role in neurons of the central nervous system in a number of species.

抗原: Synthetic peptide of human HPCA

经过测试的应用: ELISA, IHC

推荐稀释比: IHC: 50-300; ELISA: 5000-10000

种属反应性: Rabbit

克隆性: Rabbit Polyclonal

亚型: Immunogen-specific rabbit IgG

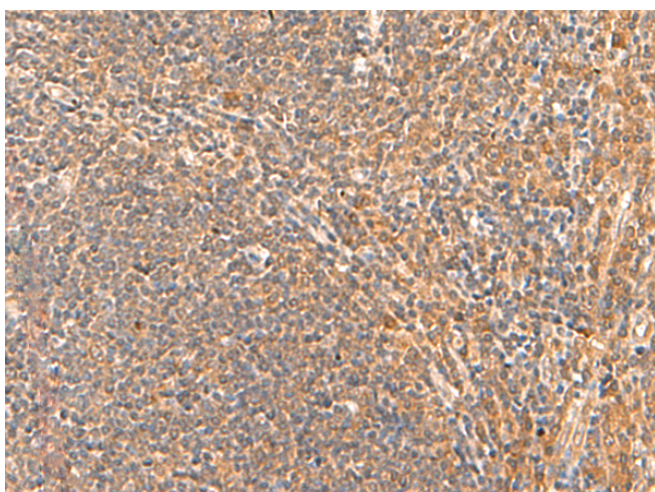
纯化: Antigen affinity purification

种属反应性: Human, Mouse, Rat

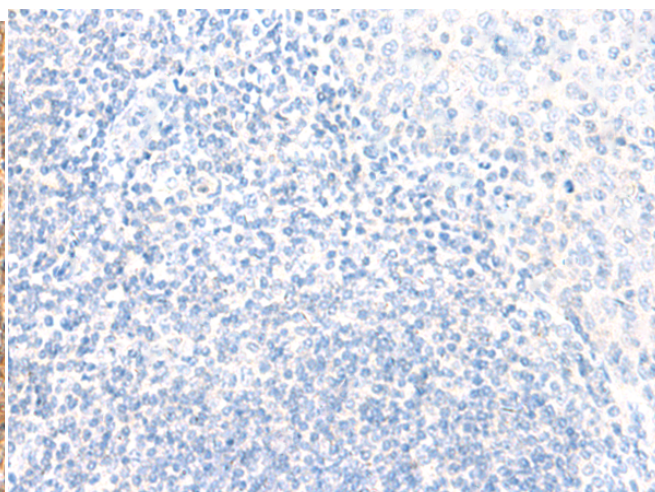
成分: PBS (without Mg²⁺ and Ca²⁺), pH 7.4, 150 mM NaCl, 0.05% Sodium Azide and 40% glycerol

研究领域: Neuroscience

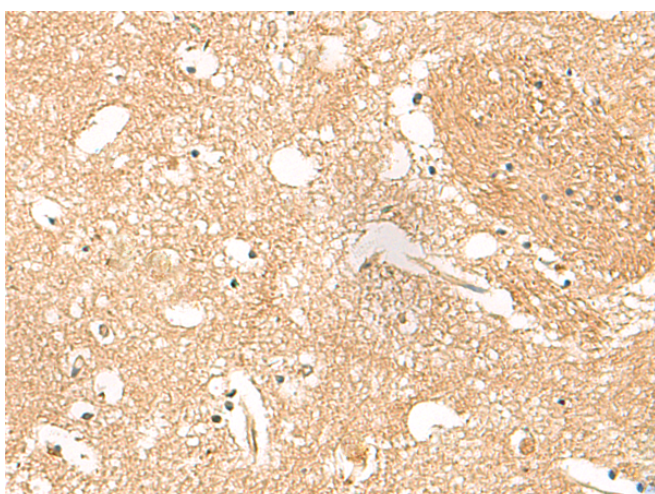
储存和运输: Store at -20°C. Avoid repeated freezing and thawing



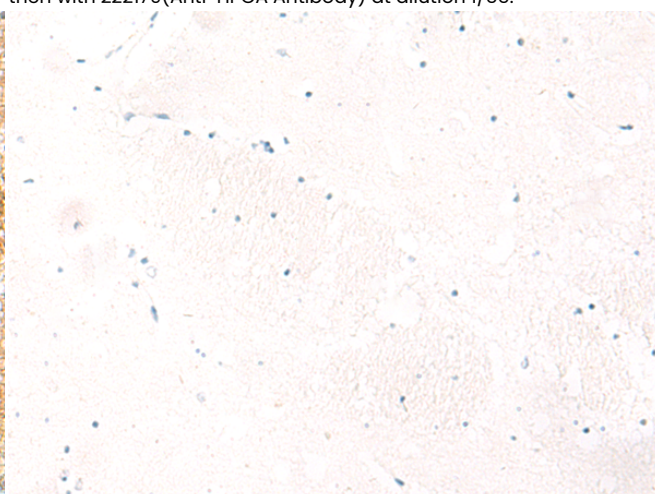
Immunohistochemistry analysis of paraffin embedded Human tonsil tissue using 222179(HPCA Antibody) at a dilution of 1/55(Cytoplasm).



In comparison with the IHC on the left, the same paraffin-embedded Human tonsil tissue is first treated with the synthetic peptide and then with 222179(Anti-HPCA Antibody) at dilution 1/55.



The image on the left is immunohistochemistry of paraffin-embedded Human brain tissue using 222179(Anti-HPCA Antibody) at a dilution of 1/55.



In comparison with the IHC on the left, the same paraffin-embedded Human brain tissue is first treated with synthetic peptide and then with D264180(Anti-HPCA Antibody) at dilution 1/55.



Product Description

Pioneering GTPase and Oncogene Product Development since 2010
