

HP1 ALPHA RABBIT MAB

货号: N262357

产品全名: HP1 alpha 兔单克隆抗体

基因符号 CBX5; HP1A; Chromobox protein homolog 5; Antigen p25; Heterochromatin protein 1 homolog alpha; HP1 alpha

UNIPROT ID: P45973

背景: Component of heterochromatin that recognizes and binds histone H3 tails methylated at 'Lys-9' (H3K9me), leading to epigenetic repression. In contrast, it is excluded from chromatin when 'Tyr-41' of histone H3 is phosphorylated (H3Y41ph). Can interact with lamin-B receptor (LBR). This interaction can contribute to the association of the heterochromatin with the inner nuclear membrane. Involved in the formation of functional kinetochore through interaction with MIS12 complex proteins.

抗原: A synthetic peptide of human HP1 alpha

经过测试的应用: WB,IHC-F,IHC-P,ICC/IF,IP

推荐稀释比: WB: 1/500-1/1000 IHC: 1/50-1/100 IF: 1/50-1/200 IP: 1/20

种属反应性: Rabbit

克隆性: Rabbit Monoclonal

克隆编号: R09-9D5

分子量: Calculated MW: 22 kDa; Observed MW: 22 kDa

亚型: IgG

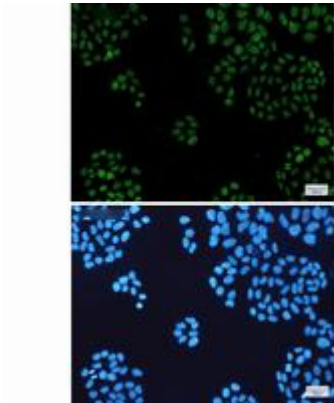
纯化: Affinity Purified

种属反应性: Human, Mouse and Rat

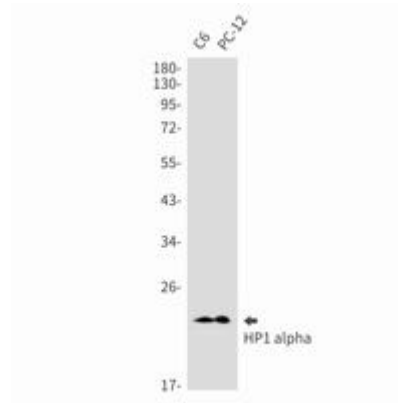
成分: PBS (without Mg²⁺ and Ca²⁺), pH 7.3 containing 50% glycerol, 0.5% BSA and 0.02% sodium azide

研究领域: Epigenetics and Nuclear Signaling

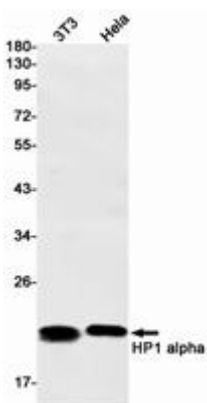
储存和运输: Store at -20°C. Avoid repeated freezing and thawing



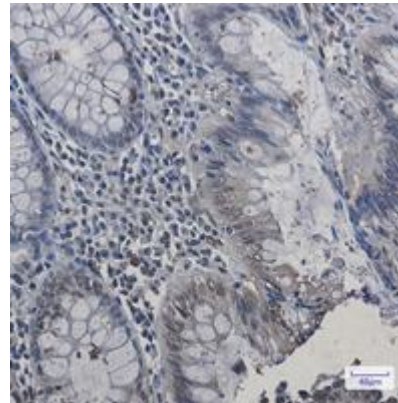
Immunocytochemistry analysis of HP1 alpha (green) in HeLa using HP1 alpha antibody, and DAPI (blue)



Western blot analysis of HP1 alpha in C6, PC-12 lysates using HP1 alpha antibody.



Western blot analysis of HP1 alpha in 3T3, HeLa lysates using HP1 alpha antibody.



Immunohistochemistry analysis of paraffin-embedded Human colon cancer using HP1 alpha antibody. High-pressure and temperature Sodium Citrate pH 6.0 was used for antigen retrieval.