

## HP1 ALPHA (3G2) MOUSE MAB

货号: N261010

产品全名: HP1 alpha (3G2) 小鼠单抗

基因符号 CBX5; HP1A; Chromobox protein homolog 5; Antigen p25;  
Heterochromatin protein 1 homolog alpha; HP1 alpha

**UNIPROT ID:** P45973

**背景:** Component of heterochromatin that recognizes and binds histone H3 tails methylated at 'Lys-9' (H3K9me), leading to epigenetic repression. In contrast, it is excluded from chromatin when 'Tyr-41' of histone H3 is phosphorylated (H3Y41ph). Can interact with lamin-B receptor (LBR). This interaction can contribute to the association of the heterochromatin with the inner nuclear membrane. Involved in the formation of functional kinetochore through interaction with MIS12 complex proteins.

**抗原:** Purified recombinant human HP1 alpha protein fragments expressed in E.coli.

**经过测试的应用:** WB,IHC-F,IHC-P,ICC/IF

**推荐稀释比:** WB: 1/500-1/1000 IHC: 1/50-1/100 IF: 1/50-1/200

**种属反应性:** Mouse

**克隆性:** Mouse Monoclonal

**克隆编号:** 3G2-H10-A6

**分子量:** Calculated MW: 22 kDa; Observed MW: 26 kDa

**亚型:** IgG2b

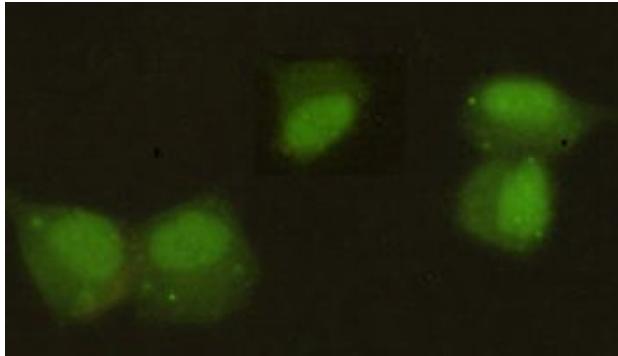
**纯化:** Affinity Purified

**种属反应性:** Human, Mouse and Rat

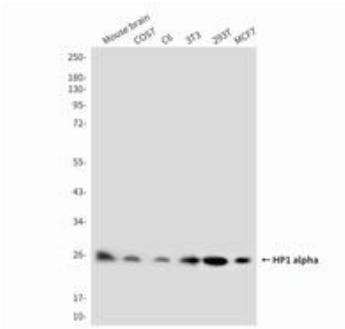
**成分:** PBS (without Mg<sup>2+</sup> and Ca<sup>2+</sup>), pH 7.3 containing 50% glycerol, 0.5% BSA and 0.02% sodium azide

**研究领域:** Epigenetics and Nuclear Signaling

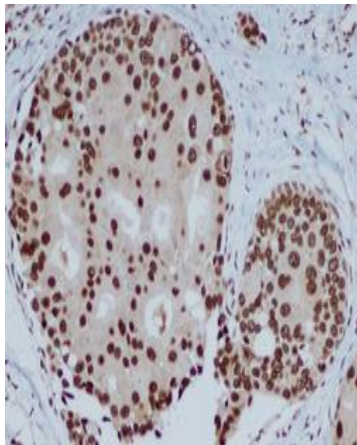
**储存和运输:** Store at -20°C. Avoid repeated freezing and thawing



Immunocytochemistry analysis of HP1 alpha (3G2) in HeLa using HP1 alpha antibody.



Western blot analysis of HP1 alpha in MCF-7, 293T, 3T3, C6, COS7 and mouse brain lysates using HP1 alpha antibody.



Immunohistochemistry analysis of paraffin-embedded Human breast carcinoma using HP1 alpha antibody (3G2). High-pressure and temperature Sodium Citrate pH 6.0 was used for antigen retrieval.