

## HOXC11 RABBIT PAB

货号: S221367

产品全名: HOXC11 兔多抗

基因符号: HOX3H

**UNIPROT ID:** O43248 (Gene Accession - NP\_055027)

**背景:** This gene is one of several homeobox HOXC genes located in a cluster on chromosome 12. The product of this gene binds to a promoter element of the lactase-phlorizin hydrolase. It also may play a role in early intestinal development. An alternatively spliced variant encoding a shorter isoform has been described but its full-length nature has not been determined.

**抗原:** Synthetic peptide of human HOXC11

**经过测试的应用:** ELISA, WB, IHC

**推荐稀释比:** IHC: 20-100;WB: 500-2000;ELISA: 5000-10000

**种属反应性:** Rabbit

**克隆性:** Rabbit Polyclonal

**亚型:** Immunogen-specific rabbit IgG

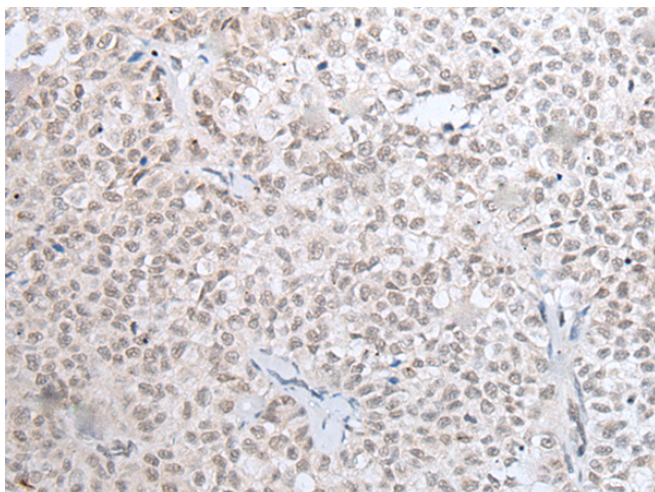
**纯化:** Antigen affinity purification

**种属反应性:** Human, Mouse

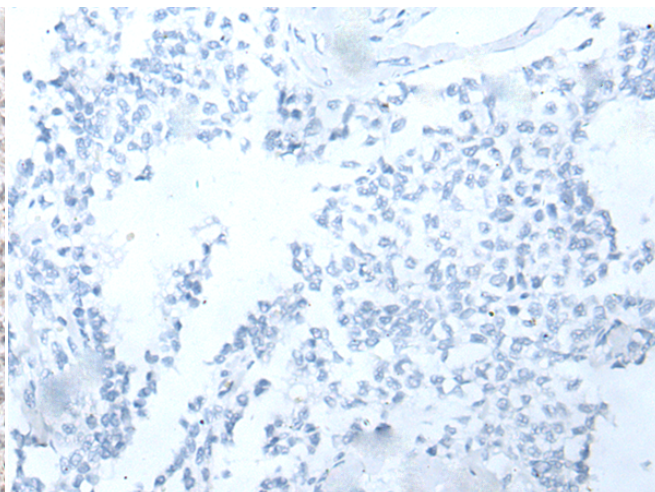
**成分:** PBS (without Mg<sup>2+</sup> and Ca<sup>2+</sup>), pH 7.4, 150 mM NaCl, 0.05% Sodium Azide and 40% glycerol

**研究领域:** Epigenetics and Nuclear Signaling

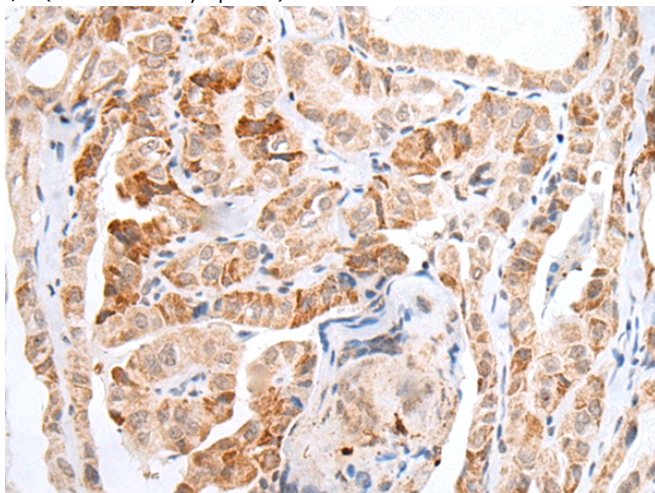
**储存和运输:** Store at -20°C. Avoid repeated freezing and thawing



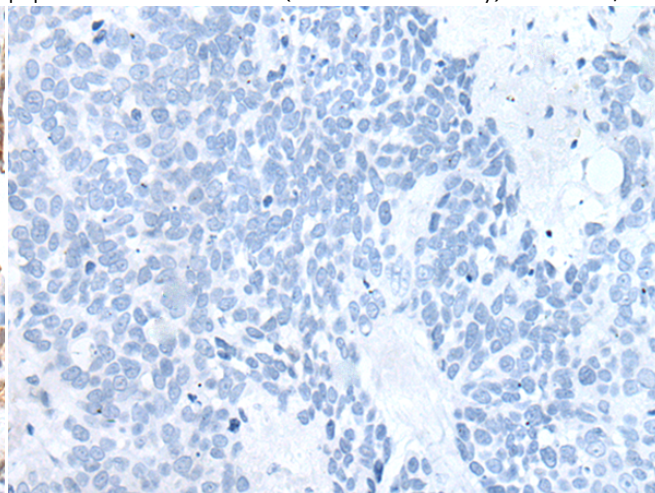
Immunohistochemistry analysis of paraffin embedded Human ovarian cancer tissue using 221367(HOXC11 Antibody) at a dilution of 1/25(Nucleus and Cytoplasm).



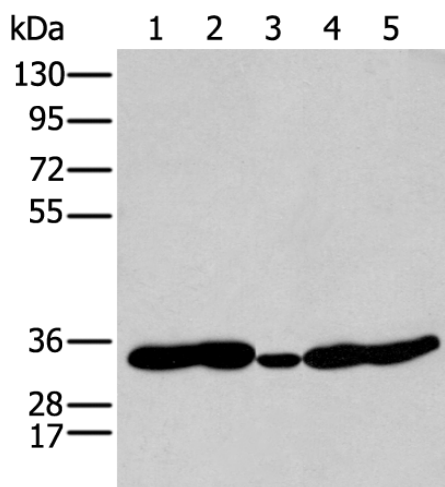
In comparison with the IHC on the left, the same paraffin-embedded Human ovarian cancer tissue is first treated with the synthetic peptide and then with 221367(Anti-HOXC11 Antibody) at dilution 1/25.



The image on the left is immunohistochemistry of paraffin-embedded Human thyroid cancer tissue using 221367(Anti-HOXC11 Antibody) at a dilution of 1/25.



In comparison with the IHC on the left, the same paraffin-embedded Human thyroid cancer tissue is first treated with synthetic peptide and then with D262925(Anti-HOXC11 Antibody) at dilution 1/25.



Gel: 8%SDS-PAGE, Lysate: 40 µg;  
 Lane 1-5: 231, Mouse heart tissue, Human fetal brain tissue, Jurkat and Hepg2 cell;  
 Primary antibody: 221367(HOXC11 Antibody) at dilution 1/250;  
 Secondary antibody: Goat anti rabbit IgG at 1/8000 dilution;  
 Exposure time: 10 seconds



# Product Description

Pioneering GTPase and Oncogene Product Development since 2010

---