

## HNRNPA1L2 RABBIT PAB

货号: S222175

产品全名: HNRNPA1L2 兔多抗

基因符号

**UNIPROT ID:** Q32P51 (Gene Accession - NP\_001011724)

**背景:** Involved in the packaging of pre-mRNA into hnRNP particles, transport of poly(A) mRNA from the nucleus to the cytoplasm and may modulate splice site selection.

**抗原:** Synthetic peptide of human HNRNPA1L2

**经过测试的应用:** ELISA, WB, IHC

**推荐稀释比:** IHC: 20-100;WB: 500-2000;ELISA: 5000-10000

**种属反应性:** Rabbit

**克隆性:** Rabbit Polyclonal

**亚型:** Immunogen-specific rabbit IgG

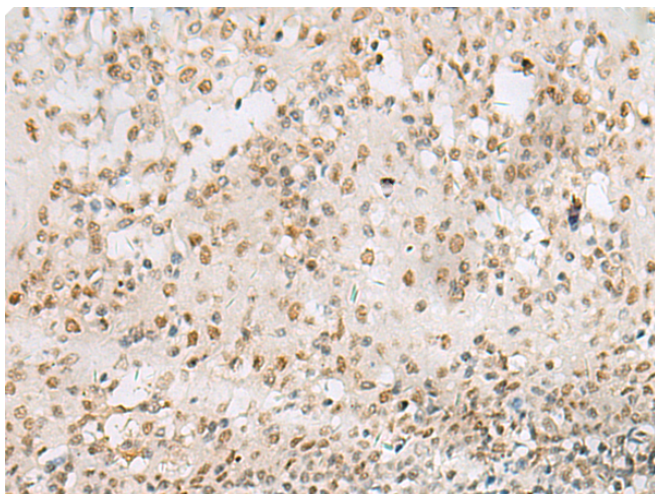
**纯化:** Antigen affinity purification

**种属反应性:** Human

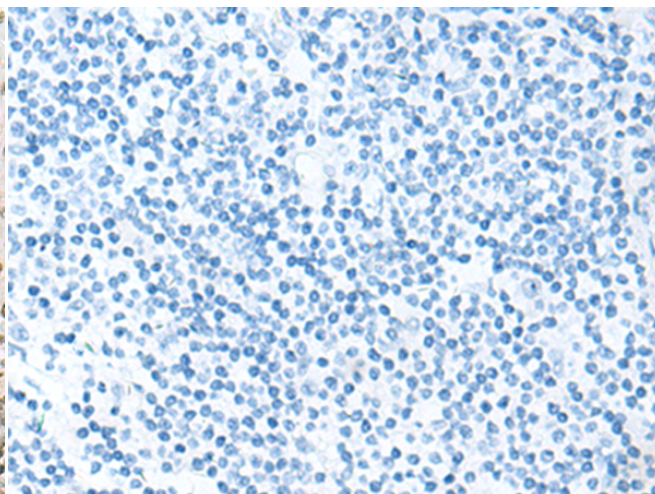
**成分:** PBS (without Mg<sup>2+</sup> and Ca<sup>2+</sup>), pH 7.4, 150 mM NaCl, 0.05% Sodium Azide and 40% glycerol

**研究领域:** Epigenetics and Nuclear Signaling

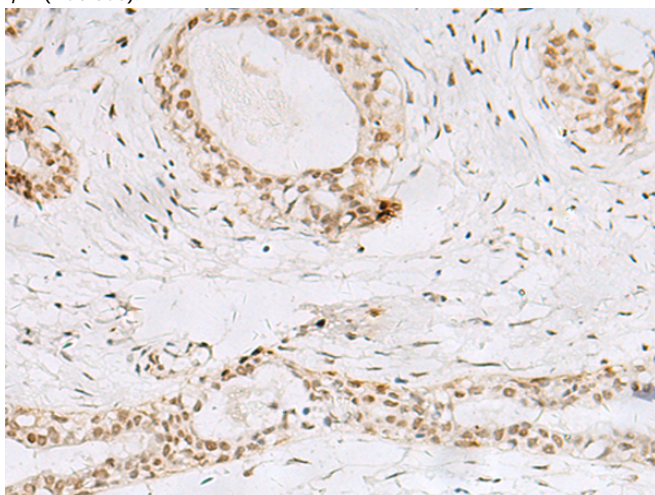
**储存和运输:** Store at -20°C. Avoid repeated freezing and thawing



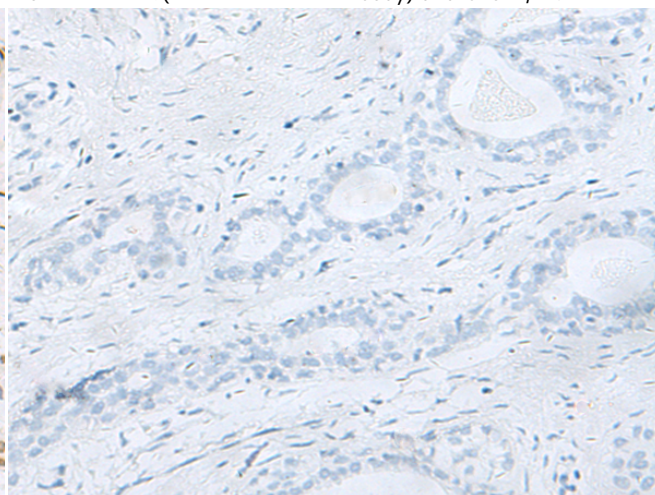
Immunohistochemistry analysis of paraffin embedded Human tonsil tissue using 222175(HNRNPAIL2 Antibody) at a dilution of 1/20(Nucleus).



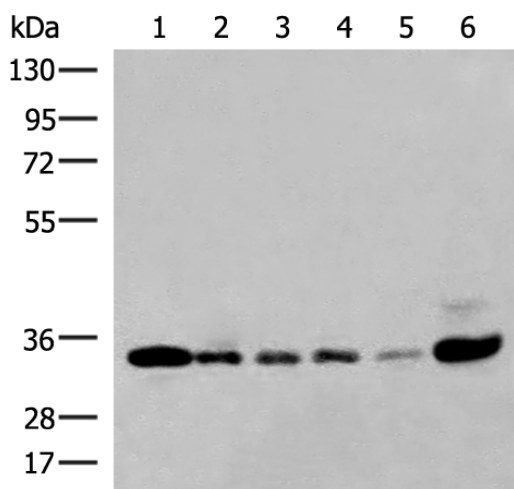
In comparison with the IHC on the left, the same paraffin-embedded Human tonsil tissue is first treated with the synthetic peptide and then with 222175(Anti-HNRNPAIL2 Antibody) at dilution 1/20.



The image on the left is immunohistochemistry of paraffin-embedded Human breast cancer tissue using 222175(Anti-HNRNPAIL2 Antibody) at a dilution of 1/20.



In comparison with the IHC on the left, the same paraffin-embedded Human breast cancer tissue is first treated with synthetic peptide and then with D264172(Anti-HNRNPAIL2 Antibody) at dilution 1/20.



Gel: 8%SDS-PAGE, Lysate: 40 µg;  
 Lane 1-6: 293T, K562, HepG2, 231, Hela and Jurkat cell lysates;  
 Primary antibody: 222175(HNRNPAIL2 Antibody) at dilution 1/250;  
 Secondary antibody: Goat anti rabbit IgG at 1/8000 dilution;  
 Exposure time: 1 minute



# Product Description

Pioneering GTPase and Oncogene Product Development since 2010

---