

## HMGCs1 RABBIT PAB

货号: S220601

产品全名: HMGCs1 兔多抗

基因符号: HMGCs

**UNIPROT ID:** Q01581 (Gene Accession - NP\_001091742)

**背景:** HMG-CoA Synthase exists as both a mitochondrial (mHMGCs) and cytoplasmic (cHMGCs) enzyme that condenses acetyl-CoA with acetoacetyl-CoA to form HMG-CoA. The HMG-CoA produced by cHMGCs is transformed into mevalonate by HMG-CoA reductase, which starts isoprenoid biosynthesis. End products of the isoprenoid pathway include cholesterol, ubiquinone, dolichol, isopentenyl adenosine and farnesyl groups. mHMGCs, together with HMG-CoA Lyase, is responsible for ketone body biosynthesis. mHMGCs is expressed in liver and kidney. Fasting, cAMP and fatty acids increase the level of transcription of mHMGCs, while feeding and insulin repress it. A regulatory element within the mHMGCs promoter confers transcriptional regulation by PPAR, RXR, COUP-TF and HNF-4.

**抗原:** Synthetic peptide of human HMGCs1

**经过测试的应用:** ELISA, IHC

**推荐稀释比:** IHC: 50-200; ELISA: 2000-5000

**种属反应性:** Rabbit

**克隆性:** Rabbit Polyclonal

**亚型:** Immunogen-specific rabbit IgG

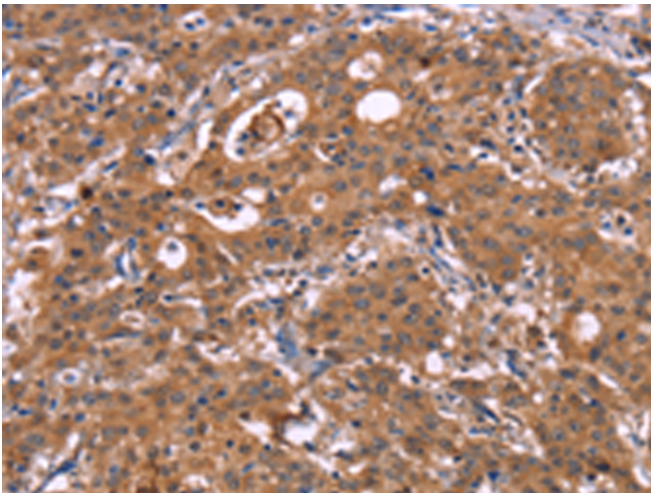
**纯化:** Antigen affinity purification

**种属反应性:** Human

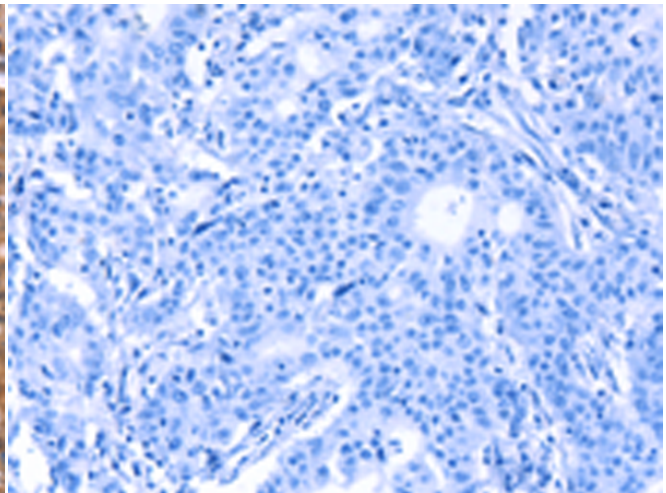
**成分:** PBS (without Mg<sup>2+</sup> and Ca<sup>2+</sup>), pH 7.4, 150 mM NaCl, 0.05% Sodium Azide and 40% glycerol

**研究领域:** Metabolism, Cancer, Cardiovascular

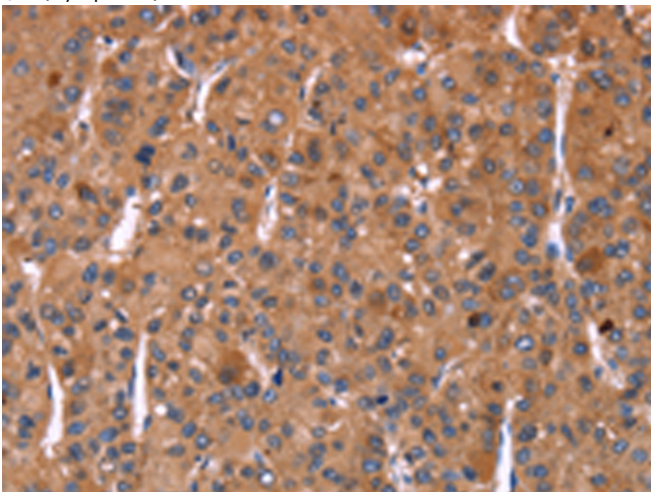
**储存和运输:** Store at -20°C. Avoid repeated freezing and thawing



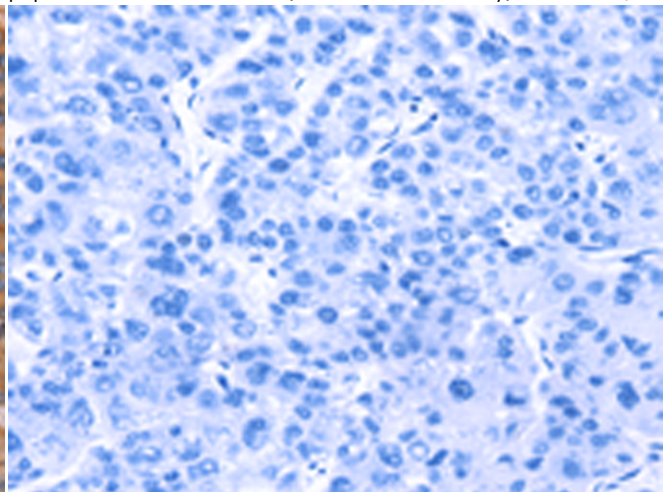
Immunohistochemistry analysis of paraffin embedded Human gastric cancer tissue using 220601(HMGCs1 Antibody) at a dilution of 1/40(Cytoplasm).



In comparison with the IHC on the left, the same paraffin-embedded Human gastric cancer tissue is first treated with the synthetic peptide and then with 220601(Anti-HMGCs1 Antibody) at dilution 1/40.



The image on the left is immunohistochemistry of paraffin-embedded Human liver cancer tissue using 220601(Anti-HMGCs1 Antibody) at a dilution of 1/40.



In comparison with the IHC on the left, the same paraffin-embedded Human liver cancer tissue is first treated with synthetic peptide and then with D261746(Anti-HMGCs1 Antibody) at dilution 1/40.



# Product Description

Pioneering GTPase and Oncogene Product Development since 2010

---