

## HMGB1 RABBIT PAB

货号: S219852

产品全名: HMGB1 兔多抗

基因符号: HMGI; HMG3; HMG-1; SBP-1

**UNIPROT ID:** P09429 (Gene Accession - NP\_002119)

**背景:** This gene encodes a protein that belongs to the High Mobility Group-box superfamily. The encoded non-histone, nuclear DNA-binding protein regulates transcription, and is involved in organization of DNA. This protein plays a role in several cellular processes, including inflammation, cell differentiation and tumor cell migration. Multiple pseudogenes of this gene have been identified. Alternative splicing results in multiple transcript variants that encode the same protein.

**抗原:** Synthetic peptide of human HMGB1

**经过测试的应用:** ELISA, WB, IHC

**推荐稀释比:** IHC: 50-200; WB: 1000-5000; ELISA: 5000-10000

**种属反应性:** Rabbit

**克隆性:** Rabbit Polyclonal

**亚型:** Immunogen-specific rabbit IgG

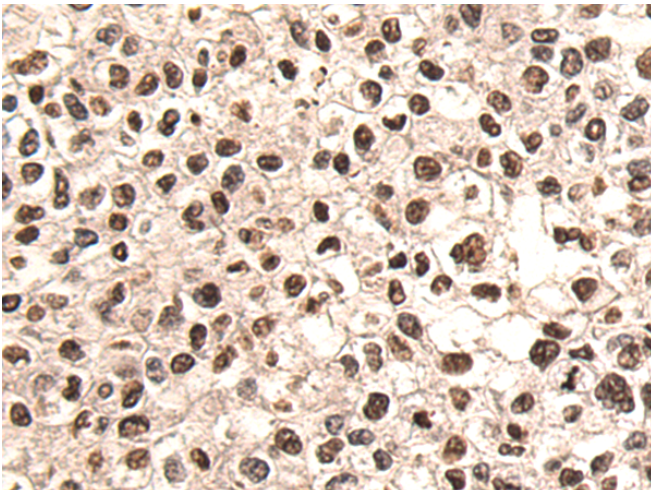
**纯化:** Antigen affinity purification

**种属反应性:** Human, Mouse, Rat

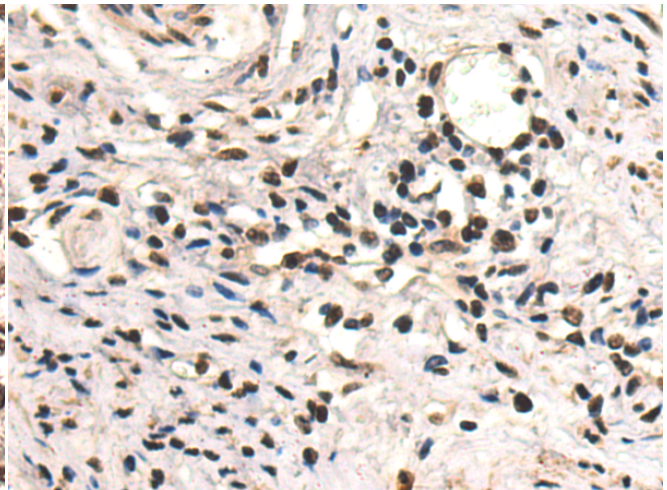
**成分:** PBS (without Mg<sup>2+</sup> and Ca<sup>2+</sup>), pH 7.4, 150 mM NaCl, 0.05% Sodium Azide and 40% glycerol

**研究领域:** Epigenetics and Nuclear Signaling

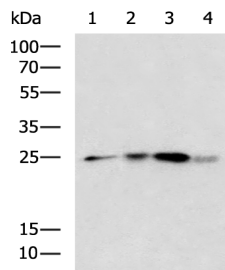
**储存和运输:** Store at -20°C. Avoid repeated freezing and thawing



Immunohistochemistry analysis of paraffin-embedded Human liver cancer tissue using 219852(HMGB1 Antibody) at a dilution of 1/50(Nucleus).



Immunohistochemistry analysis of paraffin-embedded Human cervical cancer tissue using 219852(Anti-HMGB1 Antibody) at a dilution of 1/50.



Gel: 12%SDS-PAGE, Lysate: 40 µg;

Lane 1-4: Human 2-3 grade invasive ductal breast tissue, LO2, 293T, Jurkat cell lysates;

Primary antibody: 219852(HMGB1 Antibody) at dilution 1/1200;

Secondary antibody: HRP-conjugated Goat anti rabbit IgG at 1/5000 dilution;

Exposure time: 3 seconds