

## HMBOX1 RABBIT PAB

货号: S219049

产品全名: HMBOX1 兔多抗

基因符号: HOT1; PBHNF; HNFILA

**UNIPROT ID:** Q6NT76 (Gene Accession - BC009259)

背景: Transcription factor. Ubiquitous. Detected in pancreas, brain, spleen, placenta, prostate, thymus, liver, heart, bone marrow, skeletal muscle, stomach, uterus, testis, kidney, ovary, and colon.

抗原: Fusion protein of human HMBOX1

经过测试的应用: ELISA, WB, IHC

推荐稀释比: IHC: 40-200; WB: 500-2000; ELISA: 5000-10000

种属反应性: Rabbit

克隆性: Rabbit Polyclonal

亚型: Immunogen-specific rabbit IgG

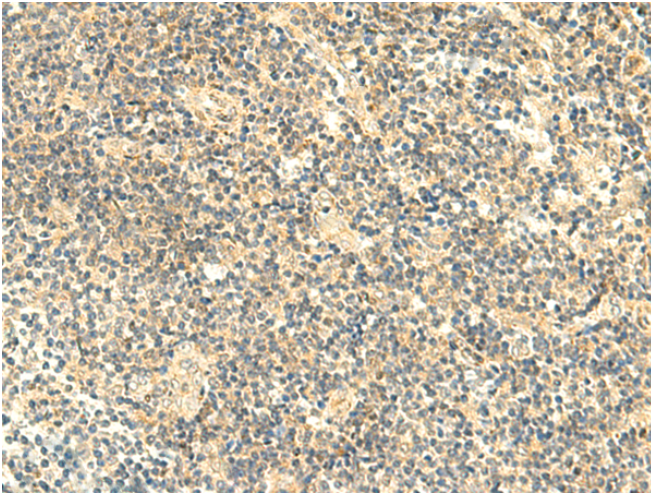
纯化: Antigen affinity purification

种属反应性: Human, Mouse

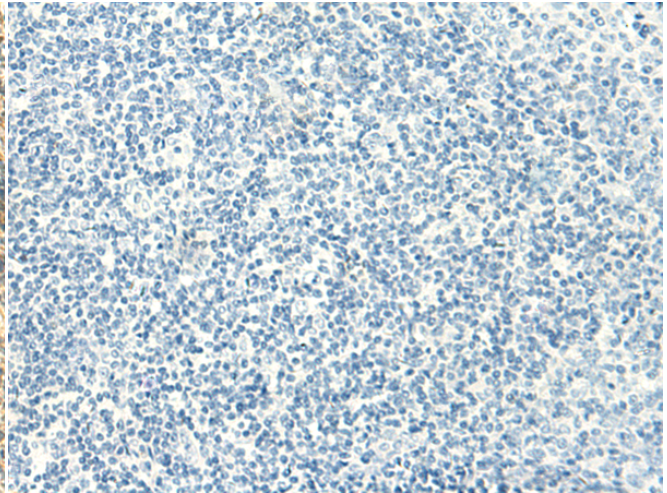
成分: PBS (without Mg<sup>2+</sup> and Ca<sup>2+</sup>), pH 7.4, 150 mM NaCl, 0.05% Sodium Azide and 40% glycerol

研究领域: Epigenetics and Nuclear Signaling

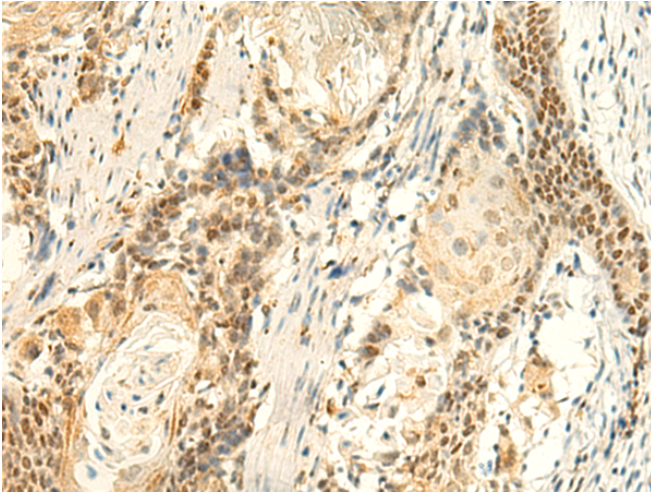
储存和运输: Store at -20°C. Avoid repeated freezing and thawing



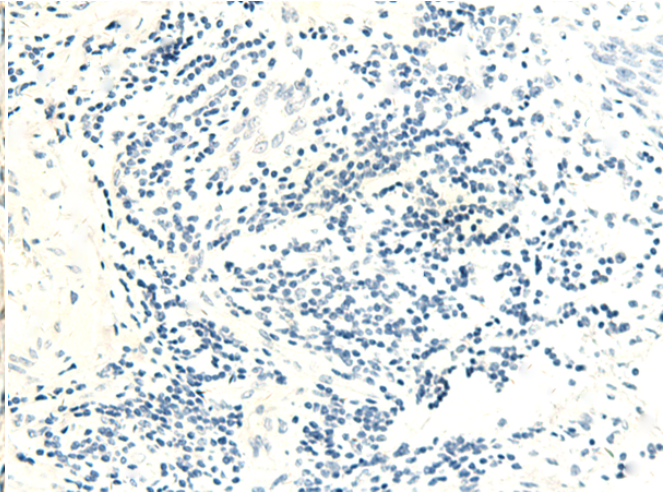
Immunohistochemistry analysis of paraffin embedded Human tonsil tissue using 219049 (HMBOX1 Antibody) at a dilution of 1/50 (Cytoplasm or Nucleus).



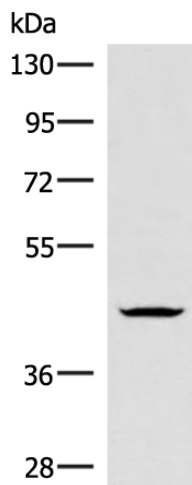
In comparison with the IHC on the left, the same paraffin-embedded Human tonsil tissue is first treated with the fusion protein and then with 219049 (Anti-HMBOX1 Antibody) at dilution 1/50.



The image on the left is immunohistochemistry of paraffin-embedded Human esophagus cancer tissue using 219049 (Anti-HMBOX1 Antibody) at a dilution of 1/50.



In comparison with the IHC on the left, the same paraffin-embedded Human esophagus cancer tissue is first treated with fusion protein and then with D225719 (Anti-HMBOX1 Antibody) at dilution 1/50.



Gel: 8% SDS-PAGE, Lysate: 40 µg;  
Lane: Jurkat cell lysate;  
Primary antibody: 219049 (HMBOX1 Antibody) at dilution 1/300;  
Secondary antibody: Goat anti rabbit IgG at 1/8000 dilution;  
Exposure time: 20 seconds



# Product Description

Pioneering GTPase and Oncogene Product Development since 2010

---