

HLA-DRB3 RABBIT PAB

货号: S222186

产品全名: HLA-DRB3 兔多抗

基因符号 HLA-DRB1; HLA-DR3B

UNIPROT ID: P79483 (Gene Accession - NP_072049)

背景: HLA-DRB3 belongs to the HLA class II beta chain paralogues. This class II molecule is a heterodimer consisting of an alpha (DRA) and a beta (DRB) chain, both anchored in the membrane. It plays a central role in the immune system by presenting peptides derived from extracellular proteins. Class II molecules are expressed in antigen presenting cells (APC: B lymphocytes, dendritic cells, macrophages). The beta chain is approximately 26-28 kDa and its gene contains 6 exons. Exon one encodes the leader peptide, exons 2 and 3 encode the two extracellular domains, exon 4 encodes the transmembrane domain and exon 5 encodes the cytoplasmic tail. Within the DR molecule the beta chain contains all the polymorphisms specifying the peptide binding specificities. Typing for these polymorphisms is routinely done for bone marrow and kidney transplantation. DRB1 is expressed at a level five times higher than its paralogues DRB3, DRB4 and DRB5. The presence of DRB3 is linked with allelic variants of DRB1, otherwise it is omitted. There are 4 related pseudogenes: DRB2, DRB6, DRB7, DRB8 and DRB9.

抗原: Synthetic peptide of human HLA-DRB3

经过测试的应用: ELISA, WB, IHC

推荐稀释比: IHC: Oct-50;WB: 300-1000;ELISA: 5000-10000

种属反应性: Rabbit

克隆性: Rabbit Polyclonal

亚型: Immunogen-specific rabbit IgG

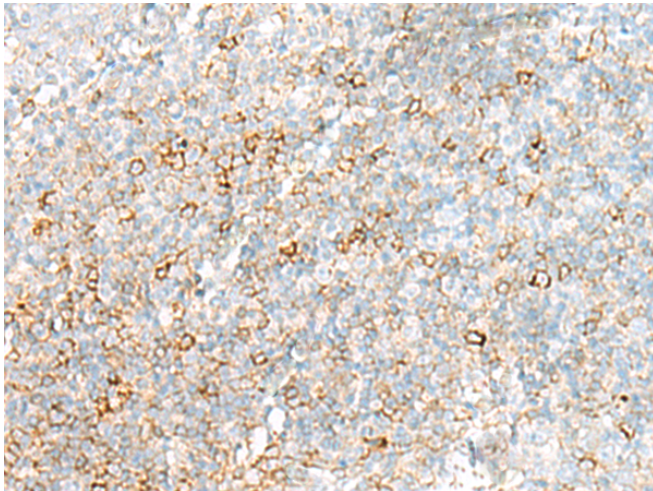
纯化: Antigen affinity purification

种属反应性: Human

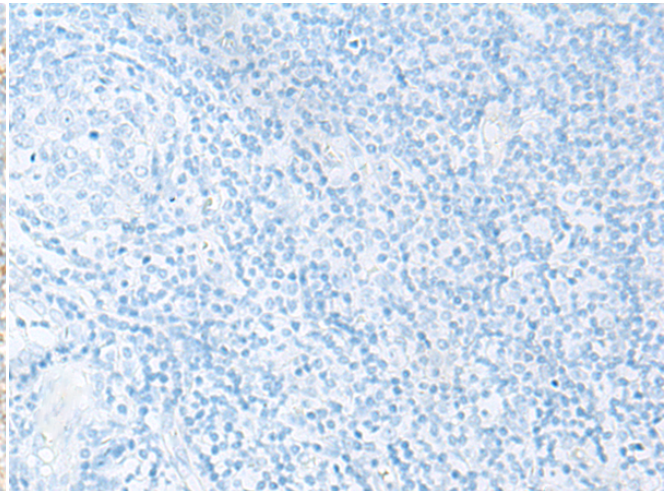
成分: PBS (without Mg²⁺ and Ca²⁺), pH 7.4, 150 mM NaCl, 0.05% Sodium Azide and 40% glycerol

研究领域: Immunology

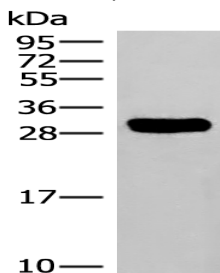
储存和运输: Store at -20°C. Avoid repeated freezing and thawing



Immunohistochemistry analysis of paraffin embedded Human tonsil tissue using 222186 (HLA-DRB3 Antibody) at a dilution of 1/25 (Cell membrane).



In comparison with the IHC on the left, the same paraffin-embedded Human tonsil tissue is first treated with the synthetic peptide and then with 222186 (Anti-HLA-DRB3 Antibody) at dilution 1/25.



Gel: 12% SDS-PAGE, Lysate: 40 µg;

Lane: Raji cell lysate;

Primary antibody: 222186 (HLA-DRB3 Antibody) at dilution 1/320;

Secondary antibody: Goat anti rabbit IgG at 1/8000 dilution;

Exposure time: 3 minutes

