

HLA-DRB1 RABBIT PAB

货号: S218855

产品全名: HLA-DRB1 兔多抗

基因符号 SSI; DRB1; HLA-DRB; HLA-DR1B

UNIPROT ID: Q5Y7A7 (Gene Accession - BC007920)

背景: HLA-DRB1 belongs to the HLA class II beta chain paralogs. The class II molecule is a heterodimer consisting of an alpha (DRA) and a beta chain (DRB), both anchored in the membrane. It plays a central role in the immune system by presenting peptides derived from extracellular proteins. Class II molecules are expressed in antigen presenting cells (APC: B lymphocytes, dendritic cells, macrophages). The beta chain is approximately 26-28 kDa. It is encoded by 6 exons. Exon one encodes the leader peptide; exons 2 and 3 encode the two extracellular domains; exon 4 encodes the transmembrane domain; and exon 5 encodes the cytoplasmic tail. Within the DR molecule the beta chain contains all the polymorphisms specifying the peptide binding specificities. Hundreds of DRB1 alleles have been described and typing for these polymorphisms is routinely done for bone marrow and kidney transplantation. DRB1 is expressed at a level five times higher than its paralogs DRB3, DRB4 and DRB5. DRB1 is present in all individuals. Allelic variants of DRB1 are linked with either none or one of the genes DRB3, DRB4 and DRB5. There are 4 related pseudogenes: DRB2, DRB6, DRB7, DRB8 and DRB9.

抗原: Fusion protein of human HLA-DRB1

经过测试的应用: ELISA, WB, IHC

推荐稀释比: IHC: 50-300;WB: 500-2000;ELISA: 5000-10000

种属反应性: Rabbit

克隆性: Rabbit Polyclonal

亚型: Immunogen-specific rabbit IgG

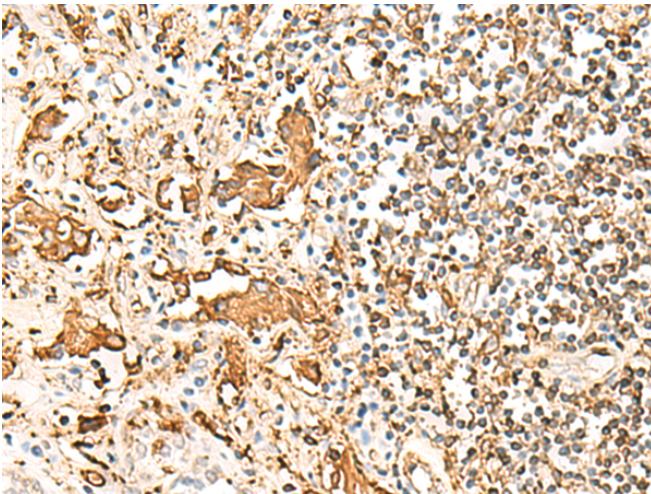
纯化: Antigen affinity purification

种属反应性: Human

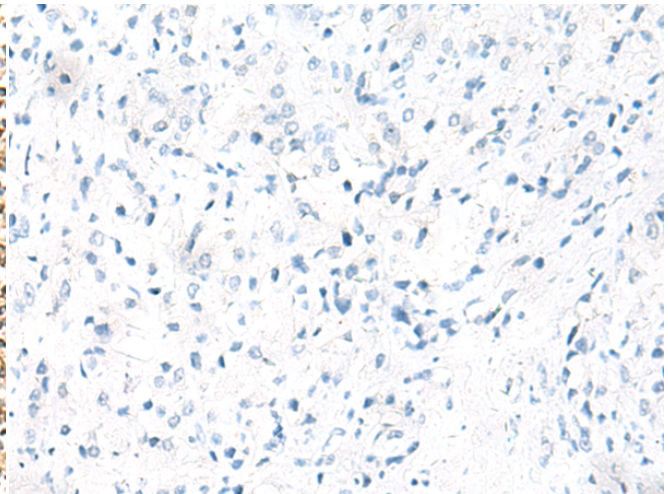
成分: PBS (without Mg²⁺ and Ca²⁺), pH 7.4, 150 mM NaCl, 0.05% Sodium Azide and 40% glycerol

研究领域: Immunology

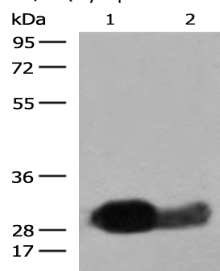
储存和运输: Store at -20°C. Avoid repeated freezing and thawing



Immunohistochemistry analysis of paraffin embedded Human prostate cancer tissue using 218855 (HLA-DRB1 Antibody) at a dilution of 1/75 (Cytoplasm and Cell membrane).



In comparison with the IHC on the left, the same paraffin-embedded Human prostate cancer tissue is first treated with the fusion protein and then with 218855 (Anti-HLA-DRB1 Antibody) at dilution 1/75.



Gel: 8%SDS-PAGE, Lysate: 40 µg;

Lane 1-2: Raji cell, Human spleen tissue lysates;

Primary antibody: 218855 (HLA-DRB1 Antibody) at dilution 1/550;

Secondary antibody: Goat anti rabbit IgG at 1/8000 dilution;

Exposure time: 5 seconds



Product Description

Pioneering GTPase and Oncogene Product Development since 2010
