

HLA DQB1/2 RABBIT PAB

货号: N225039

产品全名: HLA DQB1/2 兔多抗

基因符号 HLA-DQB1; HLA-DQB; HLA class II histocompatibility antigen; DQ beta 1 chain; MHC class II antigen DQB1; HLA-DQB2; HLA-DXB; HLA class II histocompatibility antigen; DQ beta 2 chain; HLA class II histocompatibility antigen; DX beta chain; MHC class II antigen DQB2

UNIPROT ID: P01920/P05538

背景: Binds peptides derived from antigens that access the endocytic route of antigen presenting cells (APC) and presents them on the cell surface for recognition by the CD4 T-cells. The peptide binding cleft accommodates peptides of 10-30 residues. The peptides presented by MHC class II molecules are generated mostly by degradation of proteins that access the endocytic route, where they are processed by lysosomal proteases and other hydrolases.

抗原: The antiserum was produced against synthesized peptide derived from the Internal region of human HLA-DQB1/HLA-DQB2. AA range:131-180

经过测试的应用: WB,IHC-P,ELISA

推荐稀释比: WB: 1/500-1/1000 IHC: 1/50-1/100 ELISA: 1/10000

种属反应性: Rabbit

克隆性: Rabbit Polyclonal

分子量: Calculated MW: 30 kDa; Observed MW: 30 kDa

亚型: IgG

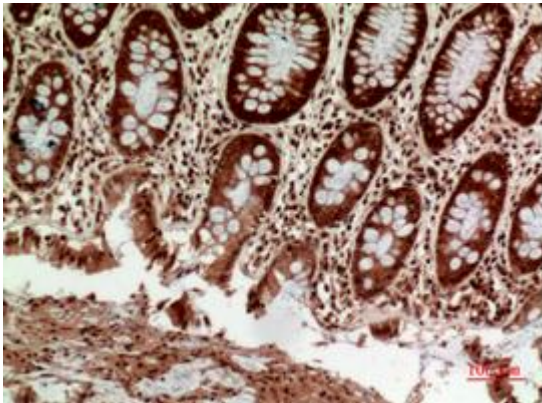
纯化: Affinity Purified

种属反应性: Human

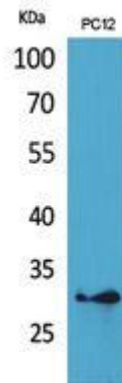
成分: PBS (without Mg²⁺ and Ca²⁺), pH 7.3 containing 50% glycerol, 0.5% BSA and 0.02% sodium azide

研究领域: Immunology

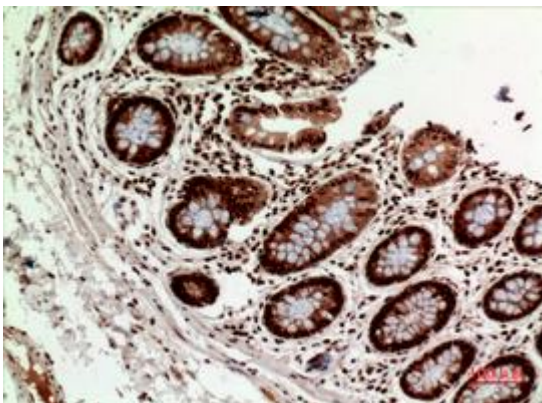
储存和运输: Store at -20°C. Avoid repeated freezing and thawing



Immunohistochemistry analysis of paraffin-embedded Human colon using HLA DQB1/2 antibody. High-pressure and temperature Sodium Citrate pH 6.0 was used for antigen retrieval.



Western blot analysis of HLA DQB1/2 in PC-12 lysates using HLA DQB1/2 antibody.



Immunohistochemistry analysis of paraffin-embedded Human colon using HLA DQB1/2 antibody. High-pressure and temperature Sodium Citrate pH 6.0 was used for antigen retrieval.



Immunohistochemistry analysis of paraffin-embedded Human spleen using HLA DQB1/2 antibody. High-pressure and temperature Sodium Citrate pH 6.0 was used for antigen retrieval.