

HLA-DPA1 RABBIT PAB

货号: S215956

产品全名: HLA-DPA1 兔多抗

基因符号: PLTI; HLADP; HLAB5; DP(W3); DP(W4); HLA-DPIA

UNIPROT ID: P20036 (Gene Accession - NP_291032)

背景: HLA-DPA1 belongs to the HLA class II alpha chain paralogues. This class II molecule is a heterodimer consisting of an alpha (DPA) and a beta (DPB) chain, both anchored in the membrane. It plays a central role in the immune system by presenting peptides derived from extracellular proteins. Class II molecules are expressed in antigen presenting cells (APC: B lymphocytes, dendritic cells, macrophages). The alpha chain is approximately 33-35 kDa and its gene contains 5 exons. Exon one encodes the leader peptide, exons 2 and 3 encode the two extracellular domains, exon 4 encodes the transmembrane domain and the cytoplasmic tail. Within the DP molecule both the alpha chain and the beta chain contain the polymorphisms specifying the peptide binding specificities, resulting in up to 4 different molecules.

抗原: Synthetic peptide of human HLA-DPA1

经过测试的应用: ELISA, WB, IHC

推荐稀释比: IHC: 40-200;WB: 500-2000;ELISA: 5000-10000

种属反应性: Rabbit

克隆性: Rabbit Polyclonal

亚型: Immunogen-specific rabbit IgG

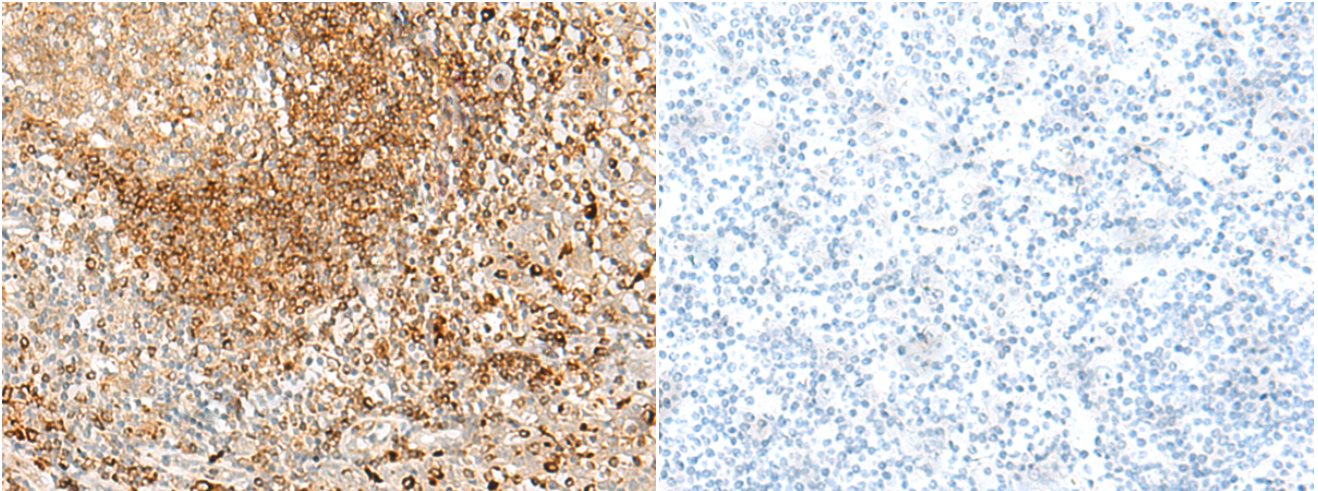
纯化: Antigen affinity purification

种属反应性: Human

成分: PBS (without Mg²⁺ and Ca²⁺), pH 7.4, 150 mM NaCl, 0.05% Sodium Azide and 40% glycerol

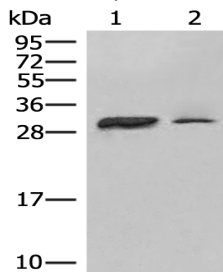
研究领域: Immunology

储存和运输: Store at -20°C. Avoid repeated freezing and thawing



Immunohistochemistry analysis of paraffin embedded Human tonsil tissue using 215956(HLA-DPA1 Antibody) at a dilution of 1/35(Cell membrane).

In comparison with the IHC on the left, the same paraffin-embedded Human tonsil tissue is first treated with the synthetic peptide and then with 215956(Anti-HLA-DPA1 Antibody) at dilution 1/35.



Gel: 12%SDS-PAGE, Lysate: 40 µg;

Lane 1-2: Raji cell, Human spleen tissue lysates;

Primary antibody: 215956(HLA-DPA1 Antibody) at dilution 1/400;

Secondary antibody: Goat anti rabbit IgG at 1/8000 dilution;

Exposure time: 1 minute