

HLA-DOA RABBIT PAB

货号: S219449

产品全名: HLA-DOA 兔多抗

基因符号: HLADZ; HLA-DNA; HLA-DZA

UNIPROT ID: P06340 (Gene Accession - BC013183)

背景: HLA-DOA belongs to the HLA class II alpha chain paralogues. HLA-DOA forms a heterodimer with HLA-DOB. The heterodimer, HLA-DO, is found in lysosomes in B cells and regulates HLA-DM-mediated peptide loading on MHC class II molecules. In comparison with classical HLA class II molecules, this gene exhibits very little sequence variation, especially at the protein level. [provided by RefSeq, Jul 2008]

抗原: Fusion protein of human HLA-DOA

经过测试的应用: ELISA, IHC

推荐稀释比: IHC: 150-300; ELISA: 5000-10000

种属反应性: Rabbit

克隆性: Rabbit Polyclonal

亚型: Immunogen-specific rabbit IgG

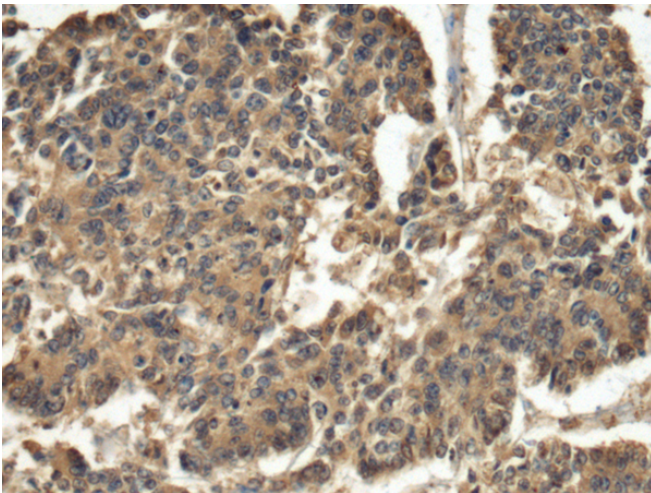
纯化: Antigen affinity purification

种属反应性: Human

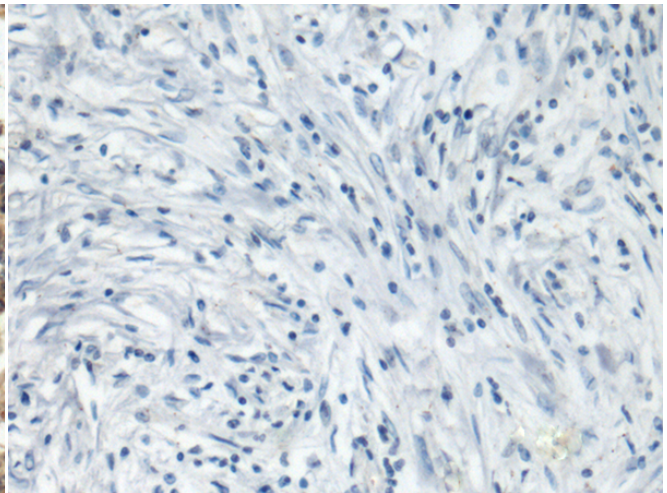
成分: PBS (without Mg²⁺ and Ca²⁺), pH 7.4, 150 mM NaCl, 0.05% Sodium Azide and 40% glycerol

研究领域: Immunology

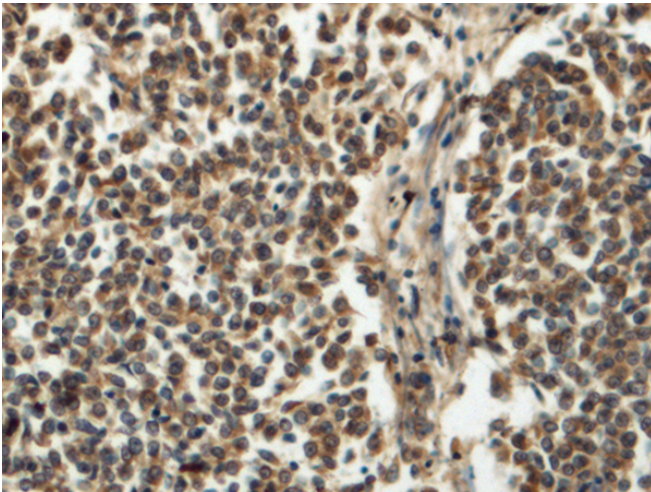
储存和运输: Store at -20°C. Avoid repeated freezing and thawing



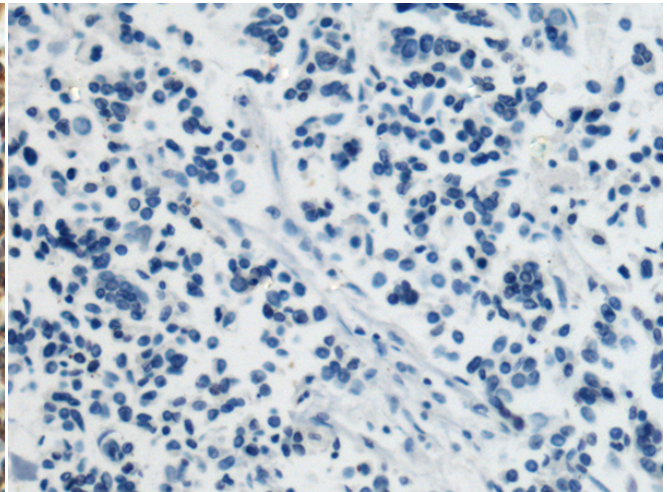
Immunohistochemistry analysis of paraffin embedded Human colorectal cancer tissue using 219449(HLA-DOA Antibody) at a dilution of 1/120(Cytoplasm).



In comparison with the IHC on the left, the same paraffin-embedded Human colorectal cancer tissue is first treated with the fusion protein and then with 219449(Anti-HLA-DOA Antibody) at dilution 1/120.



The image on the left is immunohistochemistry of paraffin-embedded Human breast cancer tissue using 219449(Anti-HLA-DOA Antibody) at a dilution of 1/120.



In comparison with the IHC on the left, the same paraffin-embedded Human breast cancer tissue is first treated with fusion protein and then with D227116(Anti-HLA-DOA Antibody) at dilution 1/120.

