

HLA C RABBIT MAB

货号: N262339

产品全名: HLA C 兔单克隆抗体

基因符号 MHC; HLAC; HLC-C; D6S204; PSORS1; HLA-JY3

UNIPROT ID: P10321

背景: Antigen-presenting major histocompatibility complex class I (MHCI) molecule with an important role in reproduction and antiviral immunity.

抗原: A synthetic peptide of human HLA-C

经过测试的应用: WB,IP

推荐稀释比: WB: 1/500-1/1000 IP: 1/20

种属反应性: Rabbit

克隆性: Rabbit Monoclonal

克隆编号: R08-5H3

分子量: Calculated MW: 41 kDa; Observed MW: 41 kDa

亚型: IgG

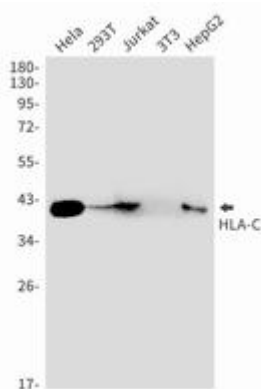
纯化: Affinity Purified

种属反应性: Human,Mouse

成分: PBS (without Mg²⁺ and Ca²⁺), pH 7.3 containing 50% glycerol, 0.5% BSA and 0.02% sodium azide

研究领域: Immunology

储存和运输: Store at -20°C. Avoid repeated freezing and thawing



Western blot analysis of HLAC in HeLa, 293T, Jurkat, 3T3, HepG2 lysates using HLA C antibody.