

HKDC1 RABBIT MAB

货号: N263367

产品全名: HKDC1 兔单克隆抗体

基因符号 Hexokinase domain-containing protein 1

UNIPROT ID: Q2TB90

背景: Catalyzes the phosphorylation of hexose to hexose 6-phosphate, although at very low level compared to other hexokinases.

抗原: Recombinant protein of human HKDC1

经过测试的应用: WB,IP

推荐稀释比: WB: 1/500-1/1000 IP: 1/20

种属反应性: Rabbit

克隆性: Rabbit Monoclonal

克隆编号: R06-8I4

分子量: Calculated MW: 103 kDa; Observed MW: 103 kDa

亚型: IgG

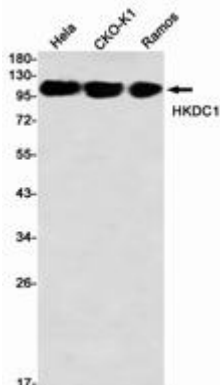
纯化: Affinity Purified

种属反应性: Human

成分: PBS (without Mg²⁺ and Ca²⁺), pH 7.3 containing 50% glycerol, 0.5% BSA and 0.02% sodium azide

研究领域: Signal Transduction

储存和运输: Store at -20°C. Avoid repeated freezing and thawing



Western blot analysis of HKDC1 in Hela, CHO-K1, Ramos lysates using HKDC1 antibody.