

HINT3 RABBIT PAB

货号: S219848

产品全名: HINT3 兔多抗

基因符号: HINT4

UNIPROT ID: Q9NQE9 (Gene Accession - NP_612638)

背景: Histidine triad proteins, such as HINT3, are nucleotide hydrolases and transferases that act on the alpha-phosphate of ribonucleotides.

抗原: Synthetic peptide of human HINT3

经过测试的应用: ELISA, WB, IHC

推荐稀释比: IHC: 50-200;WB: 500-2000;ELISA: 5000-10000

种属反应性: Rabbit

克隆性: Rabbit Polyclonal

亚型: Immunogen-specific rabbit IgG

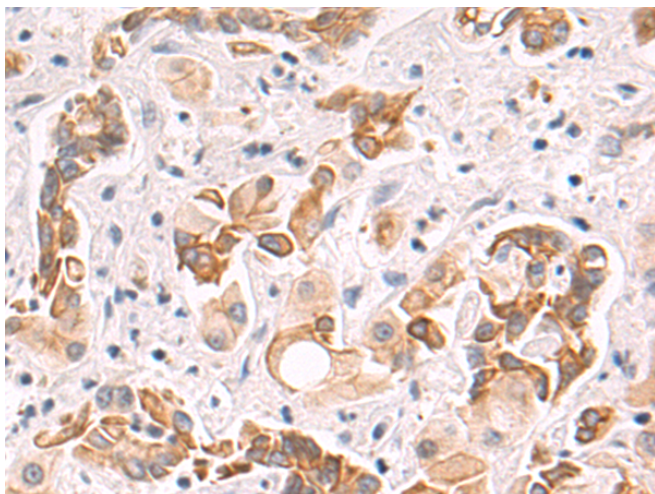
纯化: Antigen affinity purification

种属反应性: Human

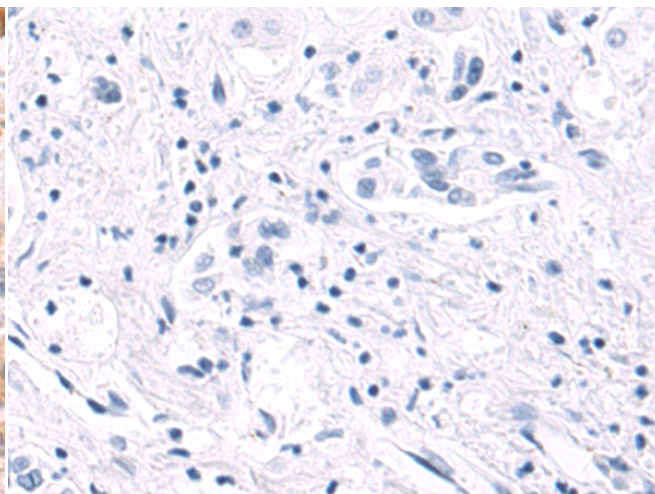
成分: PBS (without Mg²⁺ and Ca²⁺), pH 7.4, 150 mM NaCl, 0.05% Sodium Azide and 40% glycerol

研究领域: Epigenetics and Nuclear Signaling

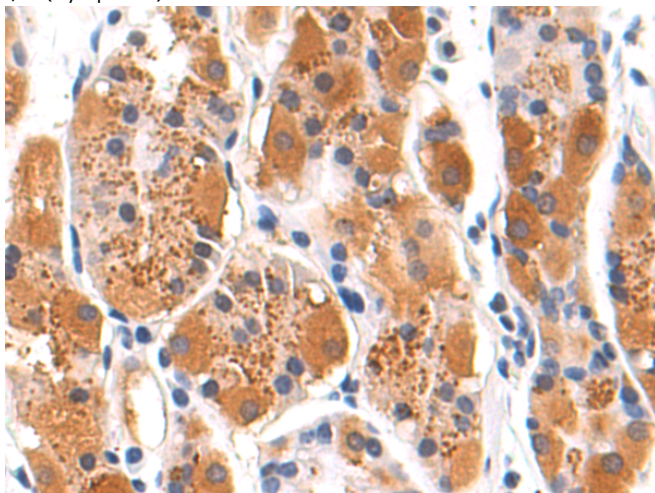
储存和运输: Store at -20°C. Avoid repeated freezing and thawing



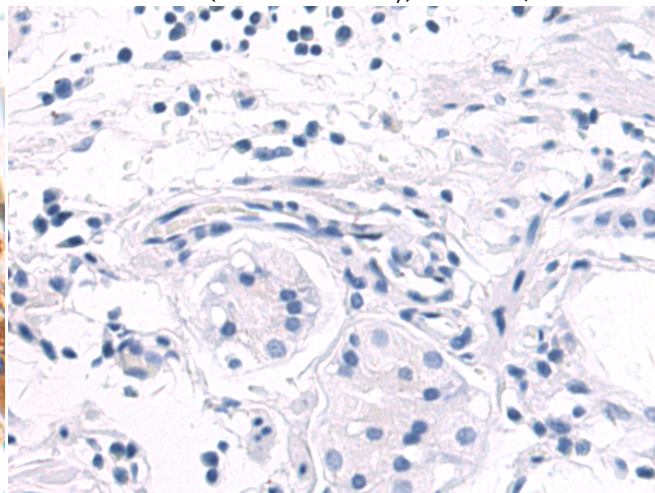
Immunohistochemistry analysis of paraffin embedded Human liver cancer tissue using 219848(HINT3 Antibody) at a dilution of 1/60(Cytoplasm).



In comparison with the IHC on the left, the same paraffin-embedded Human liver cancer tissue is first treated with the synthetic peptide and then with 219848(Anti-HINT3 Antibody) at dilution 1/60.

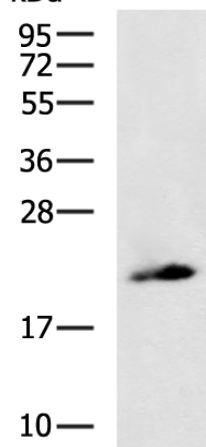


The image on the left is immunohistochemistry of paraffin-embedded Human gastric cancer tissue using 219848(Anti-HINT3 Antibody) at a dilution of 1/60.



In comparison with the IHC on the left, the same paraffin-embedded Human gastric cancer tissue is first treated with synthetic peptide and then with D260478(Anti-HINT3 Antibody) at dilution 1/60.

kDa



Gel: 12%SDS-PAGE, Lysate: 40 µg;
Lane: HepG2 cell lysate;
Primary antibody: 219848(HINT3 Antibody) at dilution 1/1000;
Secondary antibody: HRP-conjugated Goat anti rabbit IgG at 1/5000 dilution;
Exposure time: 90 seconds



Product Description

Pioneering GTPase and Oncogene Product Development since 2010
