

## HINT1 RABBIT MAB

货号: N263363

产品全名: HINT1 兔单克隆抗体

基因符号 HINT1; HINT; PKCII; PRKCNH1; Histidine triad nucleotide-binding protein 1; Adenosine 5'-monophosphoramidase; Protein kinase C inhibitor 1; Protein kinase C-interacting protein 1; PKCI-1

**UNIPROT ID:** P49773

背景: Exhibits adenosine 5'-monophosphoramidase activity, hydrolyzing purine nucleotide phosphoramidates with a single phosphate group such as adenosine 5'monophosphoramidate (AMP-NH<sub>2</sub>) to yield AMP and NH<sub>2</sub>.

抗原: A synthetic peptide of human HINT1

经过测试的应用: WB, ICC/IF, IP

推荐稀释比: WB: 1/500-1/1000 IF: 1/50-1/200 IP: 1/20

种属反应性: Rabbit

克隆性: Rabbit Monoclonal

克隆编号: R08-0E8

分子量: Calculated MW: 14 kDa; Observed MW: 14 kDa

亚型: IgG

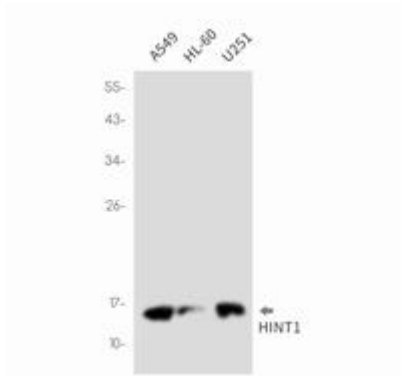
纯化: Affinity Purified

种属反应性: Human

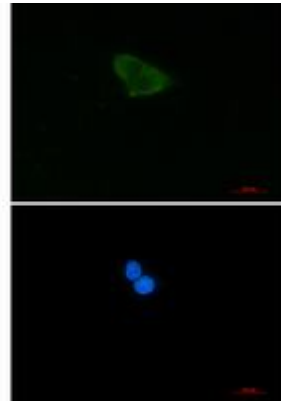
成分: PBS (without Mg<sup>2+</sup> and Ca<sup>2+</sup>), pH 7.3 containing 50% glycerol, 0.5% BSA and 0.02% sodium azide

研究领域: Epigenetics and Nuclear Signaling

储存和运输: Store at -20°C. Avoid repeated freezing and thawing



Western blot analysis of HINT1 in A549, HL-60, U251 lysates using HINT1 antibody.



Immunocytochemistry analysis of HINT1 (green) in Hela using HINT1 antibody, and DAPI (blue).