

## HIC2 RABBIT PAB

货号: S215950

产品全名: HIC2 兔多抗

基因符号: HRG22; ZBTB30; ZNF907

**UNIPROT ID:** Q96JB3 (Gene Accession - NP\_055909)

背景: Transcriptional repressor.

抗原: Synthetic peptide of human HIC2

经过测试的应用: ELISA, IHC

推荐稀释比: IHC: 50-200; ELISA: 5000-10000

种属反应性: Rabbit

克隆性: Rabbit Polyclonal

亚型: Immunogen-specific rabbit IgG

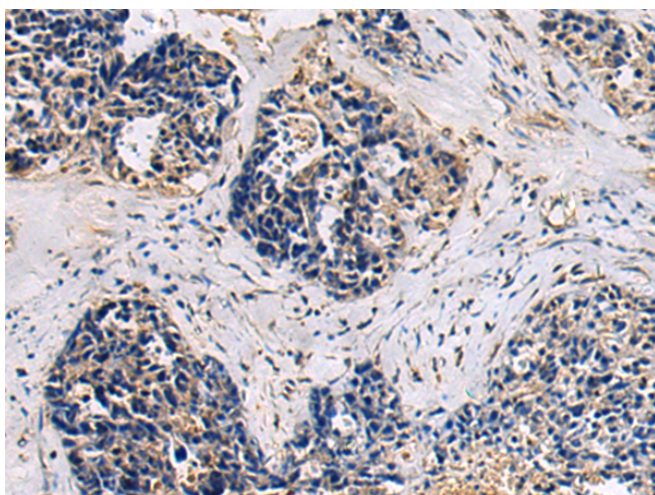
纯化: Antigen affinity purification

种属反应性: Human, Mouse

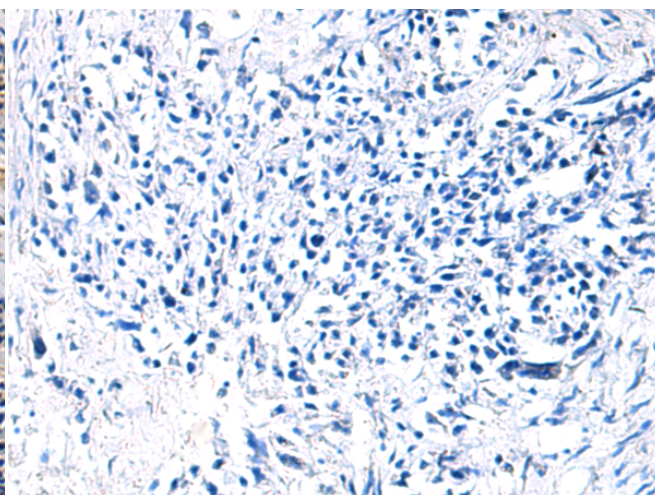
成分: PBS (without Mg<sup>2+</sup> and Ca<sup>2+</sup>), pH 7.4, 150 mM NaCl, 0.05% Sodium Azide and 40% glycerol

研究领域: Epigenetics and Nuclear Signaling

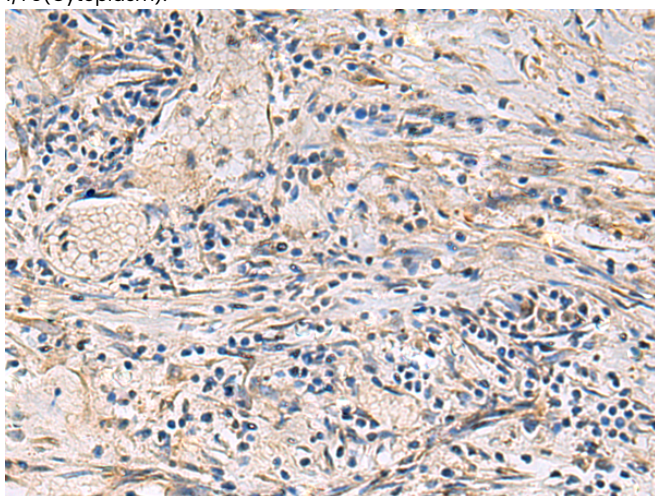
储存和运输: Store at -20°C. Avoid repeated freezing and thawing



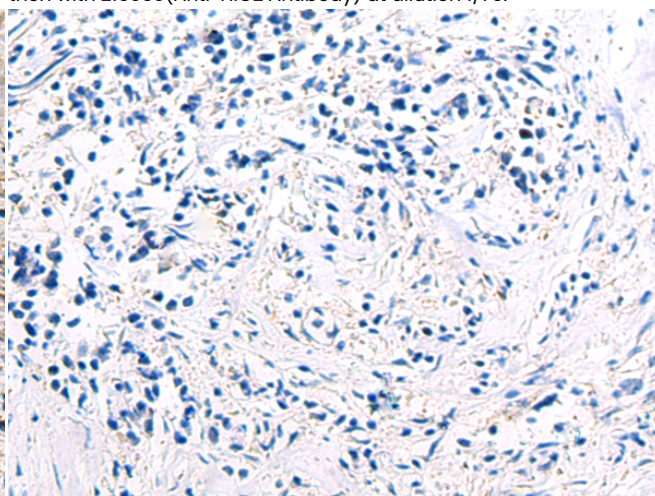
Immunohistochemistry analysis of paraffin embedded Human ovarian cancer using 215950(HIC2 Antibody) at a dilution of 1/75(Cytoplasm).



In comparison with the IHC on the left, the same paraffin-embedded Human ovarian cancer is first treated with the synthetic peptide and then with 215950(Anti-HIC2 Antibody) at dilution 1/75.



The image on the left is immunohistochemistry of paraffin-embedded Human breast cancer using 215950(Anti-HIC2 Antibody) at a dilution of 1/75.



In comparison with the IHC on the left, the same paraffin-embedded Human breast cancer is first treated with synthetic peptide and then with D164178(Anti-HIC2 Antibody) at dilution 1/75.



# Product Description

Pioneering GTPase and Oncogene Product Development since 2010

---