

## HIC1 RABBIT PAB

货号: S222178

产品全名: HIC1 兔多抗

基因符号: hic-1; ZBTB29; ZNF901

**UNIPROT ID:** Q14526 (Gene Accession - NP\_001091672)

**背景:** This gene functions as a growth regulatory and tumor repressor gene. Hypermethylation or deletion of the region of this gene have been associated with tumors and the contiguous-gene syndrome, Miller-Dieker syndrome. Alternative splicing of this gene results in multiple transcript variants.

**抗原:** Synthetic peptide of human HIC1

**经过测试的应用:** ELISA, IHC

**推荐稀释比:** IHC: 50-100; ELISA: 5000-10000

**种属反应性:** Rabbit

**克隆性:** Rabbit Polyclonal

**亚型:** Immunogen-specific rabbit IgG

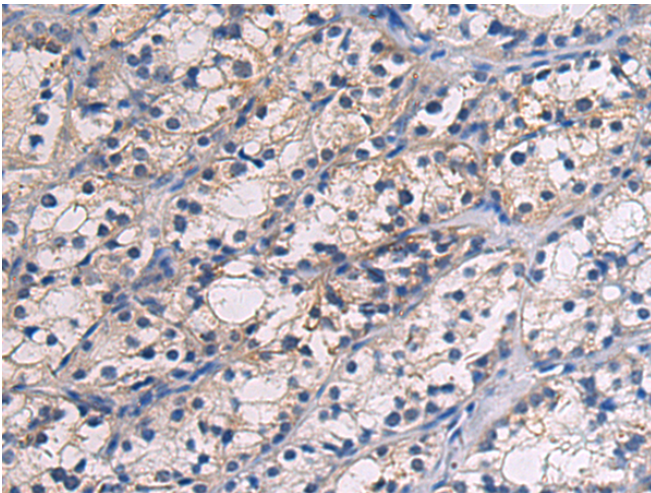
**纯化:** Antigen affinity purification

**种属反应性:** Human, Mouse

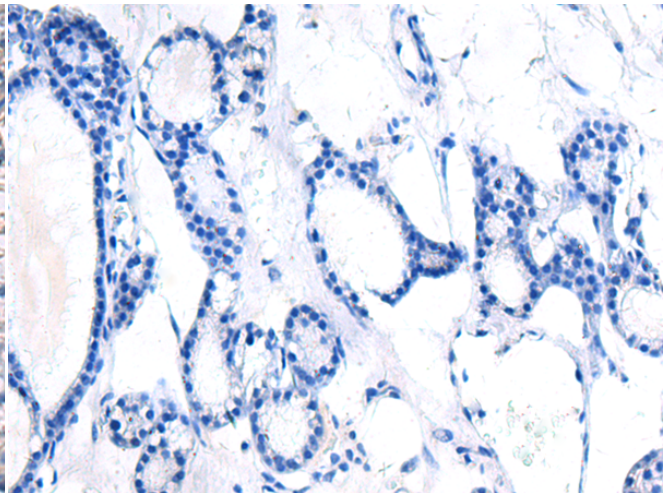
**成分:** PBS (without Mg<sup>2+</sup> and Ca<sup>2+</sup>), pH 7.4, 150 mM NaCl, 0.05% Sodium Azide and 40% glycerol

**研究领域:** Epigenetics and Nuclear Signaling

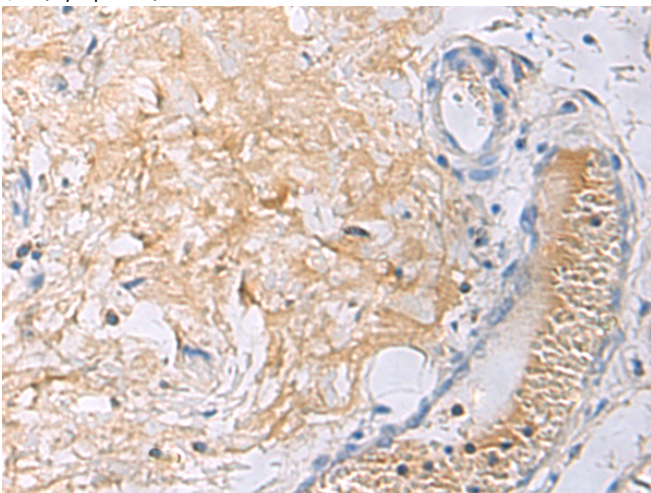
**储存和运输:** Store at -20°C. Avoid repeated freezing and thawing



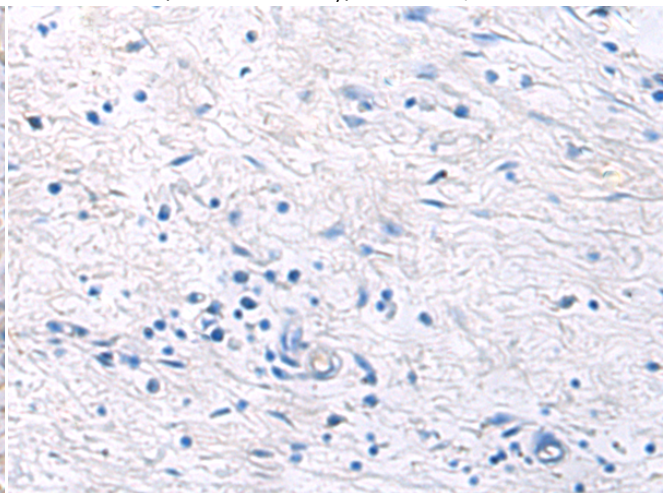
Immunohistochemistry analysis of paraffin embedded Human thyroid cancer using 222178(HIC1 Antibody) at a dilution of 1/55(Cytoplasm).



In comparison with the IHC on the left, the same paraffin-embedded Human thyroid cancer is first treated with the synthetic peptide and then with 222178(Anti-HIC1 Antibody) at dilution 1/55.



The image on the left is immunohistochemistry of paraffin-embedded Human gastric cancer using 222178(Anti-HIC1 Antibody) at a dilution of 1/55.



In comparison with the IHC on the left, the same paraffin-embedded Human gastric cancer is first treated with synthetic peptide and then with D264177(Anti-HIC1 Antibody) at dilution 1/55.



# Product Description

Pioneering GTPase and Oncogene Product Development since 2010

---