

HECTD2 RABBIT PAB

货号: S222173

产品全名: HECTD2 兔多抗

基因符号

UNIPROT ID: Q5U5R9 (Gene Accession - NP_877497)

背景: Probable E3 ubiquitin-protein ligase which accepts ubiquitin from an E2 ubiquitin-conjugating enzyme in the form of a thioester and then directly transfers the ubiquitin to targeted substrates.

抗原: Synthetic peptide of human HECTD2

经过测试的应用: ELISA, IHC

推荐稀释比: IHC: 50-100; ELISA: 5000-10000

种属反应性: Rabbit

克隆性: Rabbit Polyclonal

亚型: Immunogen-specific rabbit IgG

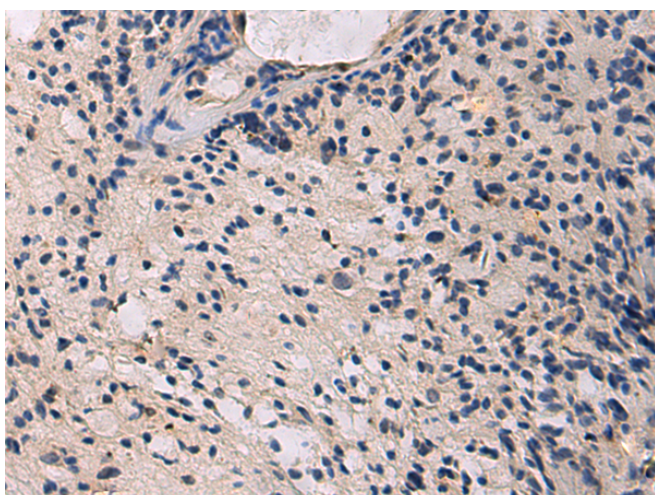
纯化: Antigen affinity purification

种属反应性: Human, Mouse

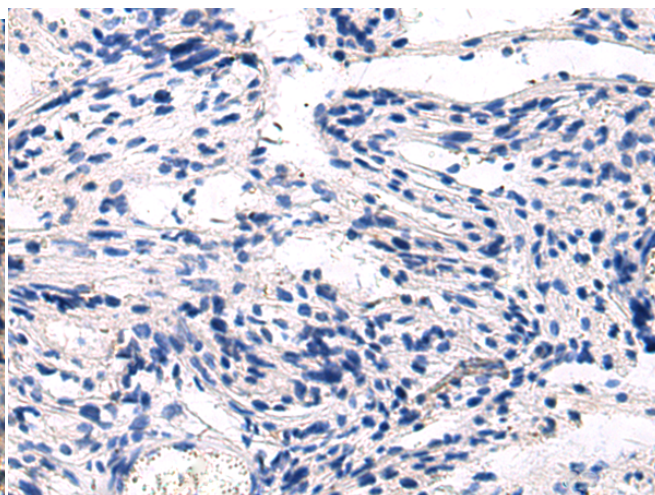
成分: PBS (without Mg²⁺ and Ca²⁺), pH 7.4, 150 mM NaCl, 0.05% Sodium Azide and 40% glycerol

研究领域: Cell Biology

储存和运输: Store at -20°C. Avoid repeated freezing and thawing



Immunohistochemistry analysis of paraffin embedded Human brain using 222173 (HECTD2 Antibody) at a dilution of 1/50 (Cytoplasm).



In comparison with the IHC on the left, the same paraffin-embedded Human brain is first treated with the synthetic peptide and then with 222173 (Anti-HECTD2 Antibody) at dilution 1/50.