

HECA RABBIT PAB

货号: S222171

产品全名: HECA 兔多抗

基因符号: HDC; HDCL; HHDC; dJ225E12.1

UNIPROT ID: Q9UBI9 (Gene Accession - NP_057301)

背景: This gene encodes the homolog of the Drosophila headcase protein, a highly basic, cytoplasmic protein that regulates the re-entry of imaginal cells into the mitotic cycle during adult morphogenesis. In Drosophila, the encoded protein also inhibits terminal branching of neighboring cells during tracheal development.

抗原: Synthetic peptide of human HECA

经过测试的应用: ELISA, IHC

推荐稀释比: IHC: 20-100; ELISA: 5000-10000

种属反应性: Rabbit

克隆性: Rabbit Polyclonal

亚型: Immunogen-specific rabbit IgG

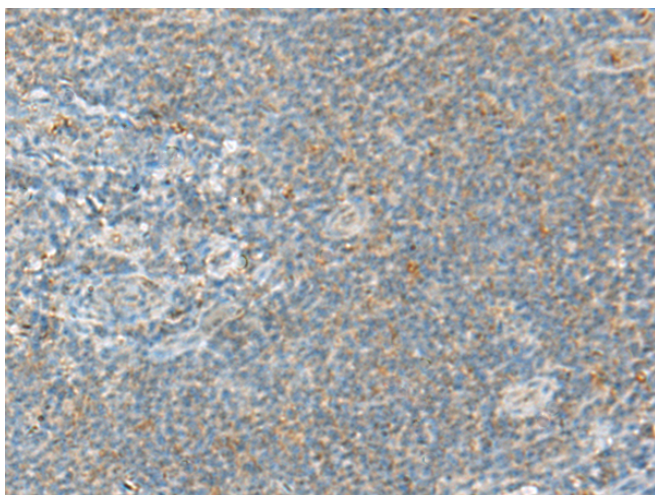
纯化: Antigen affinity purification

种属反应性: Human

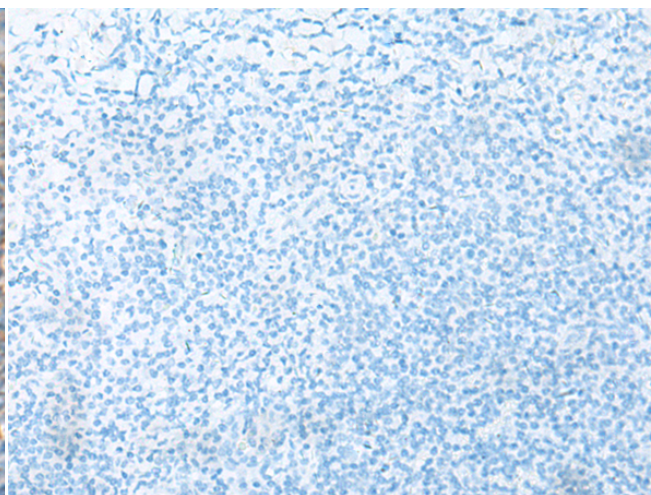
成分: PBS (without Mg²⁺ and Ca²⁺), pH 7.4, 150 mM NaCl, 0.05% Sodium Azide and 40% glycerol

研究领域: Cancer

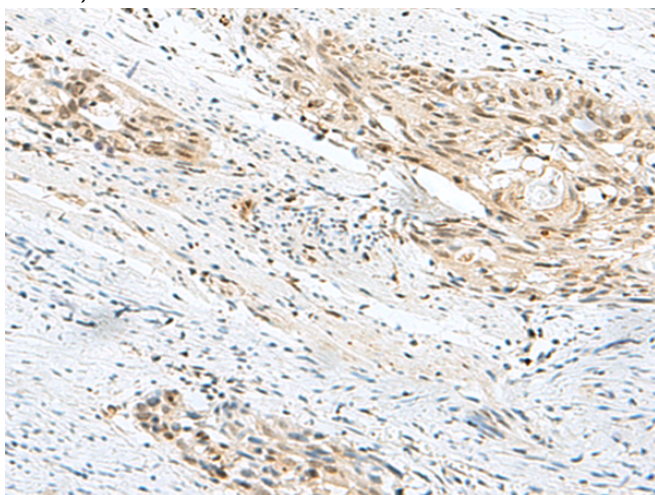
储存和运输: Store at -20°C. Avoid repeated freezing and thawing



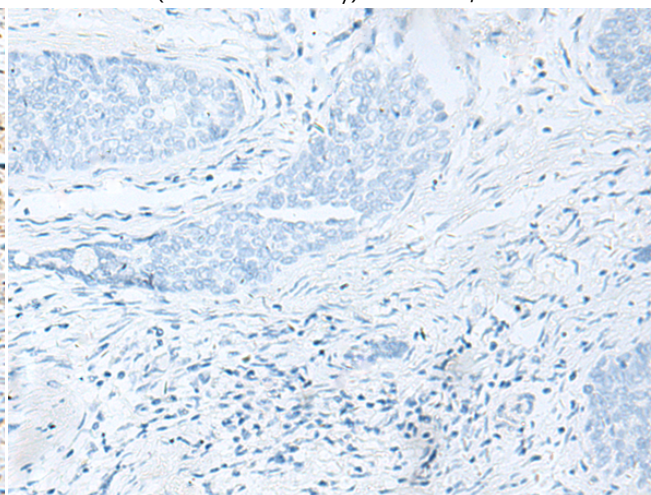
Immunohistochemistry analysis of paraffin embedded Human tonsil tissue using 222171(HECA Antibody) at a dilution of 1/20(Cytoplasm or Nucleus).



In comparison with the IHC on the left, the same paraffin-embedded Human tonsil tissue is first treated with the synthetic peptide and then with 222171(Anti-HECA Antibody) at dilution 1/20.



The image on the left is immunohistochemistry of paraffin-embedded Human esophagus cancer tissue using 222171(Anti-HECA Antibody) at a dilution of 1/20.



In comparison with the IHC on the left, the same paraffin-embedded Human esophagus cancer tissue is first treated with synthetic peptide and then with D264166(Anti-HECA Antibody) at dilution 1/20.



Product Description

Pioneering GTPase and Oncogene Product Development since 2010
