

HEBP2 RABBIT PAB

货号: S219012

产品全名: HEBP2 兔多抗

基因符号 PP23; SOUL; C6orf34; C6ORF34B

UNIPROT ID: Q9Y5Z4 (Gene Accession - BC008205)

背景: The protein encoded by this gene is found predominately in the cytoplasm, where it plays a role in the collapse of mitochondrial membrane potential (MMP) prior to necrotic cell death. The encoded protein enhances outer and inner mitochondrial membrane permeabilization, especially under conditions of oxidative stress.

抗原: Fusion protein of human HEBP2

经过测试的应用: ELISA, IHC

推荐稀释比: IHC: 50-300; ELISA: 5000-10000

种属反应性: Rabbit

克隆性: Rabbit Polyclonal

亚型: Immunogen-specific rabbit IgG

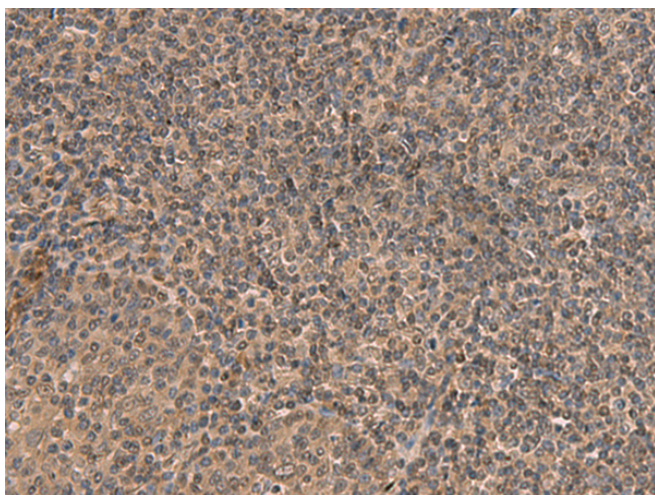
纯化: Antigen affinity purification

种属反应性: Human, Mouse

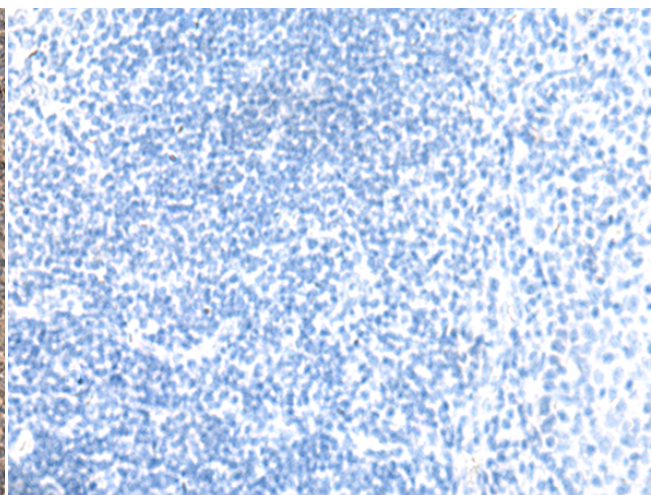
成分: PBS (without Mg²⁺ and Ca²⁺), pH 7.4, 150 mM NaCl, 0.05% Sodium Azide and 40% glycerol

研究领域: Cell Biology

储存和运输: Store at -20°C. Avoid repeated freezing and thawing



Immunohistochemistry analysis of paraffin embedded Human tonsil tissue using 219012(HEBP2 Antibody) at a dilution of 1/70(Cytoplasm and Nucleus).



In comparison with the IHC on the left, the same paraffin-embedded Human tonsil tissue is first treated with the fusion protein and then with 219012(Anti-HEBP2 Antibody) at dilution 1/70.