

## HDHD2 RABBIT PAB

货号: S218221

产品全名: HDHD2 兔多抗

基因符号: HEL-S-301; 3110052N05Rik

**UNIPROT ID:** Q9H0R4 (Gene Accession - BC038100)

背景: HDHD2 (haloacid dehalogenase-like hydrolase domain containing 2) is also known as DKFZp564D1378 and is a 259 amino acid protein that is expressed as two isoforms produced by alternative splicing. HDHD2 belongs to the HAD-like hydrolase superfamily, which contains a group of hydrolase enzymes

抗原: Full length fusion 蛋白

经过测试的应用: ELISA, WB, IHC

推荐稀释比: IHC: 25-100;WB: 200-1000;ELISA: 5000-10000

种属反应性: Rabbit

克隆性: Rabbit Polyclonal

亚型: Immunogen-specific rabbit IgG

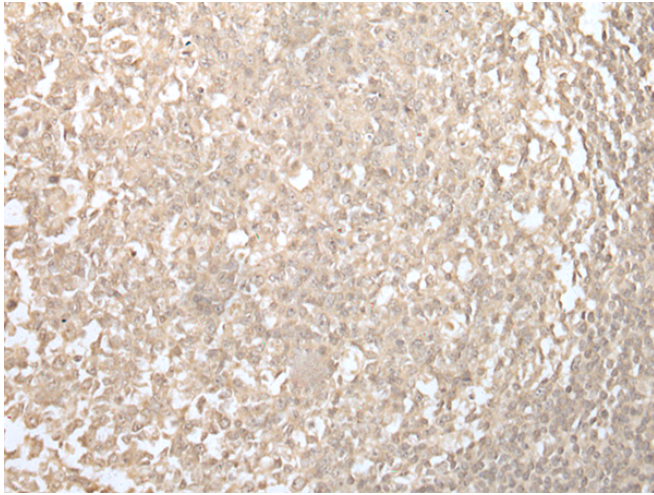
纯化: Antigen affinity purification

种属反应性: Human, Mouse, Rat

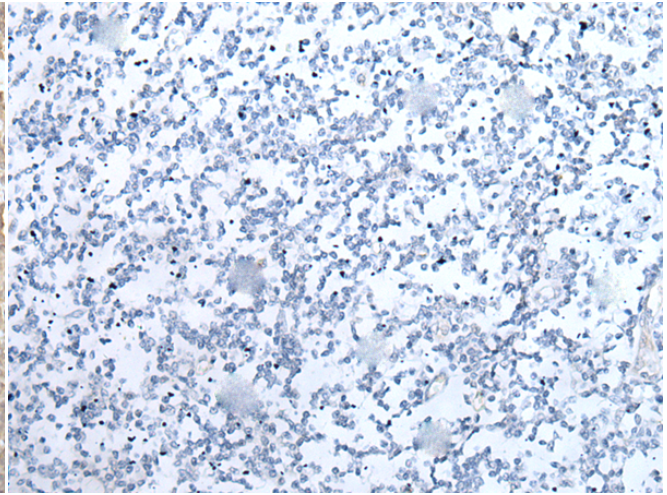
成分: PBS (without Mg<sup>2+</sup> and Ca<sup>2+</sup>), pH 7.4, 150 mM NaCl, 0.05% Sodium Azide and 40% glycerol

研究领域: Cell Biology

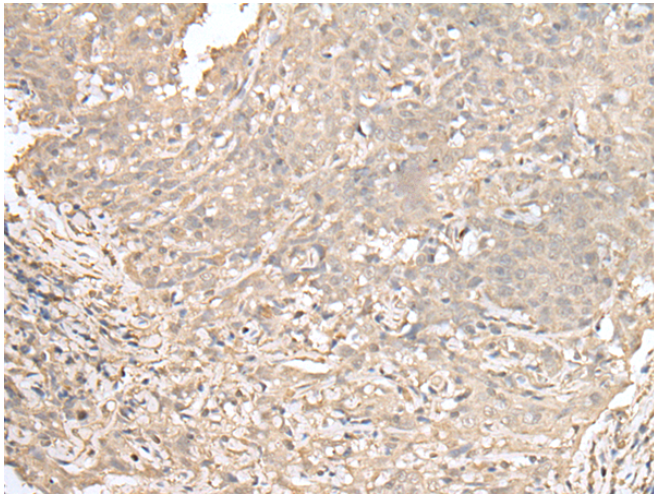
储存和运输: Store at -20°C. Avoid repeated freezing and thawing



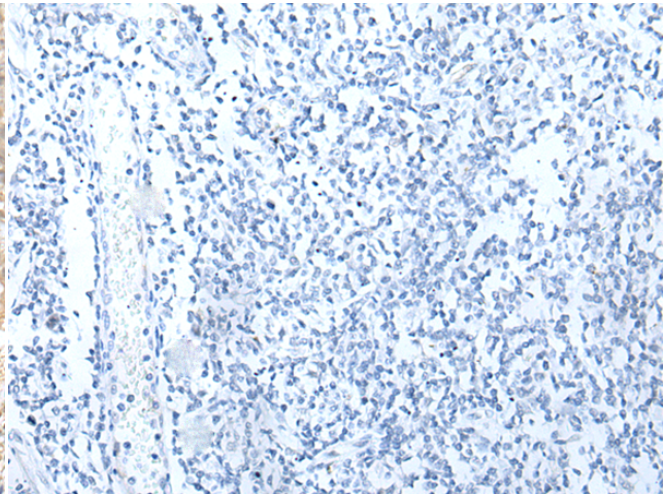
Immunohistochemistry analysis of paraffin embedded Human tonsil tissue using 218221(HDHD2 Antibody) at a dilution of 1/30(Cytoplasm and Nucleus).



In comparison with the IHC on the left, the same paraffin-embedded Human tonsil tissue is first treated with the fusion protein and then with 218221(Anti-HDHD2 Antibody) at dilution 1/30.

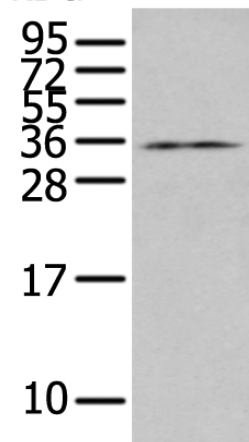


The image on the left is immunohistochemistry of paraffin-embedded Human cervical cancer tissue using 218221(Anti-HDHD2 Antibody) at a dilution of 1/30.



In comparison with the IHC on the left, the same paraffin-embedded Human cervical cancer tissue is first treated with fusion protein and then with D223974(Anti-HDHD2 Antibody) at dilution 1/30.

kDa



Gel: 12%SDS-PAGE, Lysate: 40 µg;  
Lane: HEPG2 cell lysate;  
Primary antibody: 218221(HDHD2 Antibody) at dilution 1/300;  
Secondary antibody: Goat anti rabbit IgG at 1/8000 dilution;  
Exposure time: 20 seconds



# Product Description

Pioneering GTPase and Oncogene Product Development since 2010

---