

## HCE RABBIT MAB

货号: N262315

产品全名: HCE 兔单克隆抗体

基因符号 HCE; HCE1; hCAP; CAPIA

**UNIPROT ID:** O60942

**背景:** Bifunctional mRNA-capping enzyme exhibiting RNA 5'-triphosphatase activity in the N-terminal part and mRNA guanylyltransferase activity in the C-terminal part. Catalyzes the first two steps of cap formation: by removing the gamma-phosphate from the 5'-triphosphate end of nascent mRNA to yield a diphosphate end, and by transferring the gmp moiety of GTP to the 5'-diphosphate terminus.

**抗原:** Recombinant protein of human HCE

**经过测试的应用:** WB,IP

**推荐稀释比:** WB: 1/500-1/1000 IP: 1/20

**种属反应性:** Rabbit

**克隆性:** Rabbit Monoclonal

**克隆编号:** R06-6B2

**分子量:** Calculated MW: 69 kDa; Observed MW: 69 kDa

**亚型:** IgG

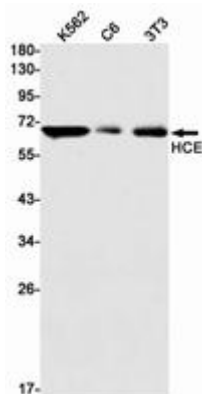
**纯化:** Affinity Purified

**种属反应性:** Human, Mouse and Rat

**成分:** PBS (without Mg<sup>2+</sup> and Ca<sup>2+</sup>), pH 7.3 containing 50% glycerol, 0.5% BSA and 0.02% sodium azide

**研究领域:** Epigenetics and Nuclear Signaling

**储存和运输:** Store at -20°C. Avoid repeated freezing and thawing



Western blot analysis of HCE in K562, C6, 3T3 lysates using HCE antibody.



# Product Description

Pioneering GTPase and Oncogene Product Development since 2010

---