

HCE RABBIT MAB

货号: N263354

产品全名: HCE 兔单克隆抗体

基因符号 HCE; HCE1; hCAP; CAPIA

UNIPROT ID: O60942

背景: Bifunctional mRNA-capping enzyme exhibiting RNA 5'-triphosphatase activity in the N-terminal part and mRNA guanylyltransferase activity in the C-terminal part. Catalyzes the first two steps of cap formation: by removing the gamma-phosphate from the 5'-triphosphate end of nascent mRNA to yield a diphosphate end, and by transferring the gmp moiety of GTP to the 5'-diphosphate terminus.

抗原: Recombinant protein of human HCE

经过测试的应用: WB, ICC/IF, IP

推荐稀释比: WB: 1/500-1/1000 IF: 1/50-1/200 IP: 1/20

种属反应性: Rabbit

克隆性: Rabbit Monoclonal

克隆编号: R06-7D6

分子量: Calculated MW: 69 kDa; Observed MW: 69 kDa

亚型: IgG

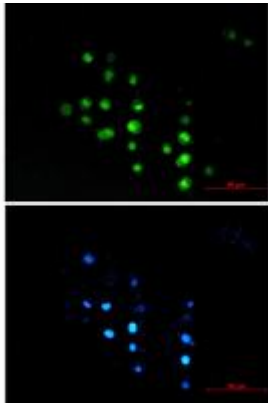
纯化: Affinity Purified

种属反应性: Human, Rat

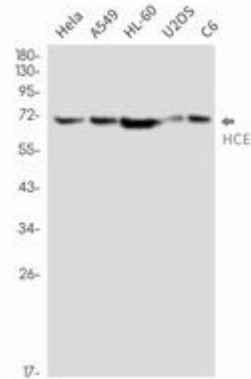
成分: PBS (without Mg²⁺ and Ca²⁺), pH 7.3 containing 50% glycerol, 0.5% BSA and 0.02% sodium azide

研究领域: Epigenetics and Nuclear Signaling

储存和运输: Store at -20°C. Avoid repeated freezing and thawing



Immunocytochemistry analysis of HCE (green) in MCF-7 using HCE antibody, and DAPI (blue)



Western blot analysis of HCE in HeLa, A549, HL-60, U2OS, C6 lysates using HCE antibody.