

## HCCS RABBIT PAB

货号: S219039

产品全名: HCCS 兔多抗

基因符号: MLS; CCHL; MCOPS7; LSDMCA1

**UNIPROT ID:** P53701 (Gene Accession - BC001691)

**背景:** The protein encoded by this gene is an enzyme that covalently links a heme group to the apoprotein of cytochrome c. Defects in this gene are a cause of microphthalmia syndromic type 7 (MCOPS7). Three transcript variants encoding the same protein have been found for this gene.

**抗原:** Fusion protein of human HCCS

**经过测试的应用:** ELISA, WB, IHC

**推荐稀释比:** IHC: 50-300;WB: 5000-10000;ELISA: 5000-10000

**种属反应性:** Rabbit

**克隆性:** Rabbit Polyclonal

**亚型:** Immunogen-specific rabbit IgG

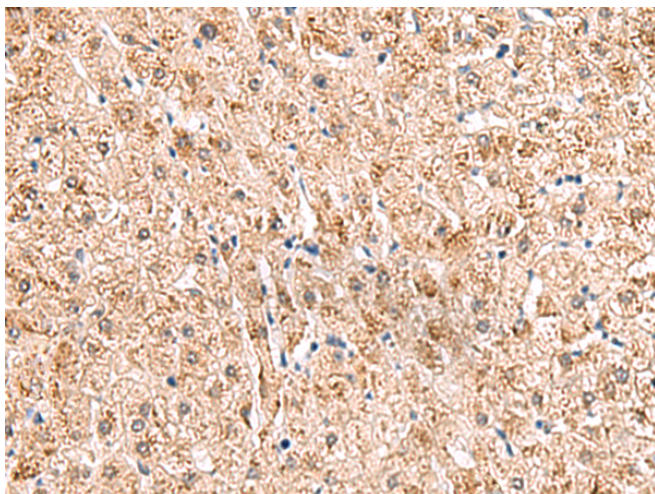
**纯化:** Antigen affinity purification

**种属反应性:** Human, Mouse

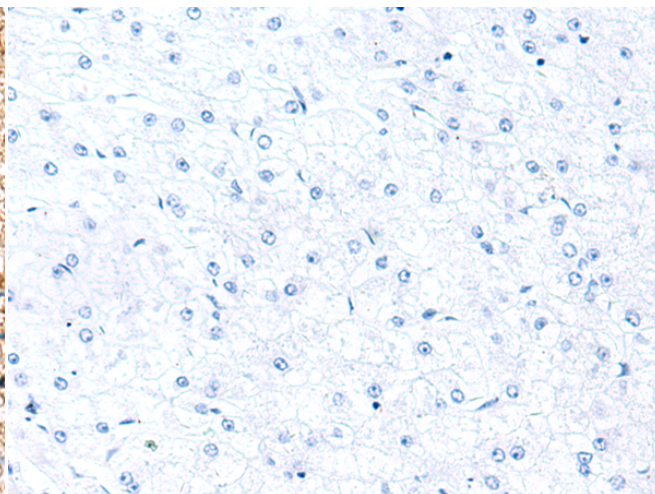
**成分:** PBS (without Mg<sup>2+</sup> and Ca<sup>2+</sup>), pH 7.4, 150 mM NaCl, 0.05% Sodium Azide and 40% glycerol

**研究领域:** Metabolism, Cardiovascular

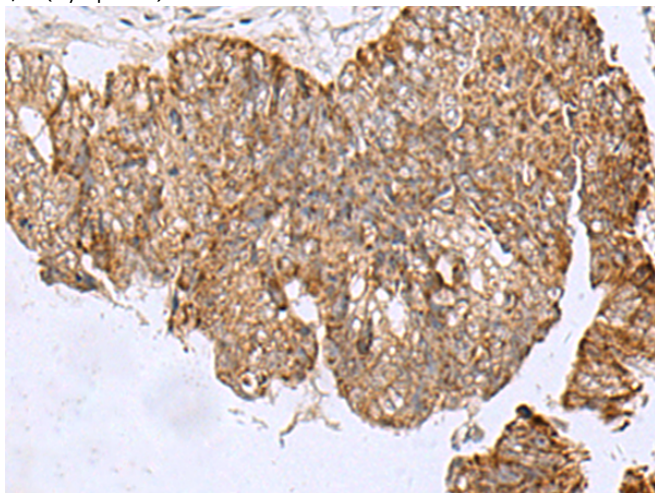
**储存和运输:** Store at -20°C. Avoid repeated freezing and thawing



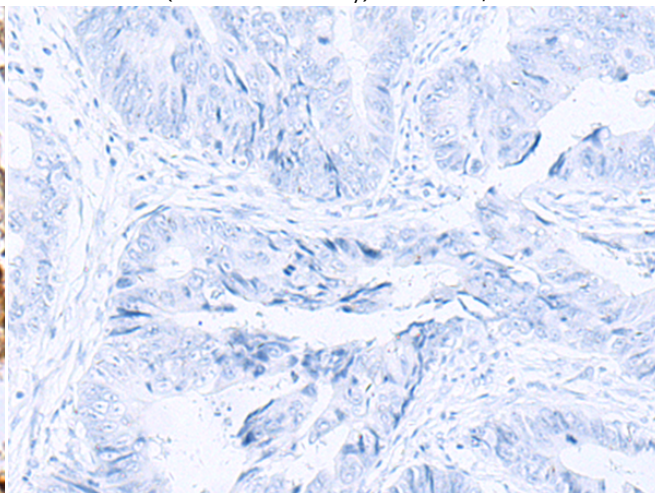
Immunohistochemistry analysis of paraffin embedded Human liver cancer tissue using 219039(HCCS Antibody) at a dilution of 1/110(Cytoplasm).



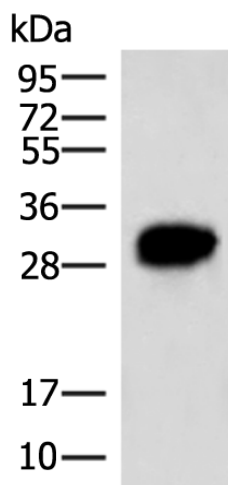
In comparison with the IHC on the left, the same paraffin-embedded Human liver cancer tissue is first treated with the fusion protein and then with 219039(Anti-HCCS Antibody) at dilution 1/110.



The image on the left is immunohistochemistry of paraffin-embedded Human colorectal cancer tissue using 219039(Anti-HCCS Antibody) at a dilution of 1/110.



In comparison with the IHC on the left, the same paraffin-embedded Human colorectal cancer tissue is first treated with fusion protein and then with D225696(Anti-HCCS Antibody) at dilution 1/110.



Gel: 8%SDS-PAGE, Lysate: 40 µg;  
Lane: HepG2 cell lysate;  
Primary antibody: 219039(HCCS Antibody) at dilution 1/4000;  
Secondary antibody: HRP-conjugated Goat anti rabbit IgG at 1/5000 dilution;  
Exposure time: 1 second



# Product Description

Pioneering GTPase and Oncogene Product Development since 2010

---