

HBZ RABBIT PAB

货号: S219206

产品全名: HBZ 兔多抗

基因符号: HBZ1; HBZ-T1

UNIPROT ID: P02008 (Gene Accession - BC027892)

背景: Zeta-globin is an alpha-like hemoglobin. The zeta-globin polypeptide is synthesized in the yolk sac of the early embryo, while alpha-globin is produced throughout fetal and adult life. The zeta-globin gene is a member of the human alpha-globin gene cluster that includes five functional genes and two pseudogenes. The order of genes is: 5' - zeta - pseudozeta - mu - pseudoalpha-1 - alpha-2 - alpha-1 - theta1 - 3'.

抗原: Fusion protein of human HBZ

经过测试的应用: ELISA, WB, IHC

推荐稀释比: IHC: 100-300;WB: 500-2000;ELISA: 5000-10000

种属反应性: Rabbit

克隆性: Rabbit Polyclonal

亚型: Immunogen-specific rabbit IgG

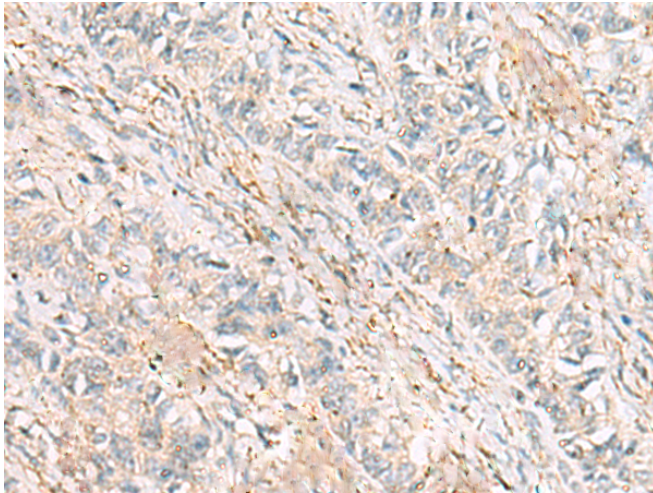
纯化: Antigen affinity purification

种属反应性: Human

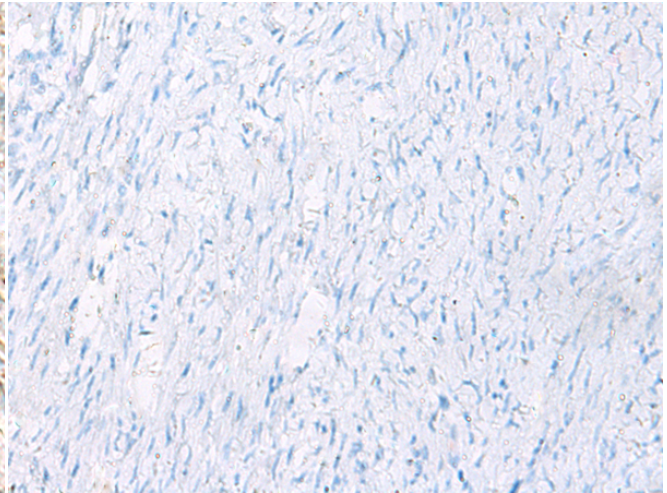
成分: PBS (without Mg²⁺ and Ca²⁺), pH 7.4, 150 mM NaCl, 0.05% Sodium Azide and 40% glycerol

研究领域: Cardiovascular

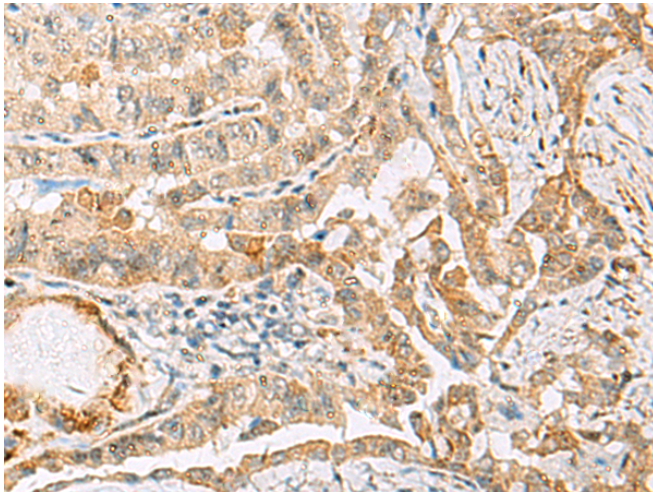
储存和运输: Store at -20°C. Avoid repeated freezing and thawing



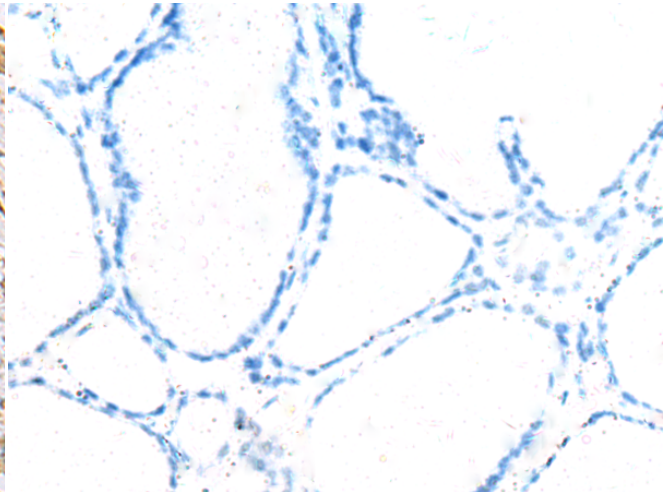
Immunohistochemistry analysis of paraffin embedded Human ovarian cancer tissue using 219206(HBZ Antibody) at a dilution of 1/120(Cytoplasm).



In comparison with the IHC on the left, the same paraffin-embedded Human ovarian cancer tissue is first treated with the fusion protein and then with 219206(Anti-HBZ Antibody) at dilution 1/120.



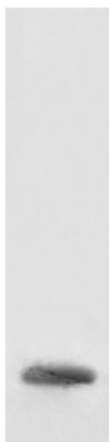
The image on the left is immunohistochemistry of paraffin-embedded Human thyroid cancer tissue using 219206(Anti-HBZ Antibody) at a dilution of 1/120.



In comparison with the IHC on the left, the same paraffin-embedded Human thyroid cancer tissue is first treated with fusion protein and then with D226050(Anti-HBZ Antibody) at dilution 1/120.

kDa

72—
55—
36—
28—
17—
10—



Gel: 12%SDS-PAGE, Lysate: 40 µg;
Lane: K562 cell lysate;
Primary antibody: 219206(HBZ Antibody) at dilution 1/1600;
Secondary antibody: HRP-conjugated Goat anti rabbit IgG at 1/5000 dilution;
Exposure time: 10 seconds



Product Description

Pioneering GTPase and Oncogene Product Development since 2010
