

HBB RABBIT PAB

货号: S222113

产品全名: HBB 兔多抗

基因符号: CD113t-C; beta-globin

UNIPROT ID: P68871 (Gene Accession - NP_000509)

背景: The alpha (HBA) and beta (HBB) loci determine the structure of the 2 types of polypeptide chains in adult hemoglobin, Hb A. The normal adult hemoglobin tetramer consists of two alpha chains and two beta chains. Mutant beta globin causes sickle cell anemia. Absence of beta chain causes beta-zero-thalassemia. Reduced amounts of detectable beta globin causes beta-plus-thalassemia. The order of the genes in the beta-globin cluster is 5'-epsilon -- gamma-G -- gamma-A -- delta -- beta--3'.

抗原: Synthetic peptide of human HBB

经过测试的应用: ELISA, WB, IHC

推荐稀释比: IHC: Oct-50;WB: 200-1000;ELISA: 5000-10000

种属反应性: Rabbit

克隆性: Rabbit Polyclonal

亚型: Immunogen-specific rabbit IgG

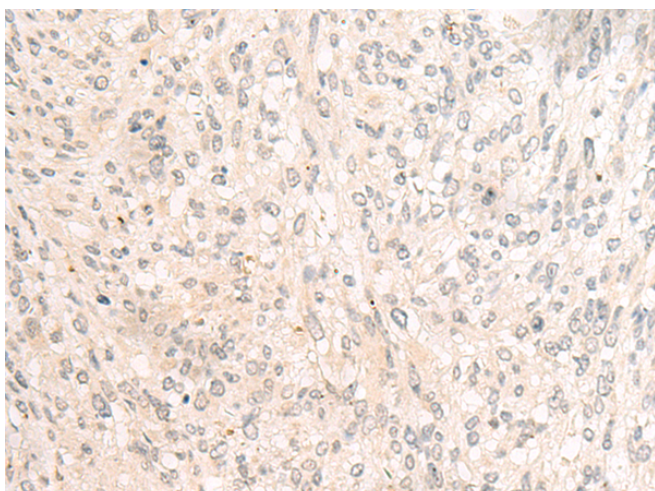
纯化: Antigen affinity purification

种属反应性: Human, Mouse, Rat

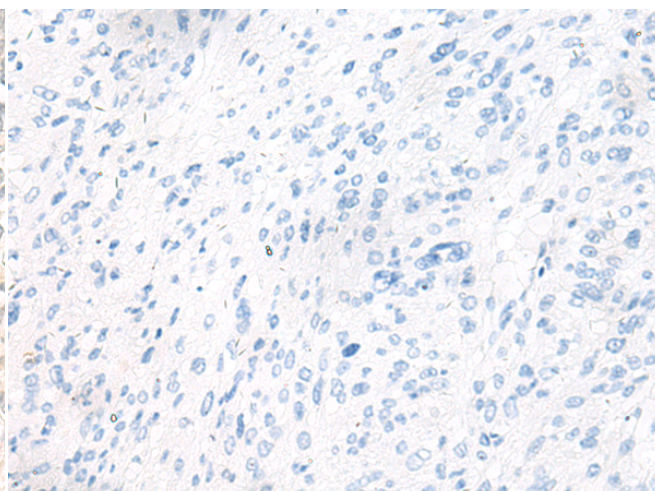
成分: PBS (without Mg²⁺ and Ca²⁺), pH 7.4, 150 mM NaCl, 0.05% Sodium Azide and 40% glycerol

研究领域: Cardiovascular

储存和运输: Store at -20°C. Avoid repeated freezing and thawing

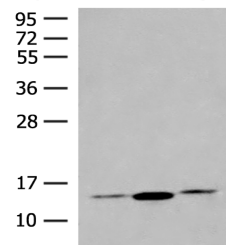


Immunohistochemistry analysis of paraffin embedded Human liver cancer tissue using 222113(HBB Antibody) at a dilution of 1/20(Cytoplasm).



In comparison with the IHC on the left, the same paraffin-embedded Human liver cancer tissue is first treated with the synthetic peptide and then with 222113(Anti-HBB Antibody) at dilution 1/20.

kDa 1 2 3



Gel: 12%SDS-PAGE, Lysate: 40 µg;

Lane 1-3: Mouse liver tissue, Human heart tissue and Human plasma solution lysates;

Primary antibody: 222113(HBB Antibody) at dilution 1/200;

Secondary antibody: Goat anti rabbit IgG at 1/8000 dilution;

Exposure time: 1 minute